



USB CONNECTOR Type A USB CONNECTOR Type B
Mini USB CONNECTOR Micro USB CONNECTOR
USB 3.0 CONNECTOR USB CONNECTOR Type C



WWW.KLSELE.COM
Email:sales@cnkls.com
Email:sales@klsele.com
Tel:0086-574-86828566

KLS ELECTRONIC CO; LTD

Your Best Electronic Components Sourcing!

KLS Electronic Co., Ltd. was founded in 2002.

KLS is a comprehensive trade enterprise with import and export of electronic products in China. The main business line of the company include importing and exporting of electronic, elements and products, processing with supplied materials, samples and blueprints, sales & purchase agents, Searching for customer non-standard goods amongst vast products data sheet.

KLS has been adhering to the principle of serving the customers with high-quality electronics products, which 80% of products have UL, CSA, VDE, CE and ROHS certificate. By strengthening the operation and management and placing equal emphasis on marketing process, our assistant of good service, KLS has gained customers from USA, RUSSIA, UK, BRAZIL, SWEDEN ETC.....

KLS memo is "Meet customers need with best price and best quality!" Each year we attended four to five Electronic exhibitions all over the world for introduce. You are searching for creditable and professional supplier to work with; we are also looking for sincerely and long-term customers. Once we find each other, we could make rapid progress together!

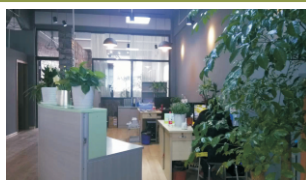
Since from 2015 KLS invested the production line of Ethernet connectors and LED connectors. In 2017, KLS invested SMT assembly production line and started to provide EMS service



**G/M-
LiPing Xiong**

■ HISTORY OF KLS

- 2002: KLS was established
- 2003: KLS enter Russia market first time
- 2004: KLS attend Muhich exhibition, enter Europe market
- 2005: KLS built purchase department
- 2006: Wireless products OEM project
- 2007: Power meter project OEM
- 2008: Built logistic department
- 2009: Start cable assembly department
- 2010: ISO9001:2008
- 2011: KLS new website
- 2012: Ten years of celebration
- 2013: Move to new office with warehouse
- 2014: ERP management system
- 2015: Production line Ethernet Connector
- 2015: Auto-Production line of LED Lighting Connector
- 2017: SMT assembly production line / EMS



KLS ELECTRONIC CO.,LTD.



www.cnkls.com
www.klsele.com

Tel: +86-0574-86828566
Fax: +86-0574-86824882

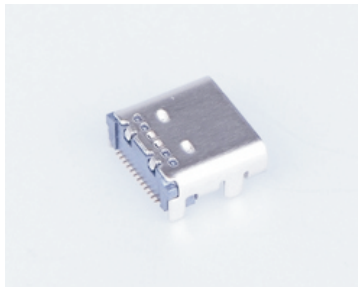


Add: NO.8-1 Rongxia Rd, Xiapu Shanqian Industrial Area Beilun Ningbo Zhejiang, China
Postal: 315807 315800

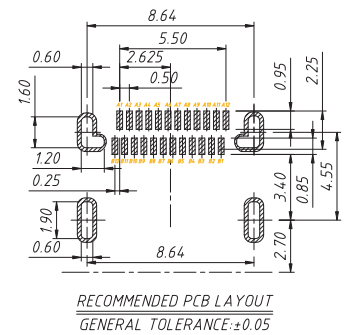
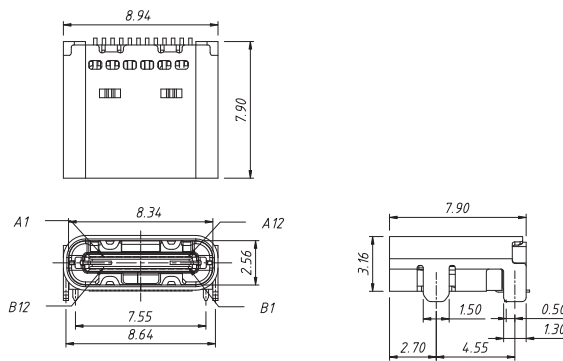
CONTENTS

USB TYPE CF	8
USB 3.0 AF	16
USB 2.0 AF CONN	27
USB 2.0 AM	30
USB 2.0 BF	32
Mini USB BF&Mini USB BM&Mini USB AB/F	36
Micro USB BF	41
Micro USB BM	44
Micro USB 3.0 Male	45

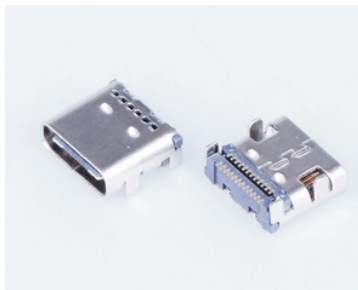
CONN RCPT USB Type C Female, 24P SMD R/A



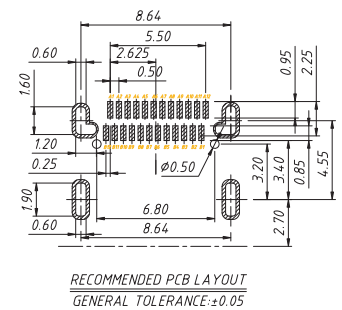
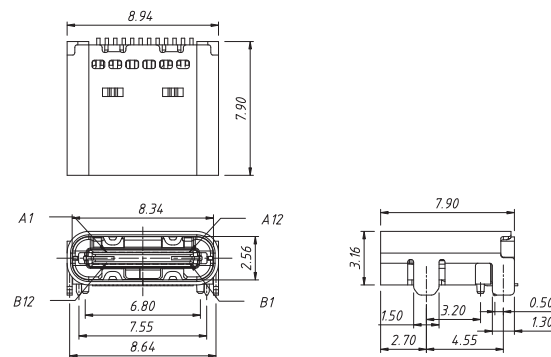
KLS1-5405



CONN RCPT USB Type C Female, 24P SMD with POSE



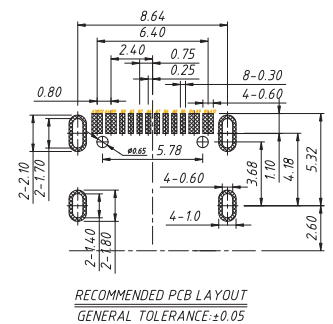
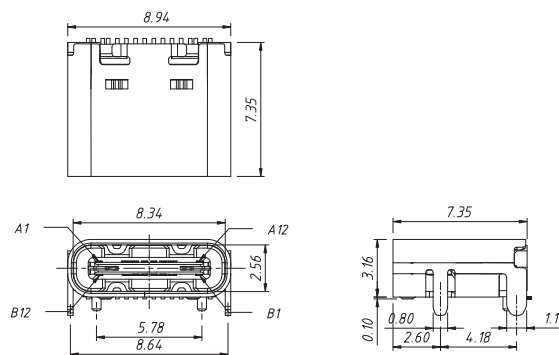
KLS1-5407



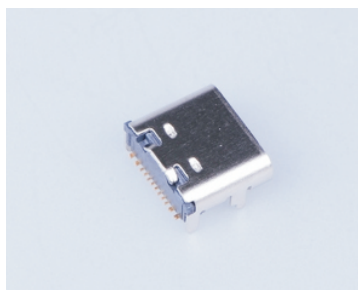
CONN RCPT USB Type C Female, 16P SMD R/A



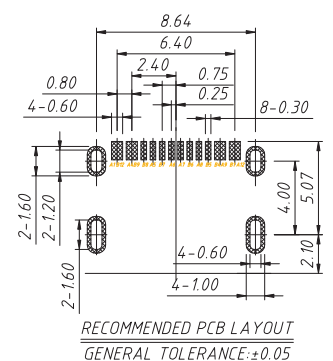
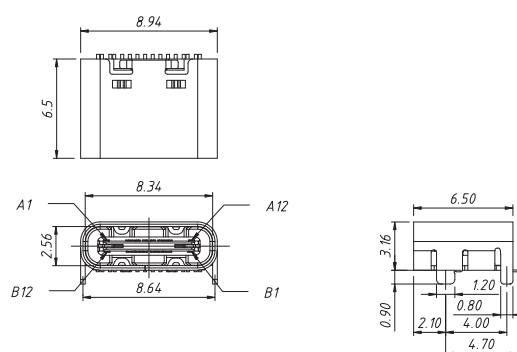
KLS1-5406



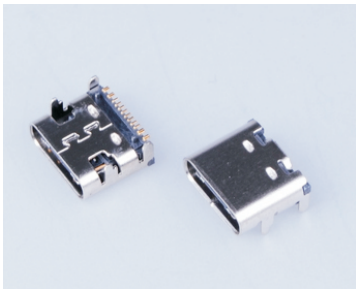
CONN RCPT USB Type C Female, 16P SMD L6.5



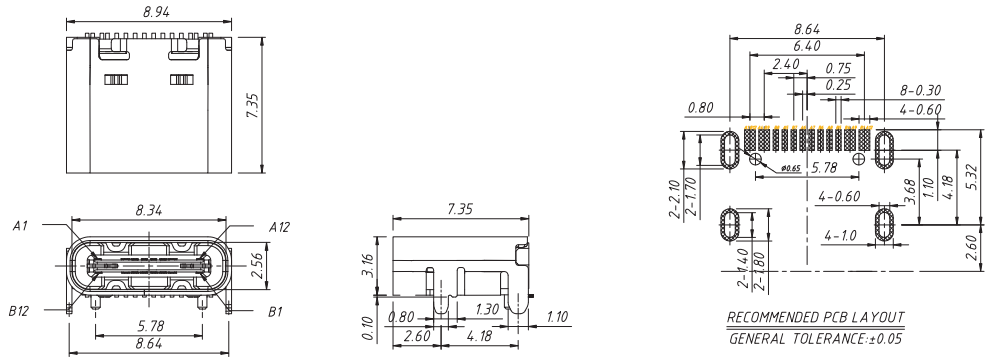
KLS1-5409



CONN RCPT USB Type C Female, 16P SMD R/A



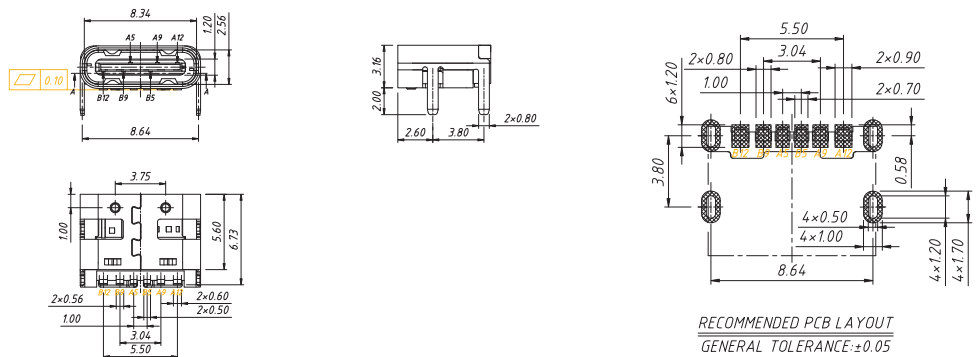
KLS1-5416



CONN RCPT USB Type C Female, 6P SMD R/A



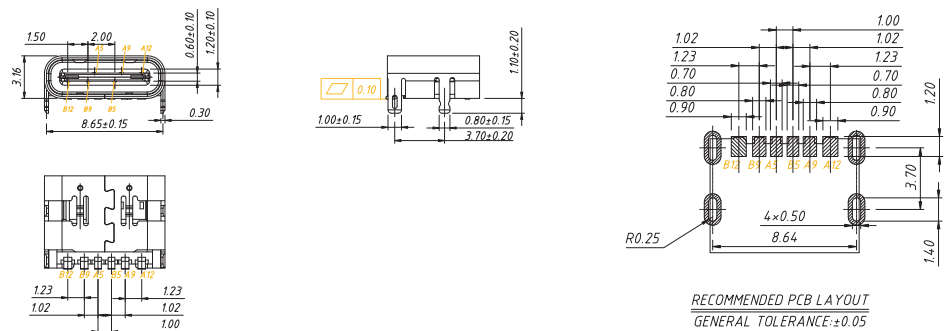
KLS1-5413



CONN RCPT USB Type C Female, 6P SMD R/A



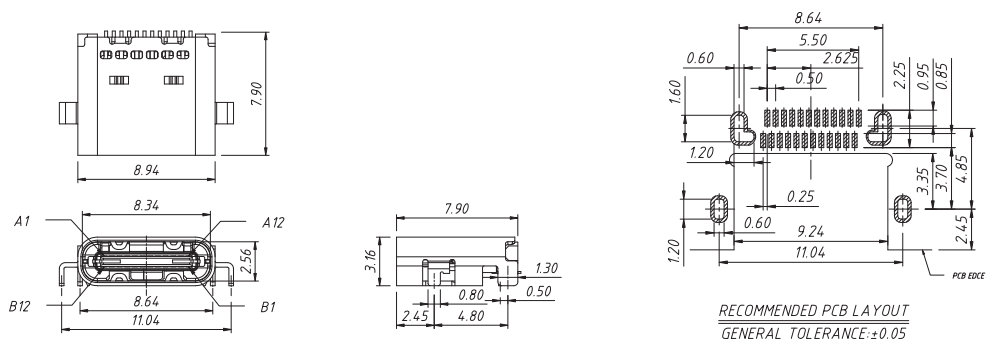
KLS1-5426



CONN RCPT USB Type C Female, MID MOUNT 0.8mm, 24P SMD R/A



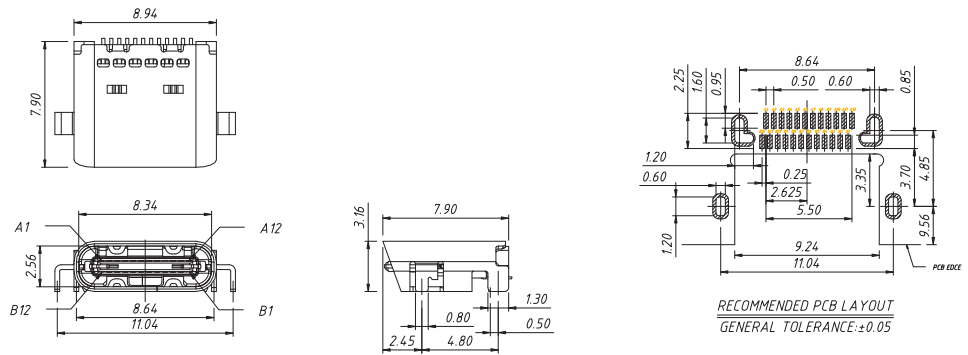
KLS1-5404



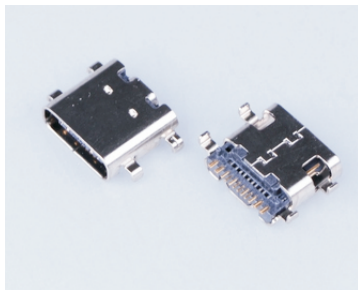
CONN RCPT USB Type C Female, MID MOUNT 0.8mm, 24P SMD R/A



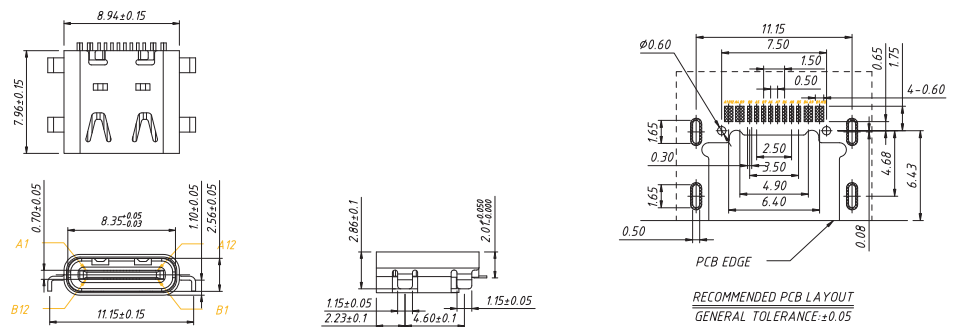
KLS1-5415



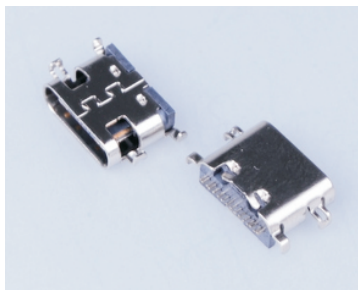
CONN RCPT USB Type C Female, MID MOUNT 1.1mm, 16P SMD R/A



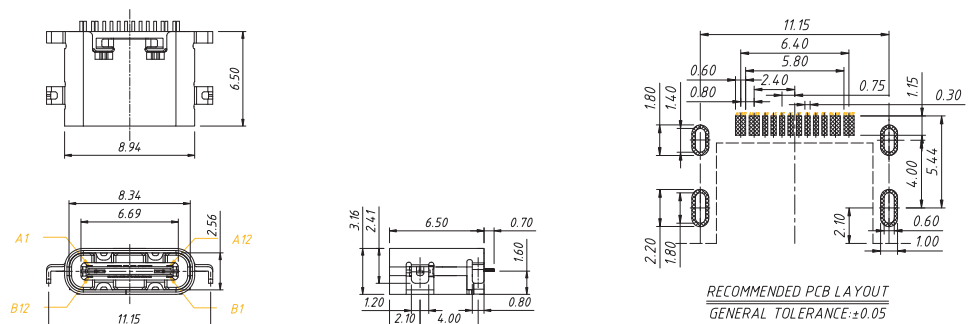
KLS1-5462



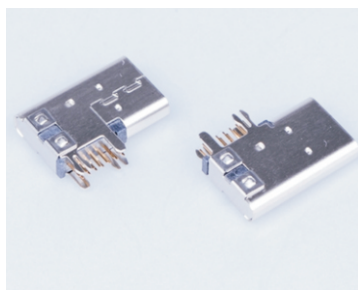
CONN RCPT USB Type C Female, MID MOUNT 1.6mm, 16P SMD R/A



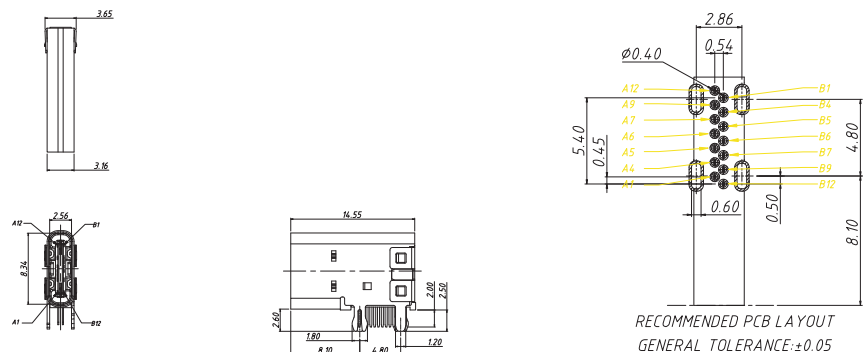
KLS1-5463



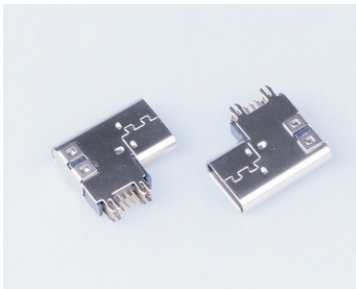
CONN RCPT USB Type C Female, 14P Side DIP R/A



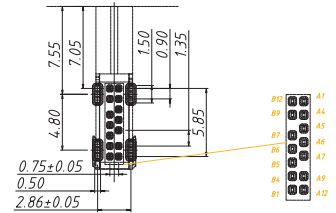
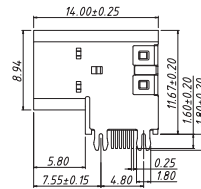
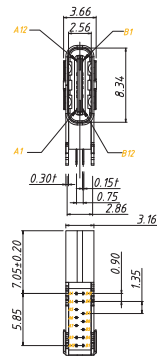
KLS1-5417



CONN RCPT USB Type C Female, 14P Side DIP R/A, PADDING 2.6mm



KLS1-5461

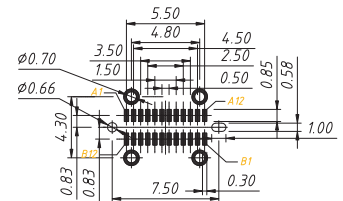
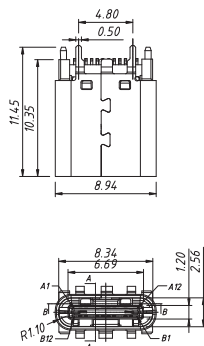


RECOMMENDED PCB LAYOUT
GENERAL TOLERANCE: ±0.05
PCB Thickness : 1.0 ~ 1.2mm

CONN RCPT USB Type C Female, 24P VERT SMD

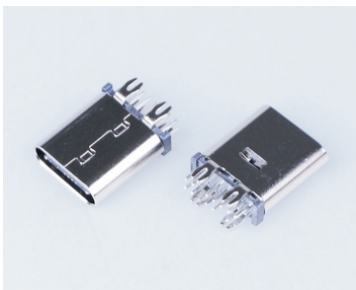


KLS1-5422

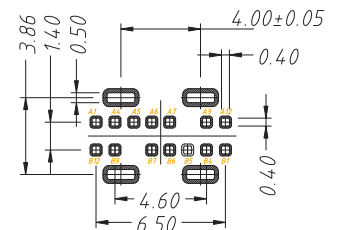
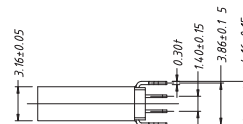
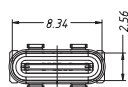
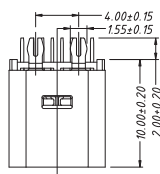


RECOMMENDED PCB LAYOUT
T=1.00mm
GENERAL TOLERANCE: ±0.05

CONN RCPT USB Type C Female, 14P DIP Straight, L10.0

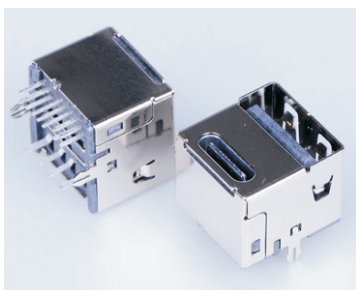


KLS1-5459

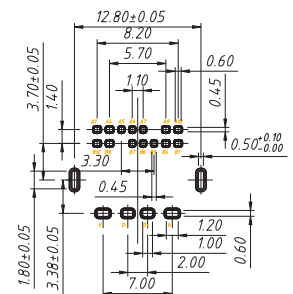
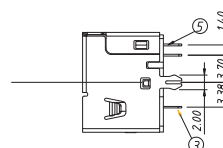
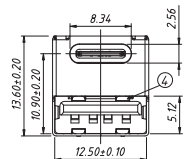
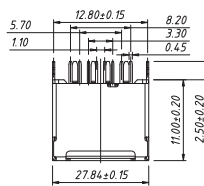


RECOMMENDED PCB LAYOUT
GENERAL TOLERANCE: ±0.05

CONN RCPT USB Type C Female & AF, 14P DIP Straight



KLS1-5460

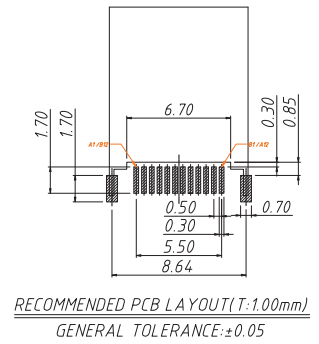
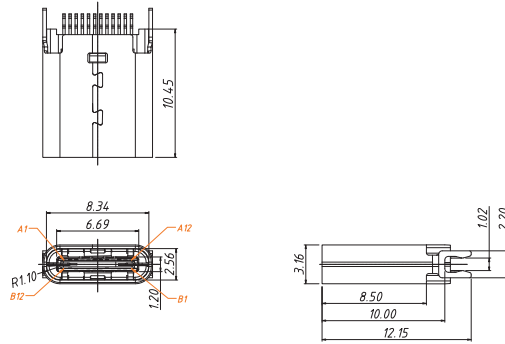


RECOMMENDED PCB LAYOUT
GENERAL TOLERANCE: ±0.05

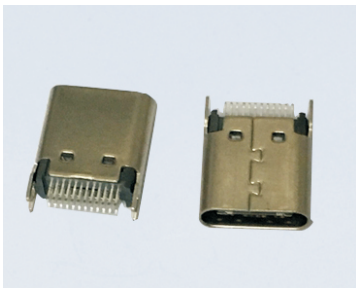
CONN RCPT USB Type C Female, 24P Board Edge, T1.0



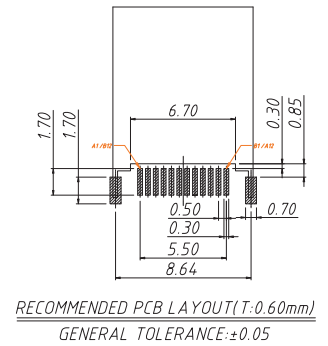
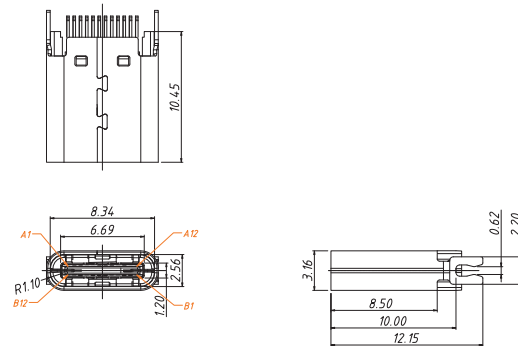
KLS1-5412



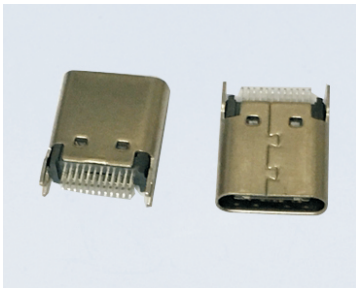
CONN RCPT USB Type C Female, 24P Board Edge, T0.6



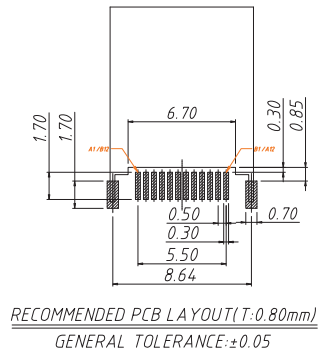
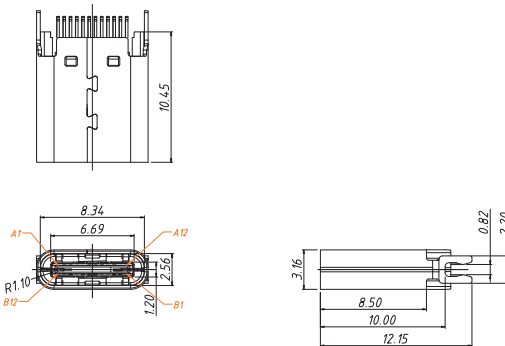
KLS1-5419



CONN RCPT USB Type C Female, 24P Board Edge, T0.8



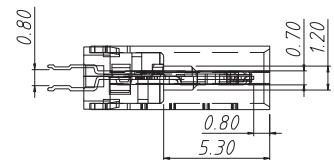
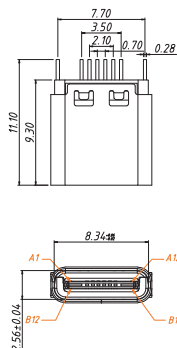
KLS1-5420



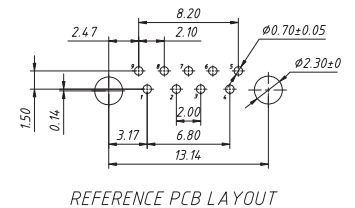
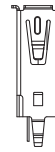
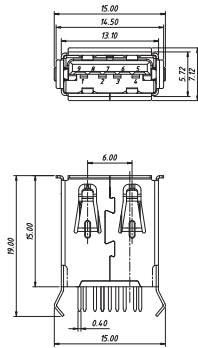
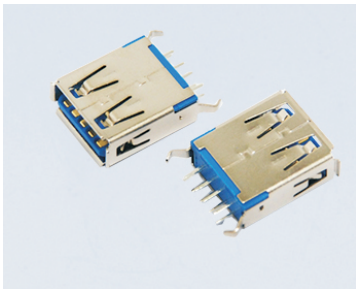
CONN RCPT USB Type C Female, 16P Board Edge T0.8



KLS1-5427



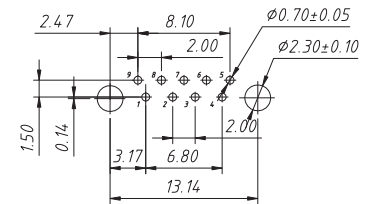
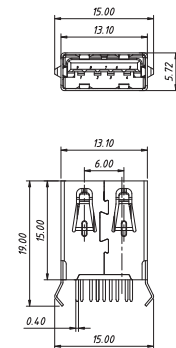
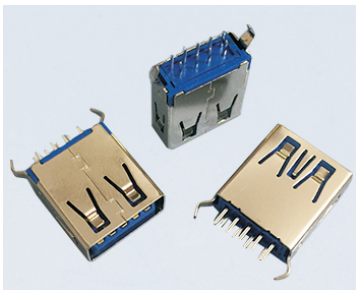
CONN RCPT USB 3.0 TYPE A Female, Straight



REFERENCE PCB LAYOUT

KLS1-3006

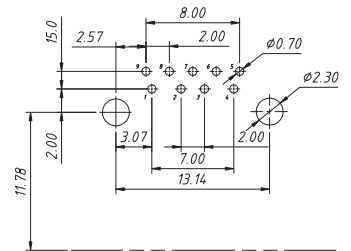
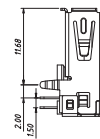
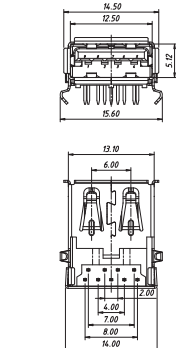
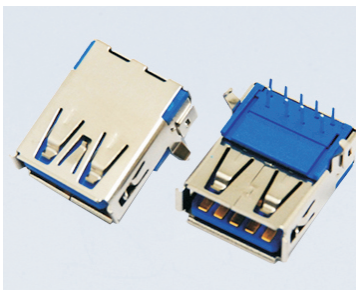
CONN RCPT USB 3.0 TYPE A Female, Straight



Recommended PCB Layout

KLS1-3018

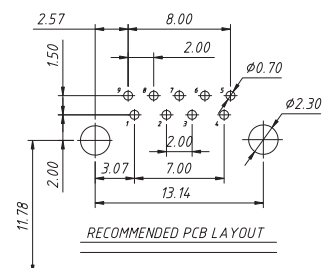
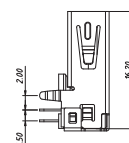
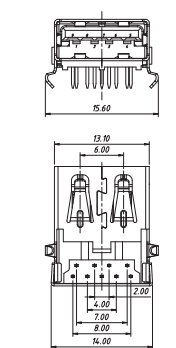
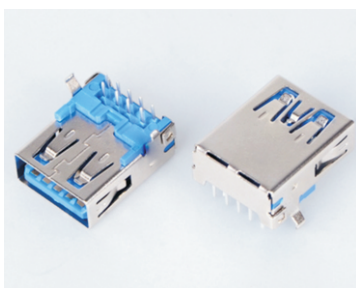
CONN RCPT USB 3.0 Type A Female, R/A



RECOMMENDED PCB LAYOUT

KLS1-146

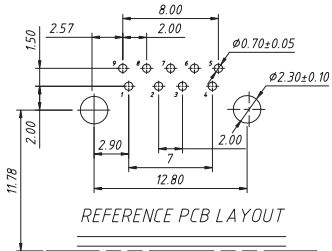
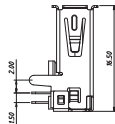
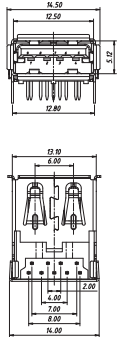
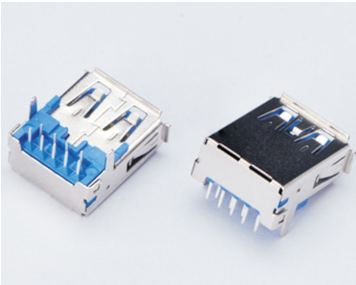
CONN RCPT USB 3.0 Type A Female, R/A



RECOMMENDED PCB LAYOUT

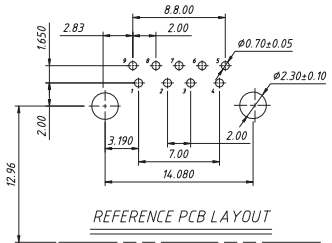
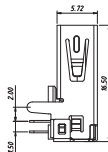
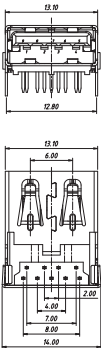
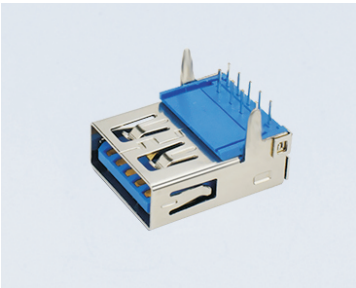
KLS1-3019

CONN RCPT USB 3.0 Type A Female, R/A



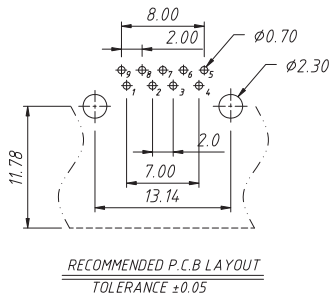
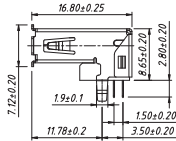
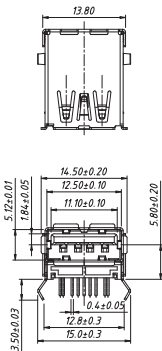
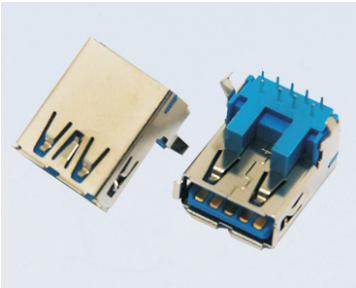
KLS1-3020

CONN RCPT USB 3.0 Type A Female, R/A



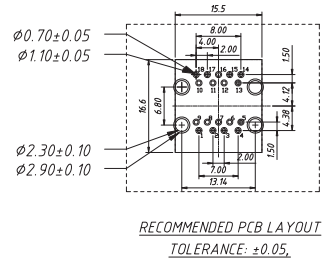
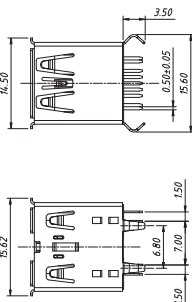
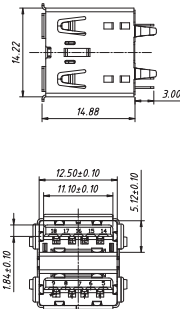
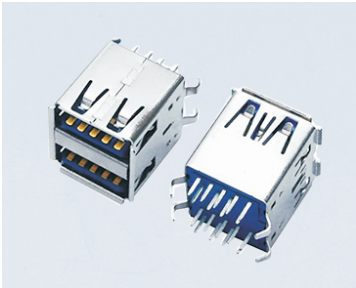
KLS1-3021

CONN RCPT USB 3.0 Type A Female, R/A H8.65mm



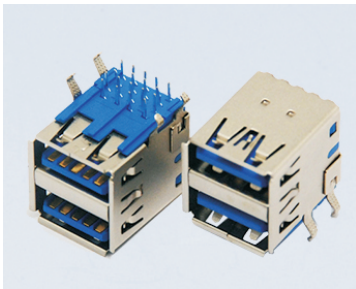
KLS1-3008

CONN RCPT USB 3.0 TYPE A Female, Straight, 2x1

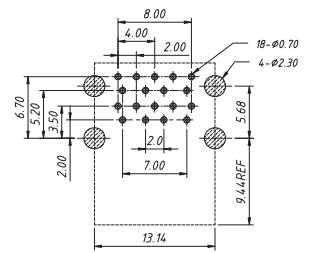
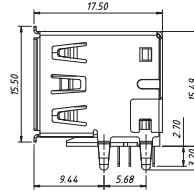
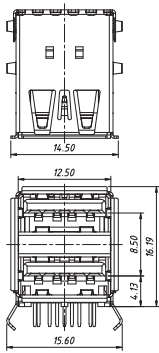


KLS1-3009

CONN RCPT USB 3.0 Type A Female, R/A, 2x1

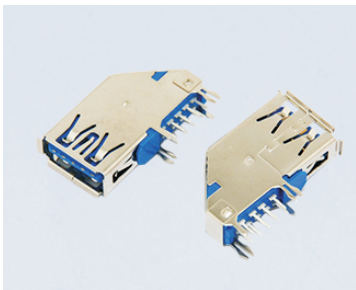


KLS1-3001

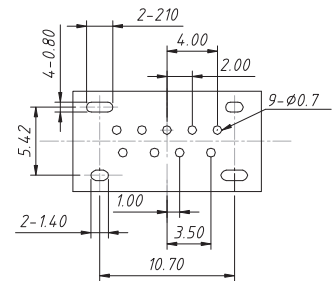
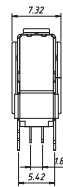
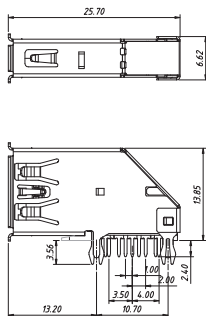


RECOMMENDED PCB LAYOUT
TOLERANCE: ±0.05

CONN RCPT USB 3.0 Type A Female, R/A



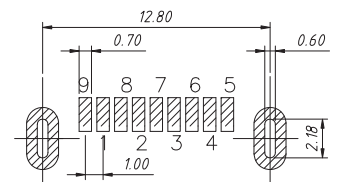
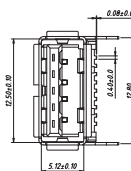
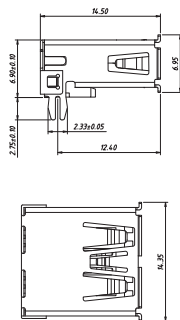
KLS1-317



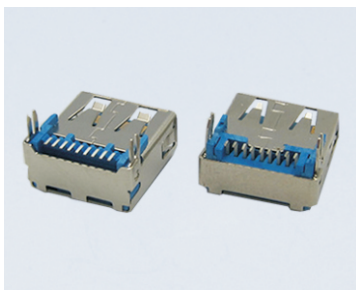
CONN RCPT USB 3.0 Type A Female, SMD



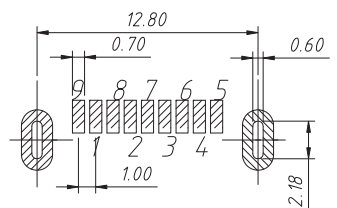
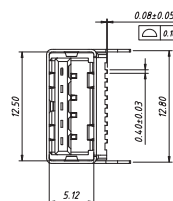
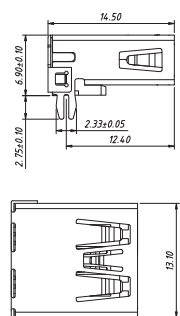
KLS1-3301



CONN RCPT USB 3.0 Type A Female, SMD

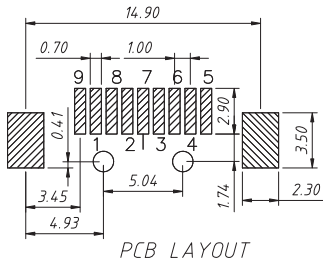
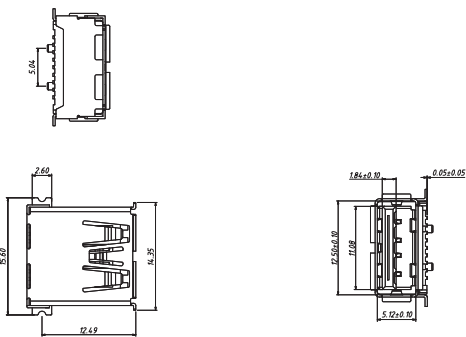
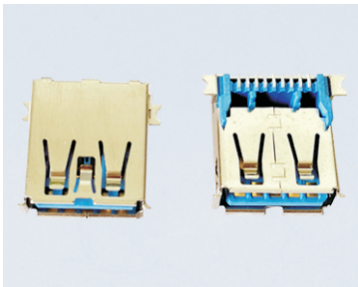


KLS1-3022



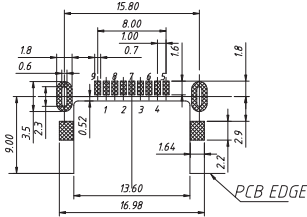
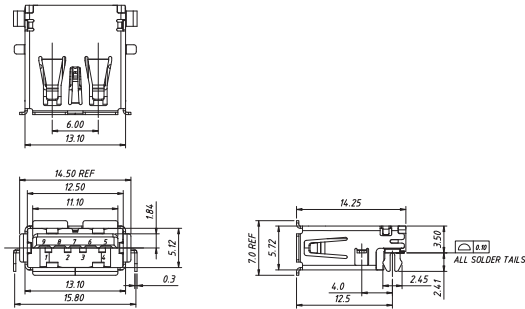
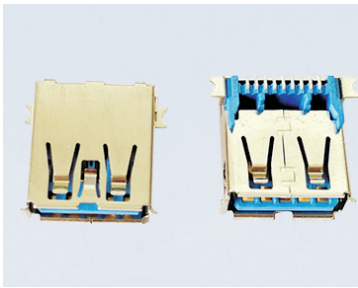
P.C.B LAYOUT

CONN RCPT USB 3.0 Type A Female, SMD



KLS1-3029

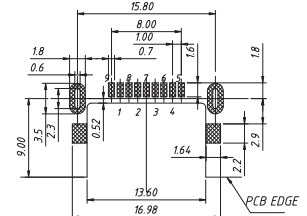
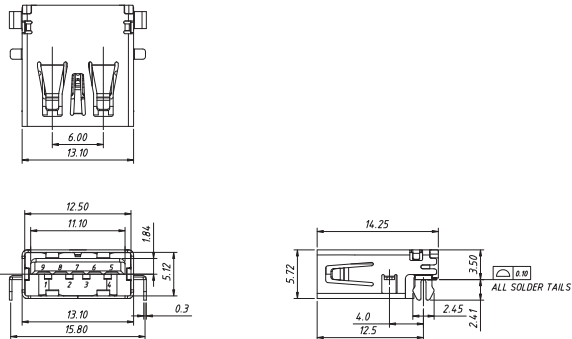
CONN RCPT USB 3.0 Type A Female, MID MOUNT SMD H3.5mm



RECOMMENDED PCB LAYOUT
TOLERANCE: ±0.05,
(TOP VIEW)

KLS1-3030

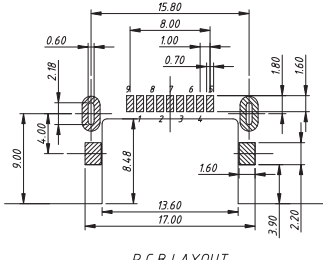
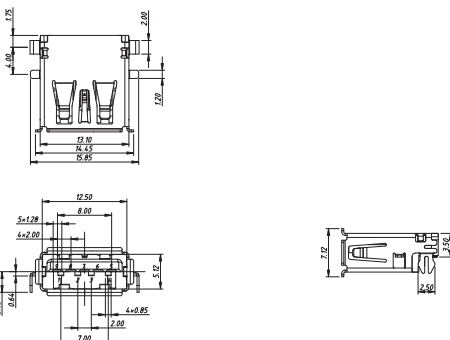
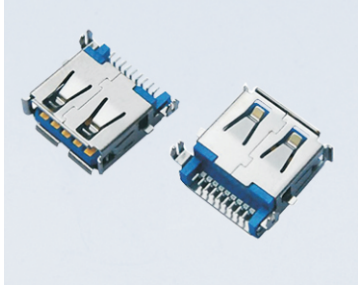
CONN RCPT USB 3.0 Type A Female, MID MOUNT SMD, H3.50mm



RECOMMENDED PCB LAYOUT
TOLERANCE: ±0.05,
(TOP VIEW)

KLS1-3007

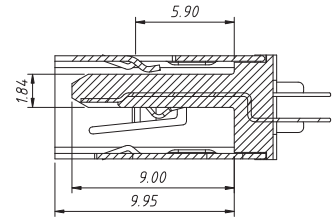
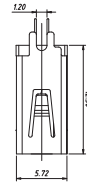
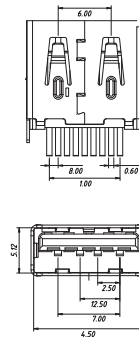
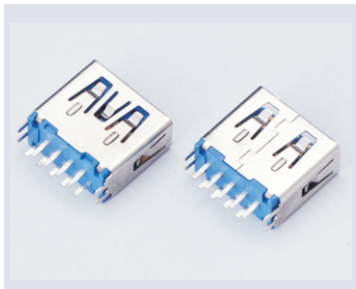
CONN RCPT USB 3.0 Type A Female, MID MOUNT, SMD



P.C.B LAYOUT

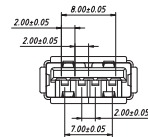
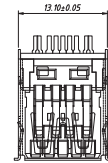
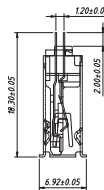
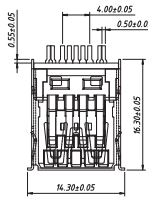
KLS1-3010

CONN RCPT USB 3.0 TYPE A Female,Board Edge



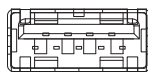
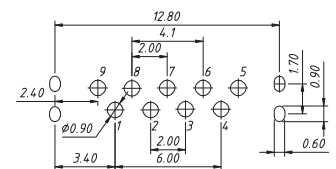
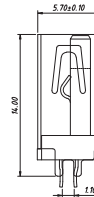
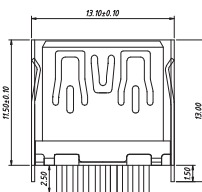
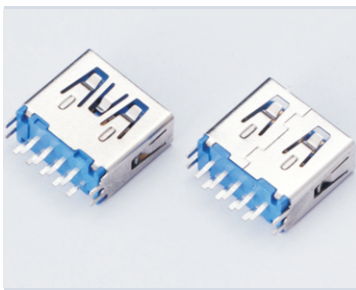
KLS1-3015

CONN RCPT USB 3.0 TYPE A Female,Board Edge



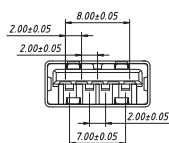
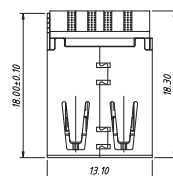
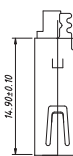
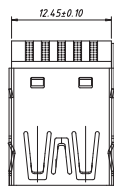
KLS1-3016

CONN RCPT USB 3.0 TYPE A Female,Board Edge



KLS1-3017

CONN RCPT USB 3.0 TYPE A Female,Solder

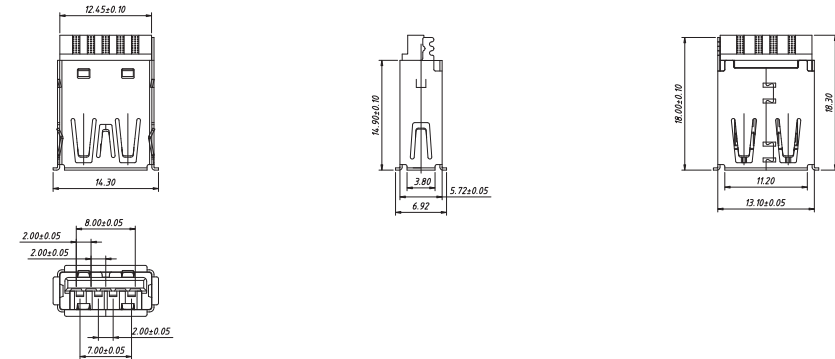


KLS1-3012

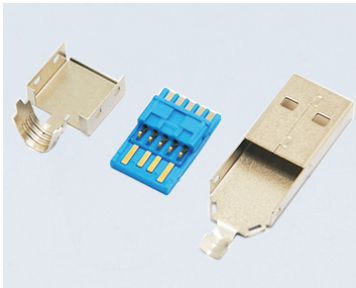
CONN RCPT USB 3.0 TYPE A Female, Solder



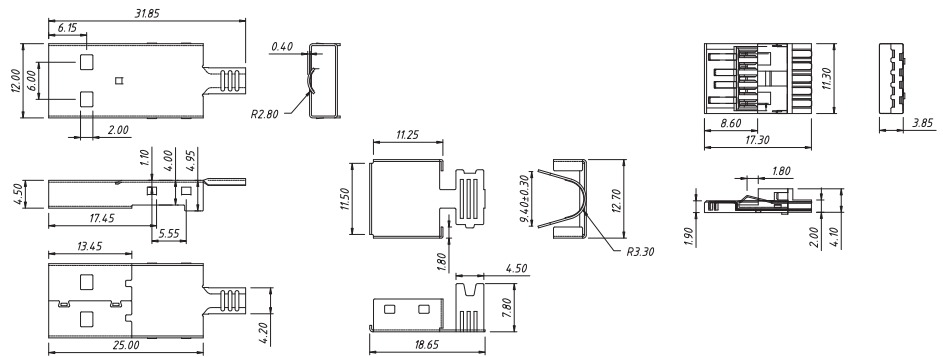
KLS1-3013



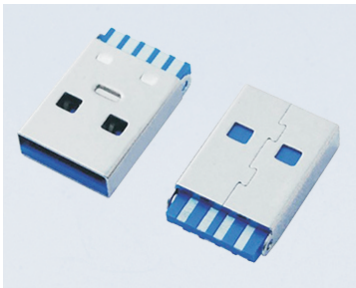
CONN RCPT USB 3.0 Type A Male, Solder



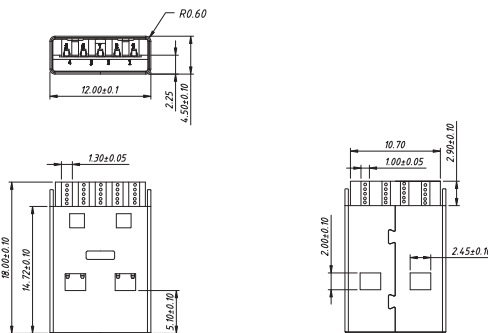
KLS1-149



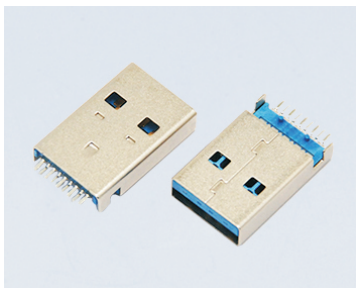
CONN RCPT USB 3.0 Type A Male, Solder



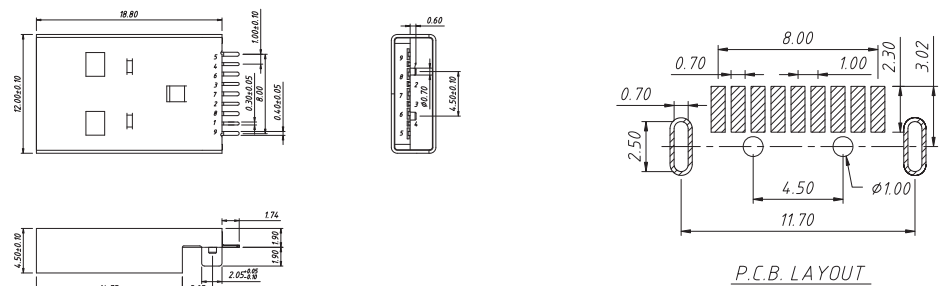
KLS1-312



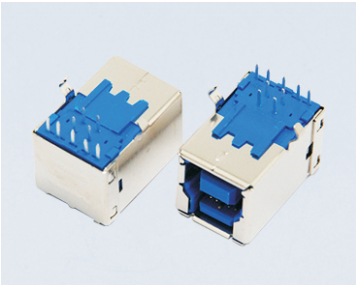
CONN RCPT USB 3.0 Type A Male, MID MOUNT, SMD, H1.90mm



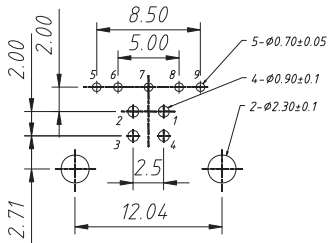
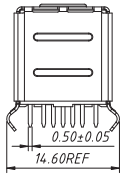
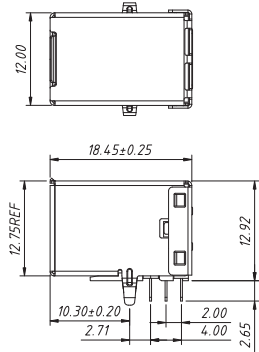
KLS1-310



CONN PLUG USB 3.0 Type B Female, R/A

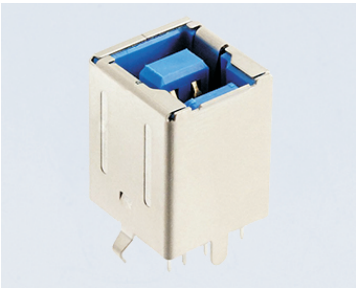


KLS1-148F

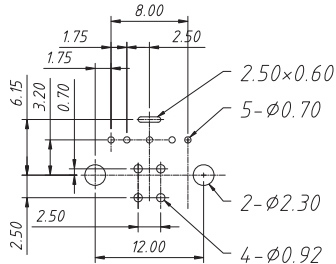
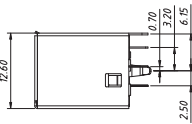
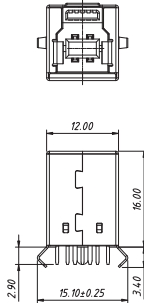


P.C.B LAYOUT

CONN PLUG USB 3.0 Type B Female, Straight

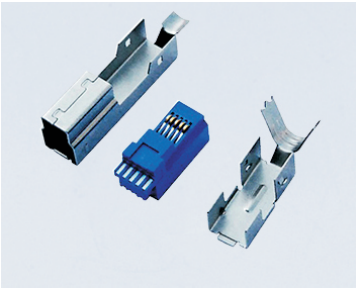


KLS1-316

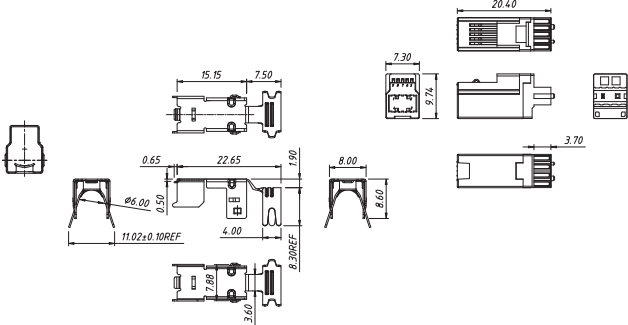
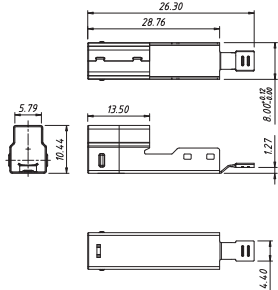


P.C.B LAYOUT

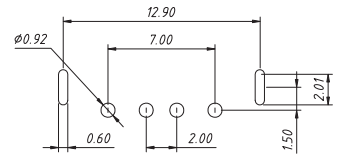
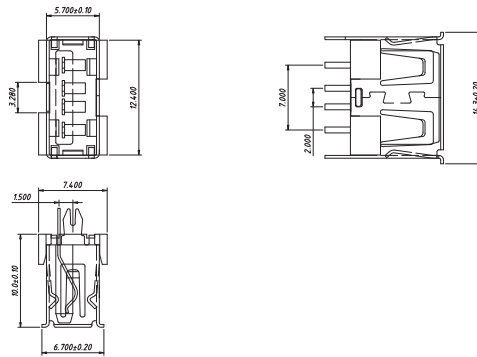
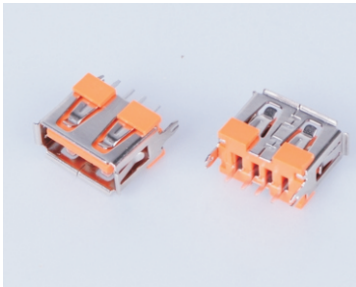
CONN PLUG USB 3.0 Type B Male, Solder



KLS1-148

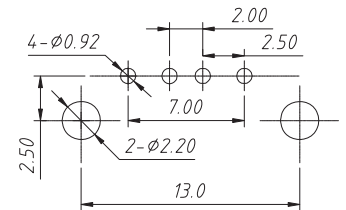
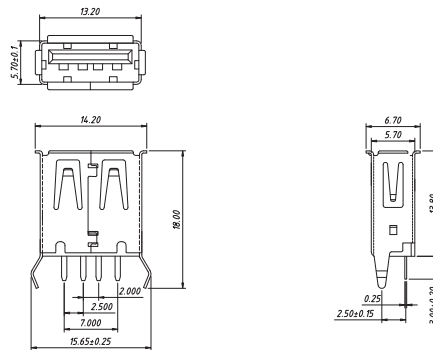


CONN COM TYPE A USB Female Straight H10.0



KLS1-1805

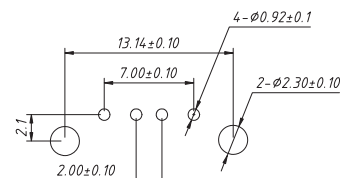
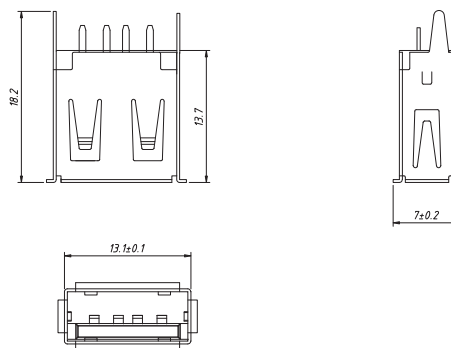
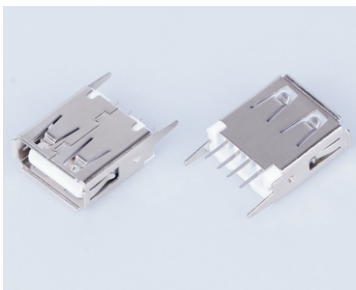
CONN COM TYPE A USB Female Straight H13.7



RECOMMENDED PCB LAYOUT

KLS1-181B

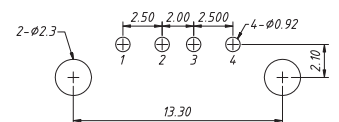
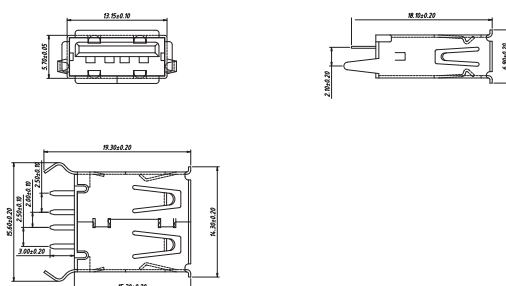
CONN COM TYPE A USB Female Straight H13.7



RECOMMENDED PCB LAYOUT

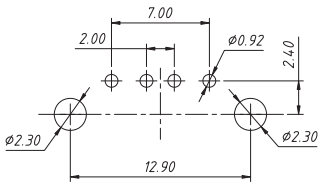
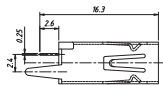
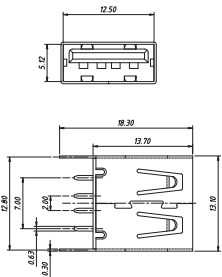
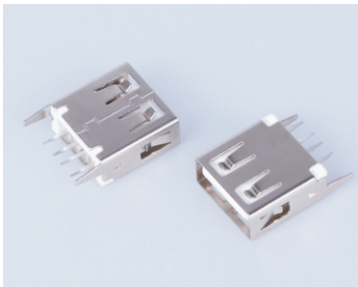
KLS1-1821

CONN COM TYPE A USB Female Straight H15.0



KLS1-1823

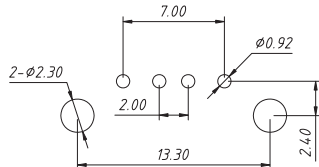
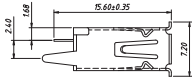
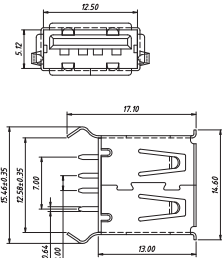
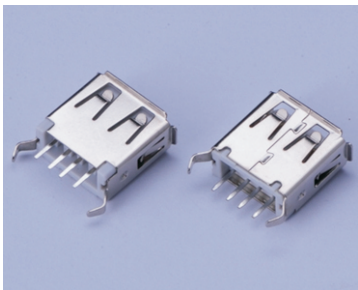
CONN COM TYPE A USB Female Straight H13.7



PCB LAYOUT
TOL: ±0.05

KLS1-1830

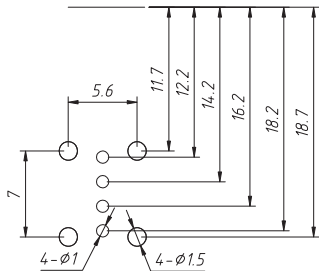
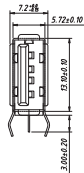
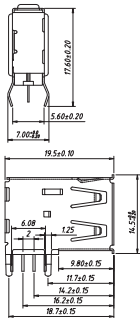
CONN COM TYPE A USB Female Straight H13.0



PCB LAYOUT

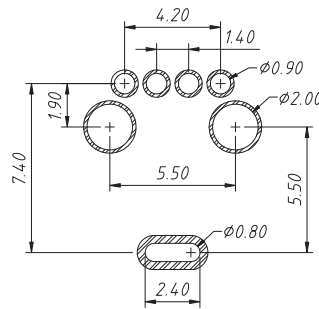
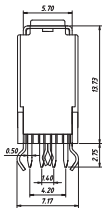
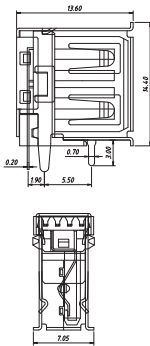
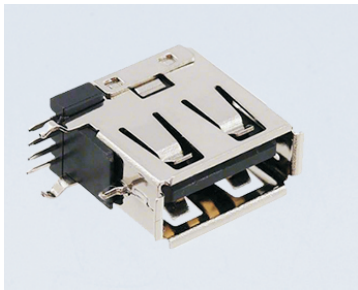
KLS1-1831

CONN COM TYPE A USB Female R/A



KLS1-191

CONN COM TYPE A USB Female R/A

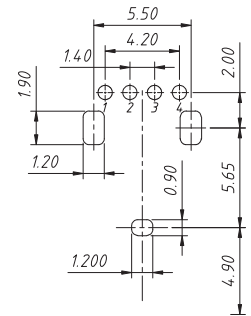
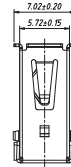
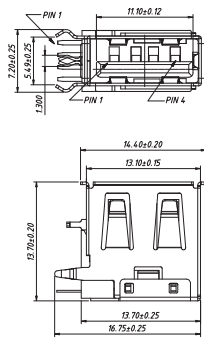


KLS1-1815

CONN COM TYPE A USB Female R/A, Reverse

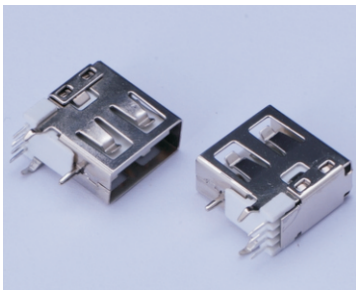


KLS1-1824

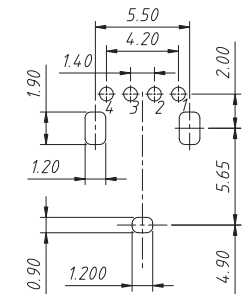
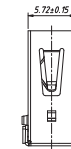
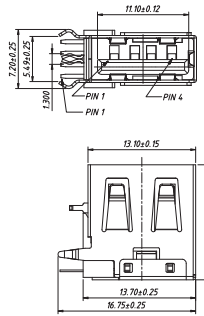


RECOMMENDED PCB LAYOUT

CONN COM TYPE A USB Female R/A

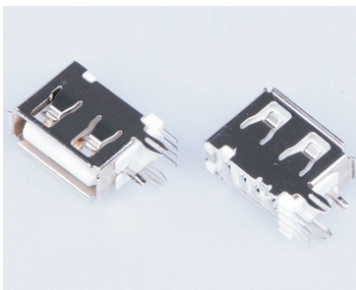


KLS1-1814

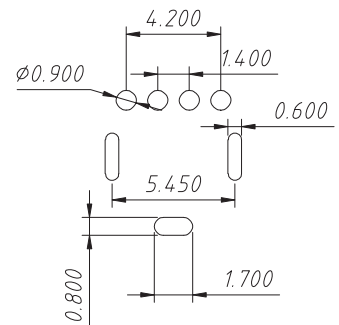
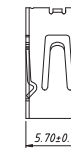
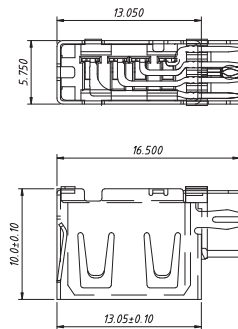


RECOMMENDED PCB LAYOUT

CONN COM TYPE A USB Female R/A



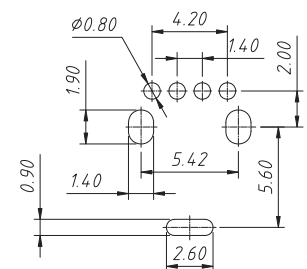
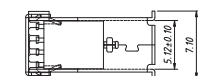
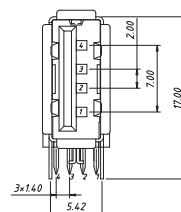
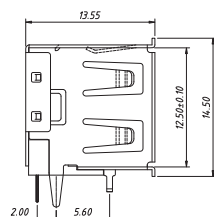
KLS1-1822



CONN COM TYPE A USB Female R/A, Reverse

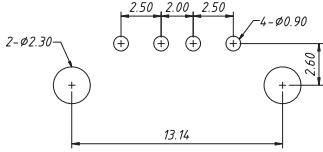
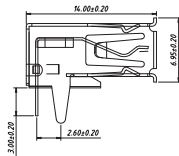
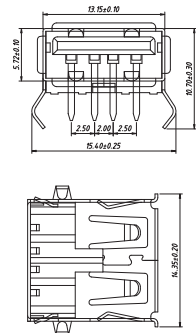


KLS1-1825



RECOMMENDED PCB LAYOUT

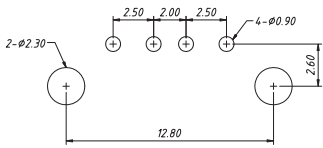
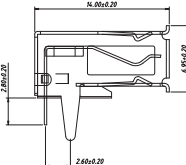
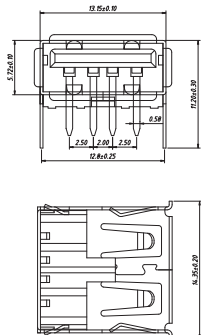
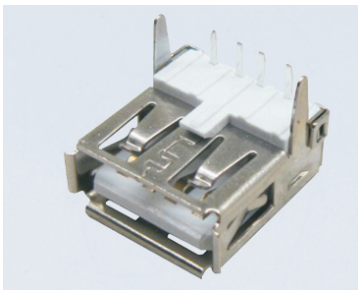
CONN COM TYPE A USB Female R/A



RECOMMENDED PCB LAYOUT
TOLERANCE: ±0.05

KLS1-181A

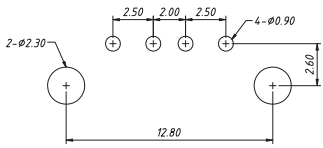
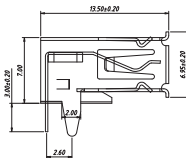
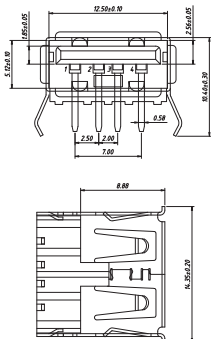
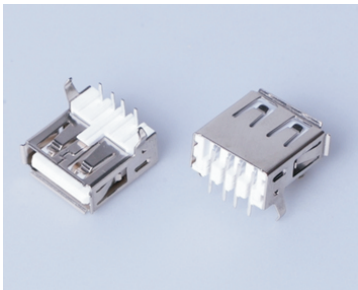
CONN COM TYPE A USB Female R/A



RECOMMENDED PCB LAYOUT
TOLERANCE: ±0.05

KLS1-1811

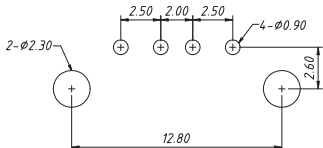
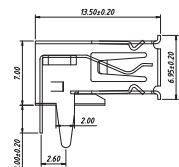
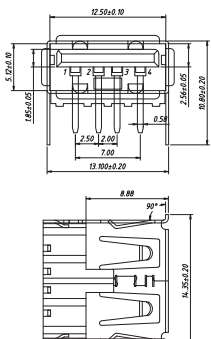
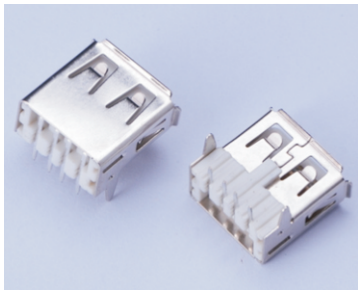
CONN COM TYPE A USB Female R/A



RECOMMENDED PCB LAYOUT
TOLERANCE: ±0.05

KLS1-1810

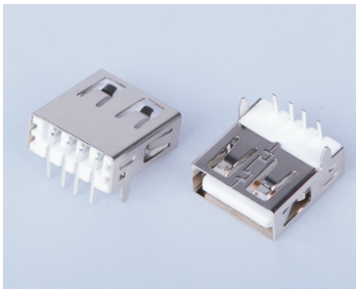
CONN COM TYPE A USB Female R/A



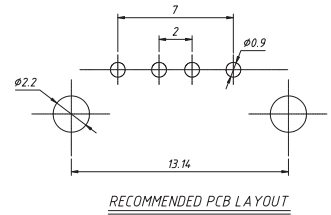
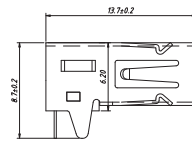
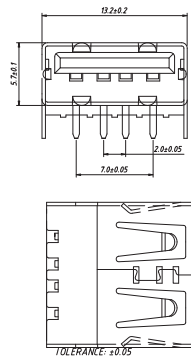
RECOMMENDED PCB LAYOUT
TOLERANCE: ±0.05

KLS1-181AB

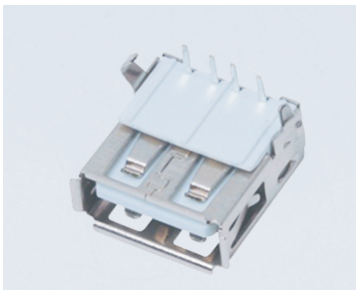
CONN COM TYPE A USB Female R/A



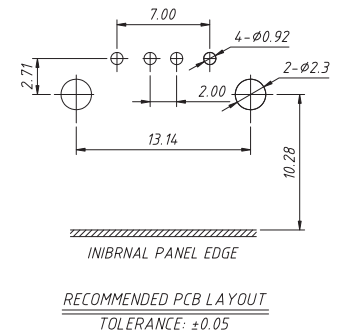
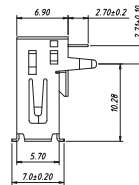
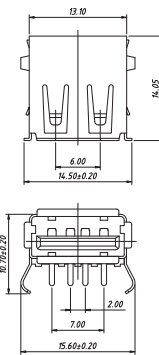
KLS1-1820



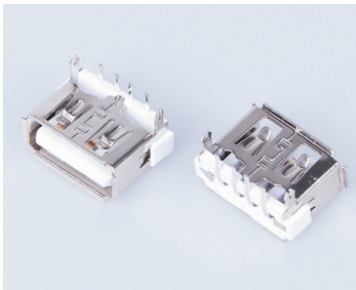
CONN COM TYPE A USB Female R/A, Reverse



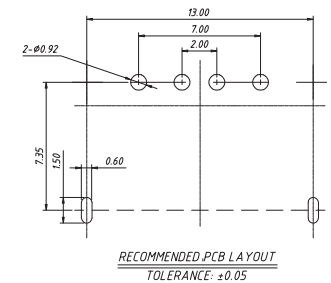
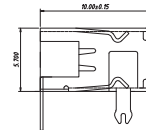
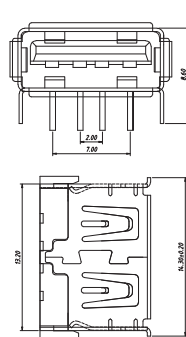
KLS1-18R1



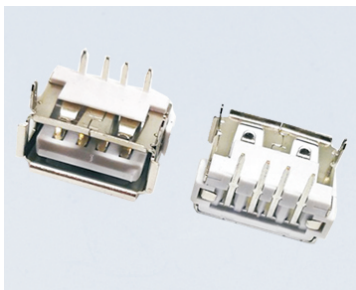
CONN COM TYPE A USB Female R/A, L10.0



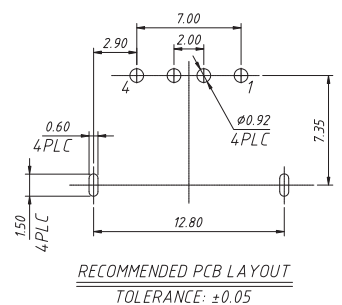
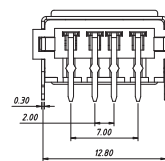
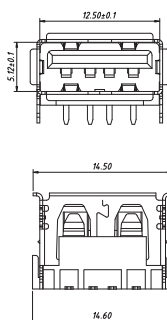
KLS1-1826



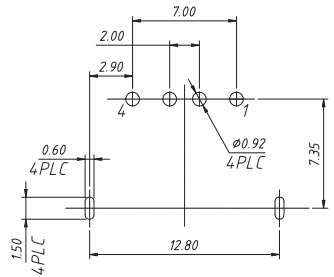
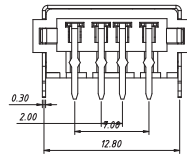
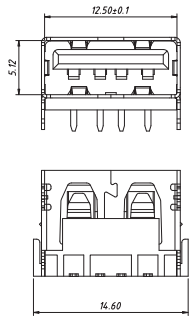
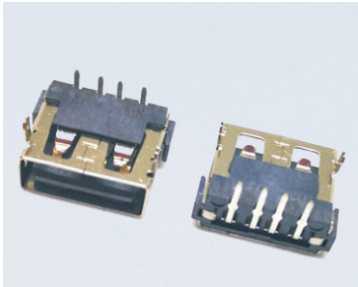
CONN COM TYPE A USB Female R/A, L10.0



KLS1-1807



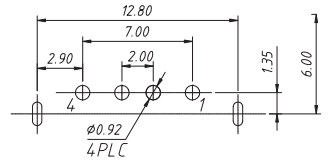
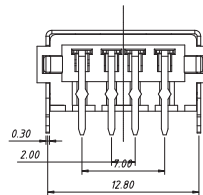
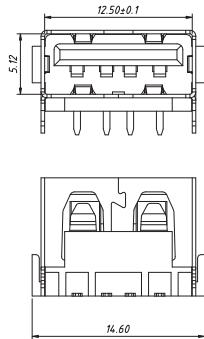
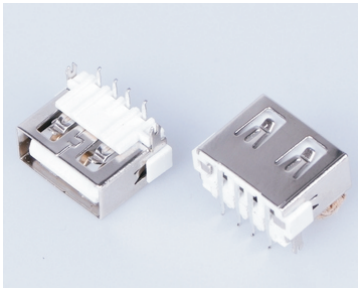
CONN COM TYPE A USB Female R/A,L10.0



RECOMMENDED PCB LAYOUT
TOLERANCE: ±0.05

KLS1-1804

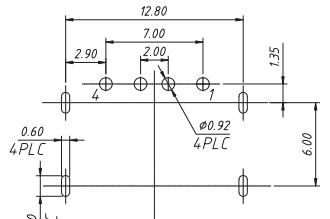
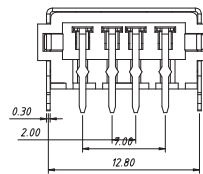
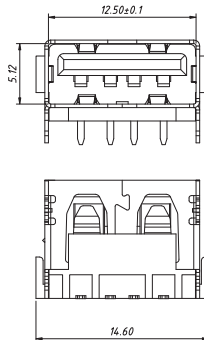
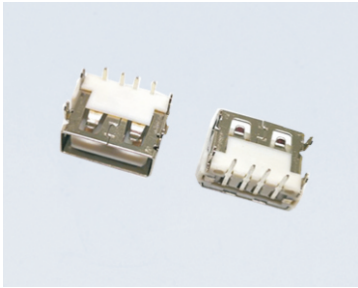
CONN COM TYPE A USB Female R/A,L10.0



RECOMMENDED PCB LAYOUT
TOLERANCE: ±0.05

KLS1-185

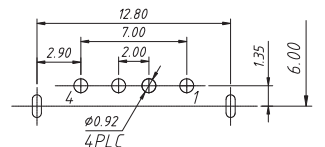
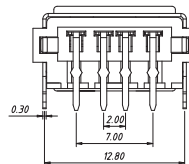
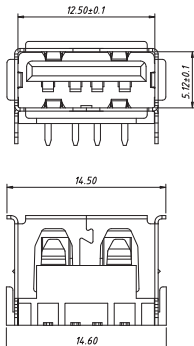
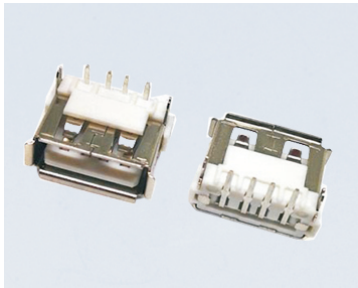
CONN COM TYPE A USB Female R/A,L10.0



RECOMMENDED PCB LAYOUT
TOLERANCE: ±0.05

KLS1-195

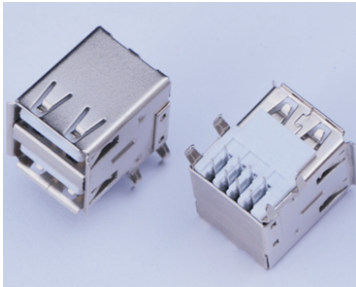
CONN COM TYPE A USB Female R/A,L10.0



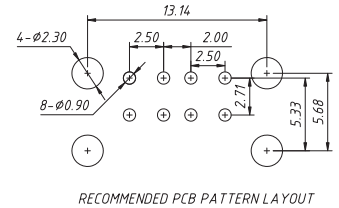
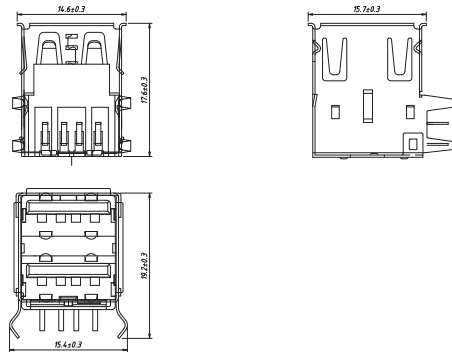
RECOMMENDED PCB LAYOUT
TOLERANCE: ±0.05

KLS1-196

CONN USB 2.0 A TYPE Female R/A



KLS1-153

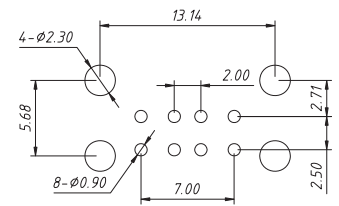
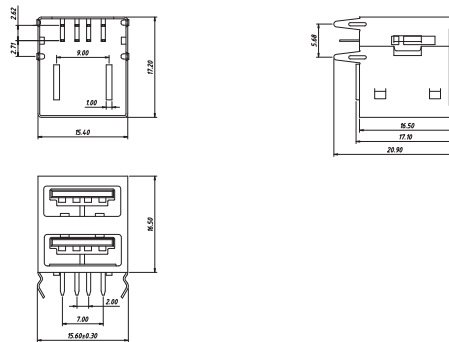


RECOMMENDED PCB PATTERN LAYOUT

CONN USB 2.0 A TYPE Female R/A



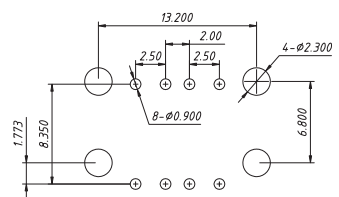
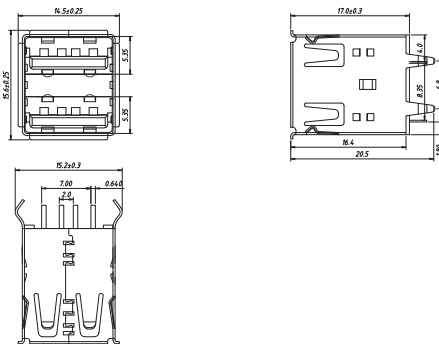
KLS1-1531



CONN USB 2.0 A TYPE Female Straight



KLS1-189

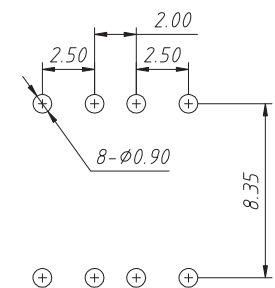
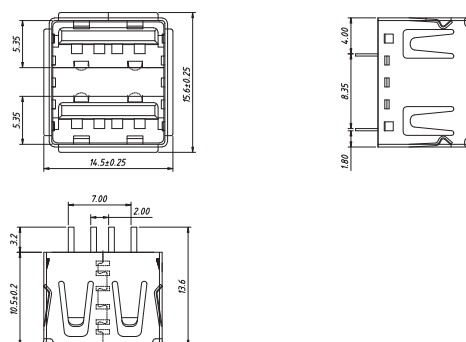


RECOMMENDED PCB LAYOUT

CONN USB 2.0 A TYPE Female Straight

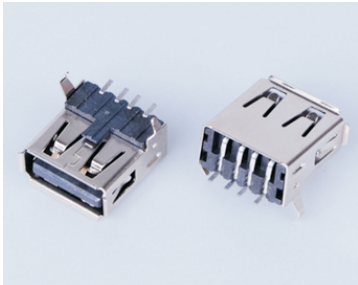


KLS1-1891

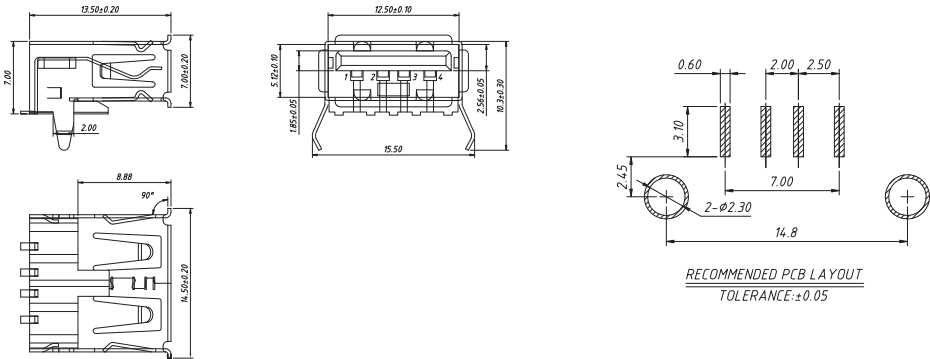


RECOMMENDED PCB LAYOUT

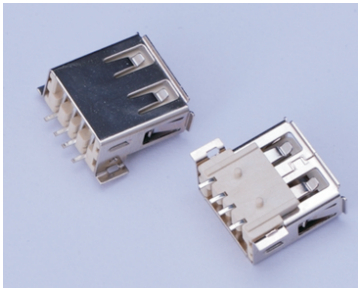
CONN COM TYPE A USB Female SMD



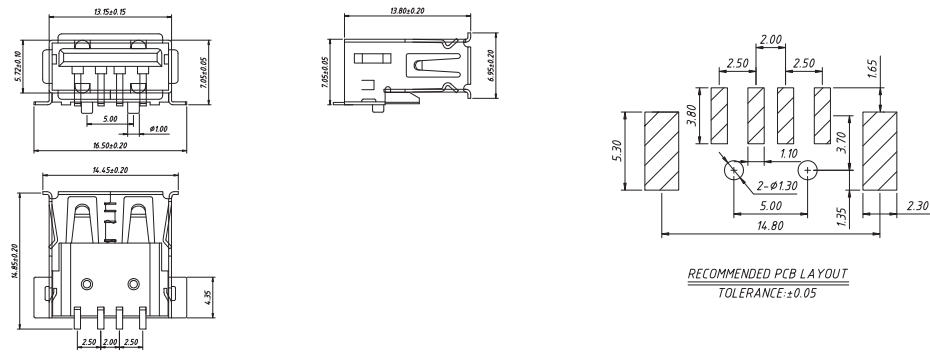
KLS1-181C



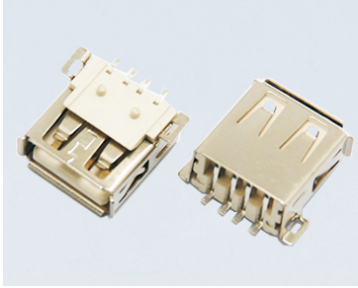
CONN COM TYPE A USB Female SMD



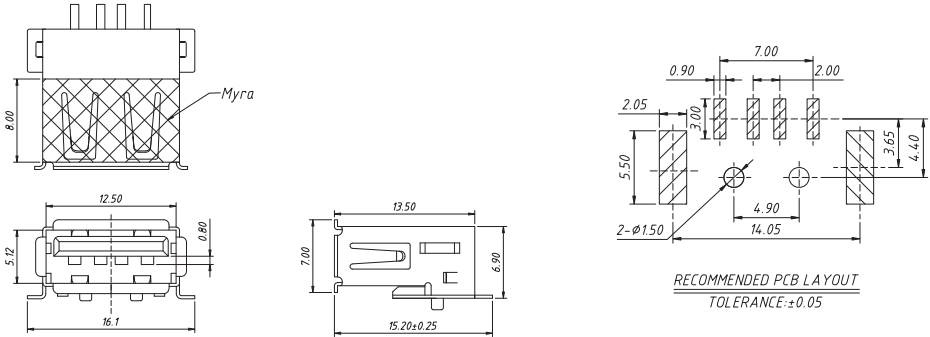
KLS1-181E



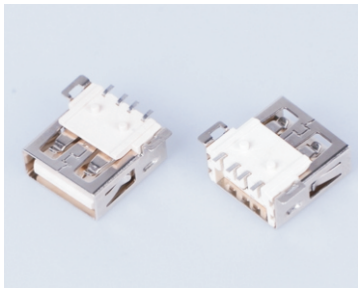
CONN COM TYPE A USB Female SMD



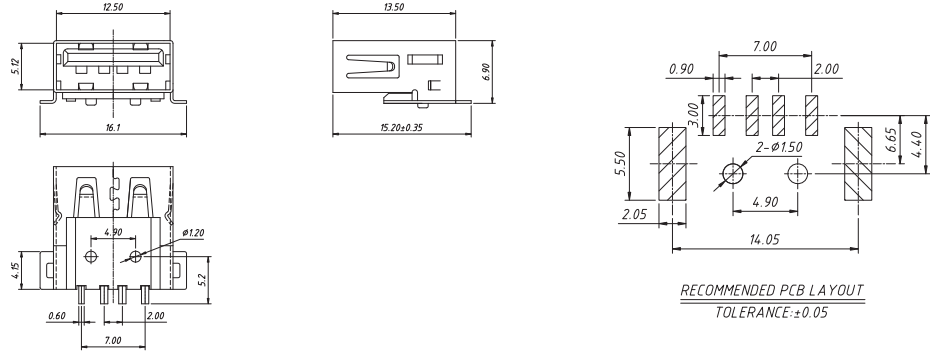
KLS1-1827



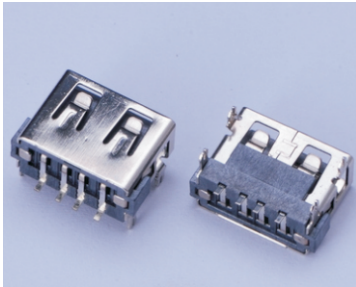
CONN COM TYPE A USB Female SMD



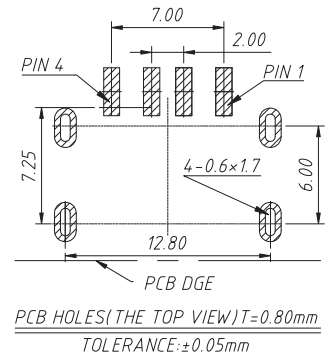
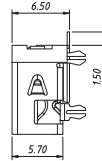
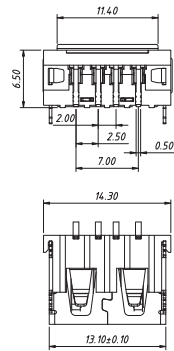
KLS1-1813



CONN COM TYPE A USB Female SMD, L10.0



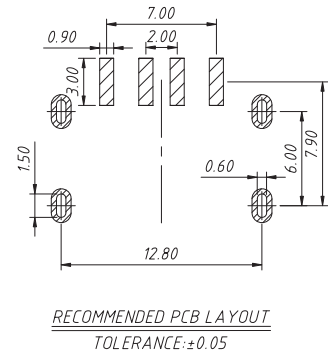
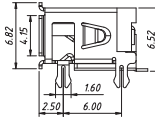
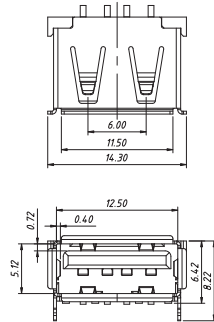
KLS1-1182



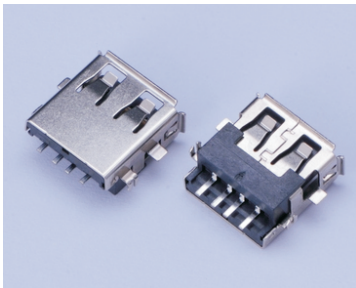
CONN COM TYPE A USB Female SMD, L10.0



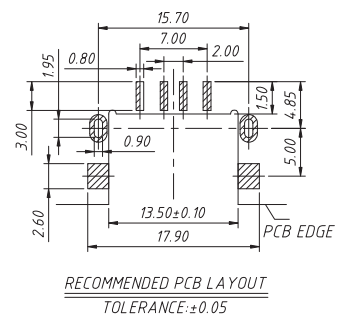
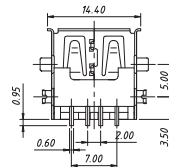
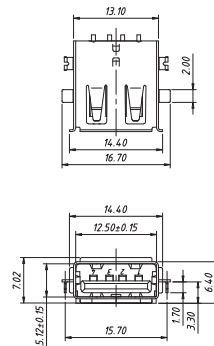
KLS1-1832



CONN COM TYPE A USB Female MID MOUNT 3.4mm



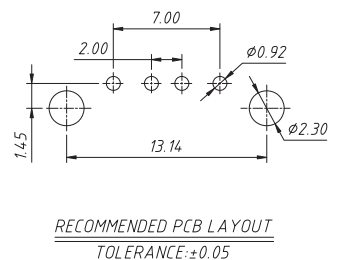
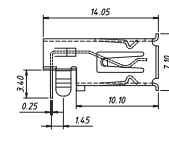
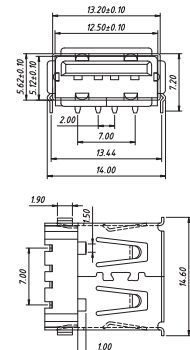
KLS1-1816



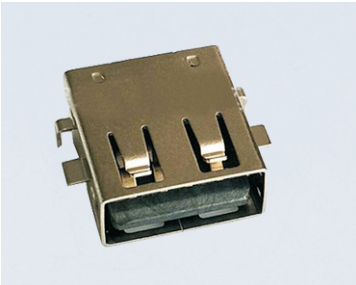
CONN COM TYPE A USB Female MID MOUNT H2.0mm



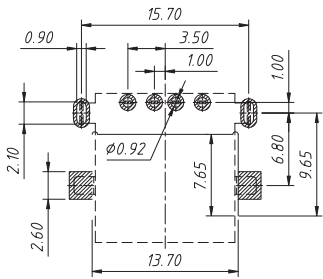
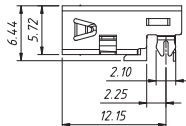
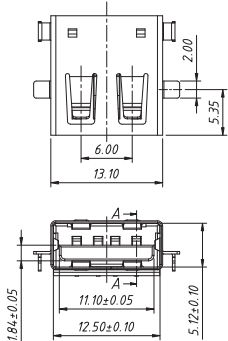
KLS1-1828



CONN COM TYPE A USB Female MID MOUNT Reverse

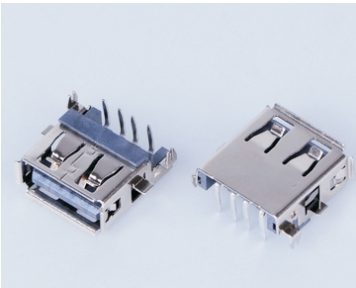


KLS1-1811

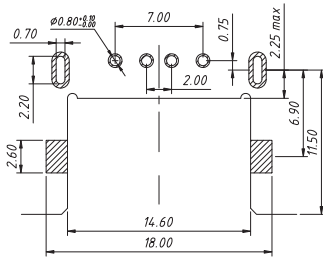
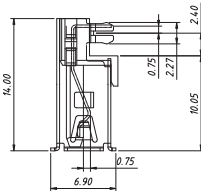
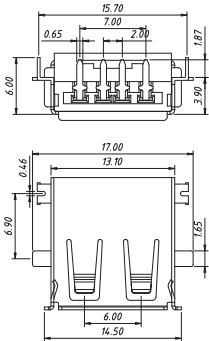


RECOMMENDED PCB LAYOUT
TOLERANCE:±0.05

CONN COM TYPE A USB Female MID MOUNT H3.9mm

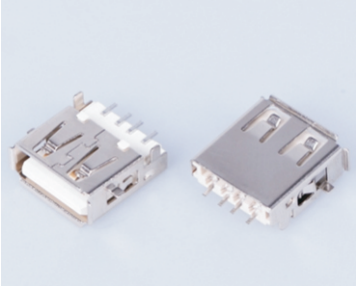


KLS1-1829

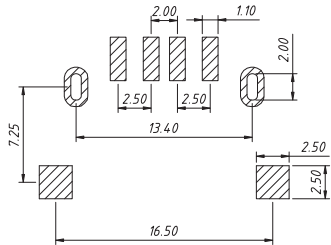
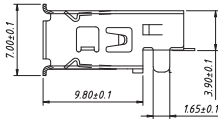
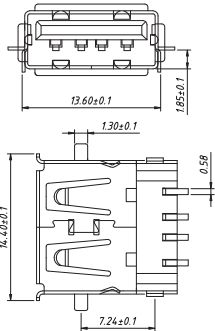


RECOMMENDED PCB LAYOUT
TOLERANCE:±0.05

CONN COM TYPE A USB Female MID MOUNT H3.9mm

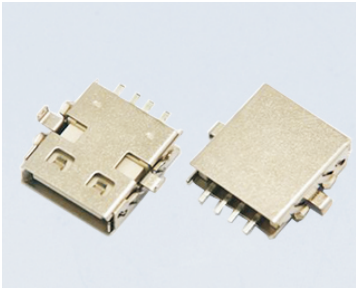


KLS1-181H

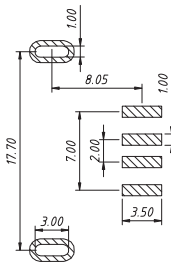
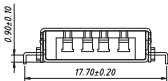
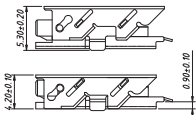
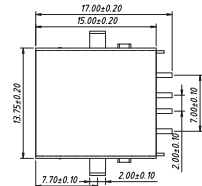


RECOMMENDED PCB LAYOUT
TOLERANCE:±0.05

CONN COM TYPE A USB Female MID MOUNT 0.9mm

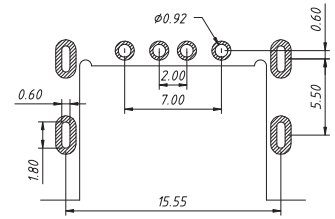
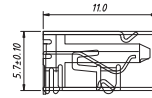
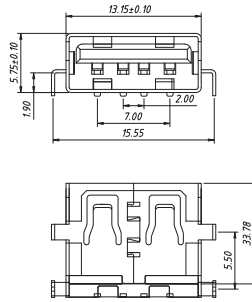
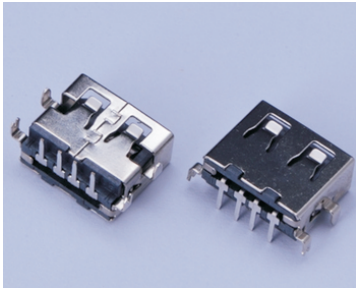


KLS1-1101



RECOMMENDED PCB LAYOUT
TOLERANCE:±0.05

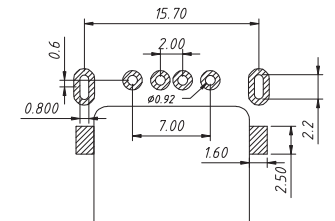
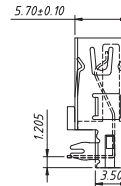
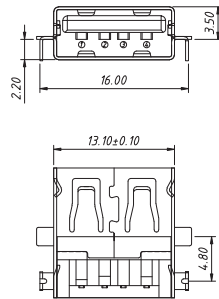
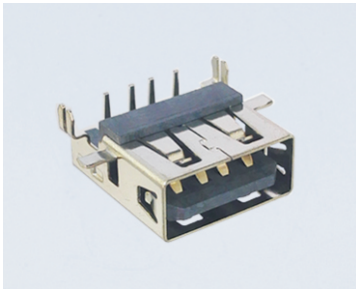
CONN COM TYPE A USB Female MID MOUNT 1.9mm



RECOMMENDED PCB LAYOUT
TOLERANCE: ± 0.05

KLS1-1817

CONN COM TYPE A USB Female MID MOUNT H3.5mm



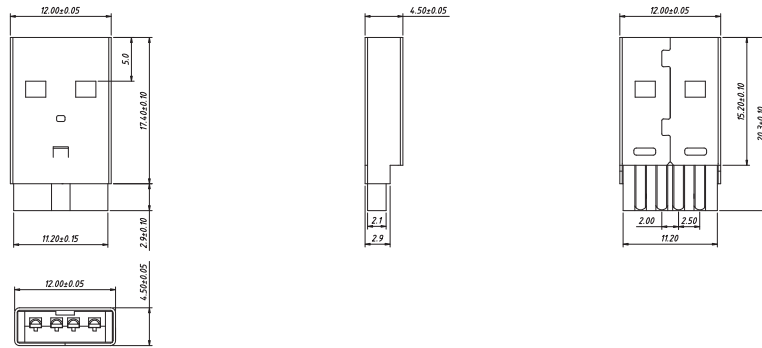
RECOMMENDED PCB LAYOUT
TOLERANCE: ± 0.05

KLS1-1183

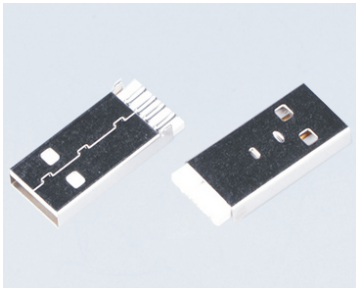
CONN PLUG USB TYPE A MALE SOLDER



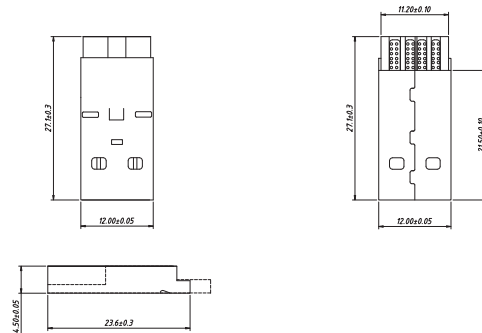
KLS1-1833



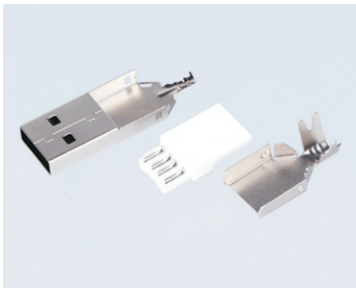
CONN PLUG USB A-MALE SOLDER



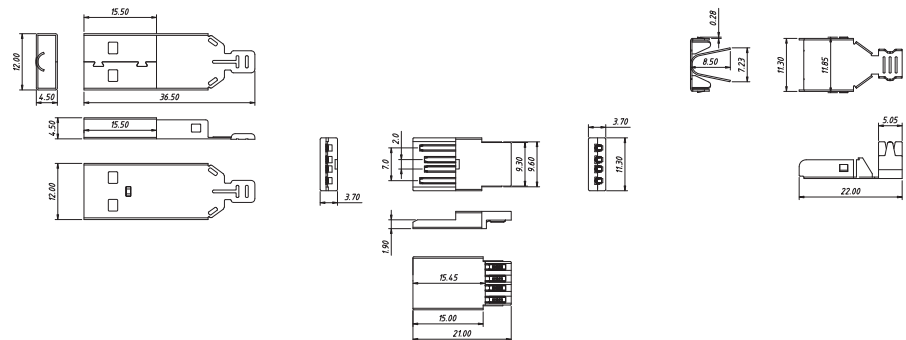
KLS1-1838



CONN PLUG USB A-MALE SOLDER



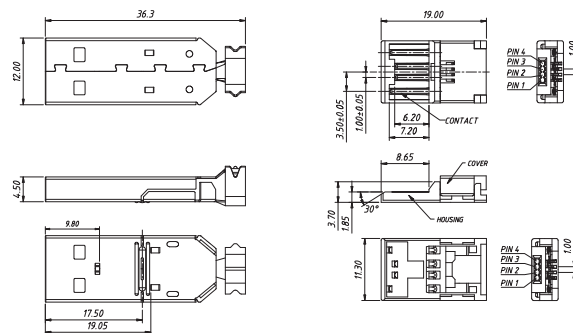
KLS1-182



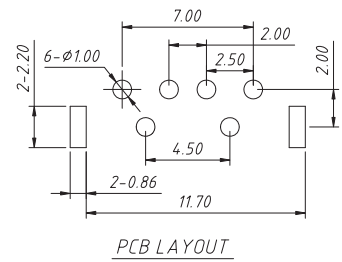
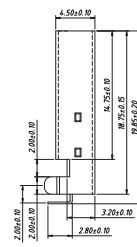
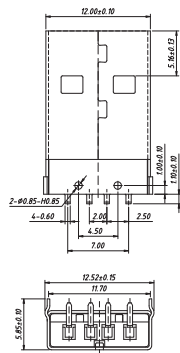
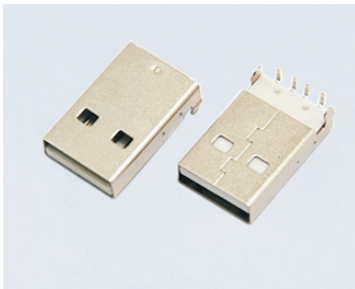
CONN PLUG USB A-MALE IDC



KLS1-1849

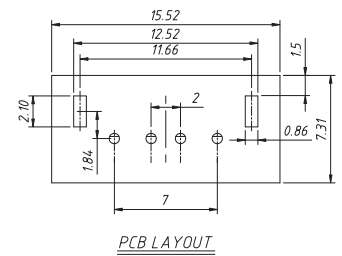
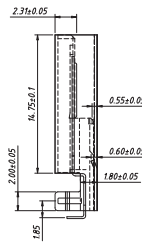
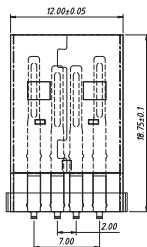
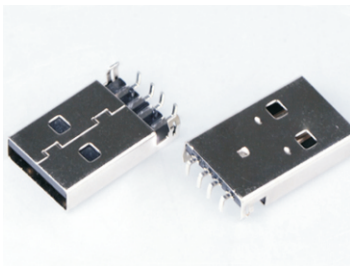


CONN PLUG USB TYPE A MALE DIP R/A MID MOUNT 1.3mm



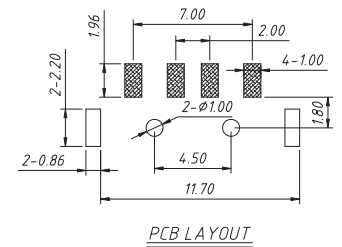
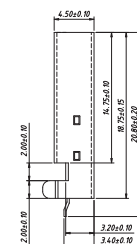
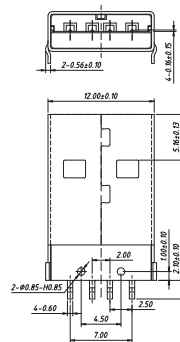
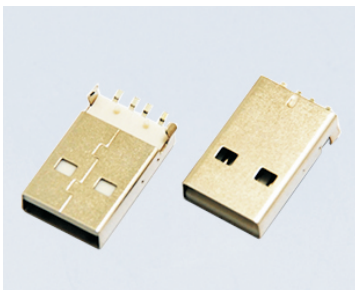
KLS1-180A

CONN PLUG USB A-MALE MID MOUNT 2.7mm



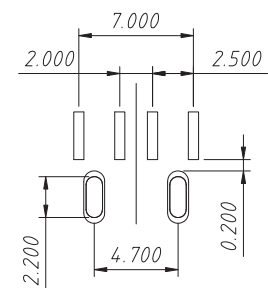
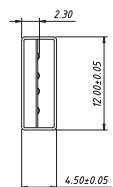
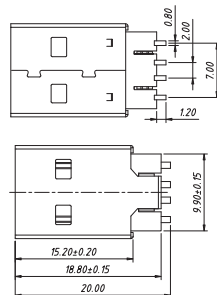
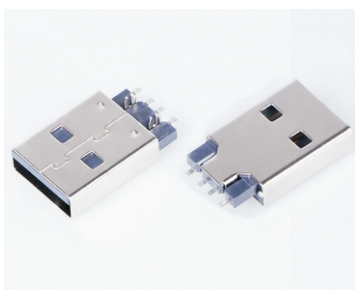
KLS1-1852

CONN PLUG USB TYPE A MALE SMD MID MOUNT 1.3mm



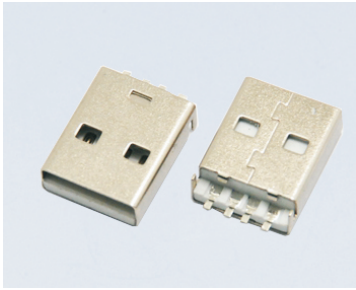
KLS1-180B

CONN PLUG USB TYPE A MALE R/A SMD

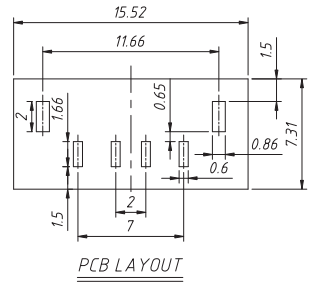
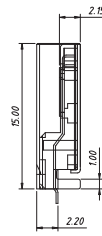
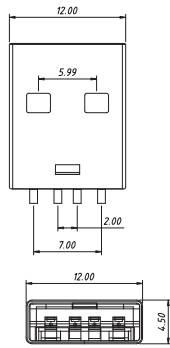


KLS1-1809

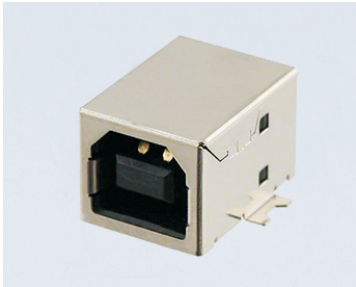
CONN PLUG USB A-MALE MID MOUNT 2.3mm



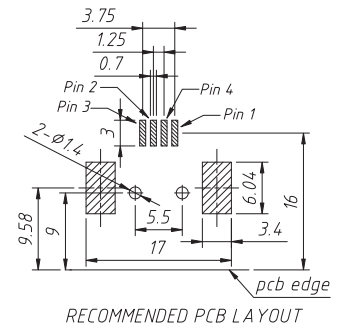
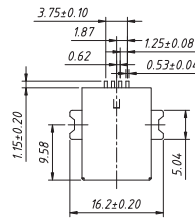
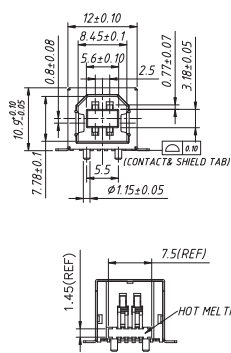
KLS1-1856



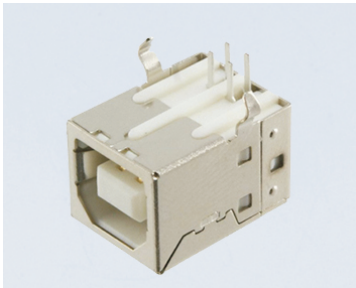
CONN COM TYPE B USB Female SMD



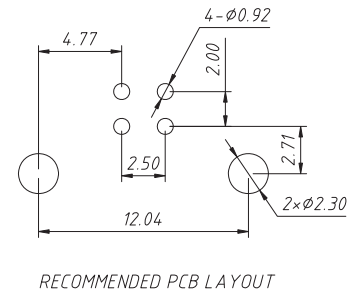
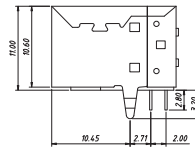
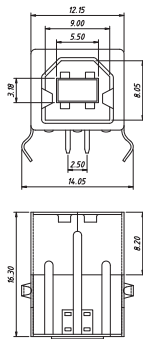
KLS1-156



CONN COM TYPE B USB Female VERT 4POS



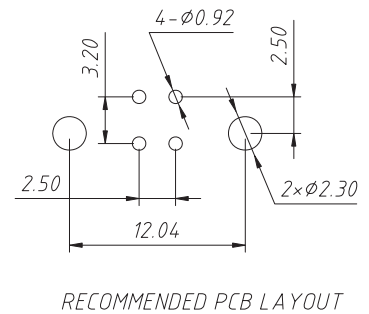
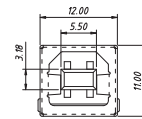
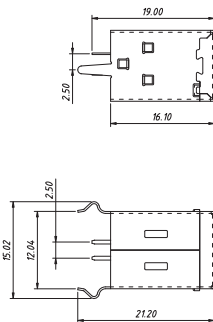
KLS1-151



CONN COM TYPE B USB Female HORZ 4POS



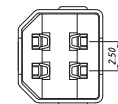
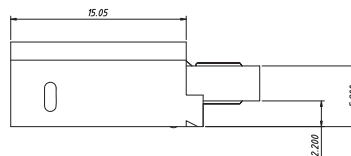
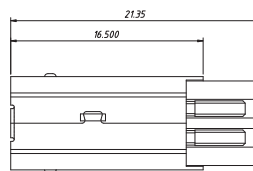
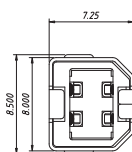
KLS1-152



CONN PLUG USB B-MALE SOLDER



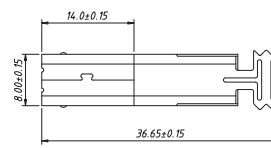
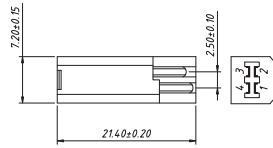
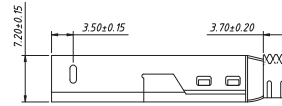
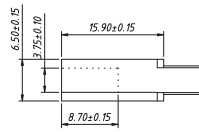
KLS1-192



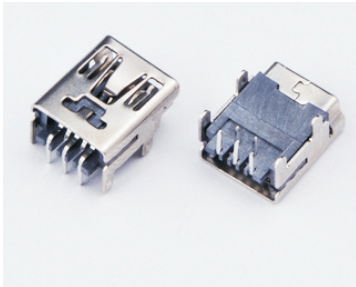
CONN PLUG USB B-MALE SOLDER



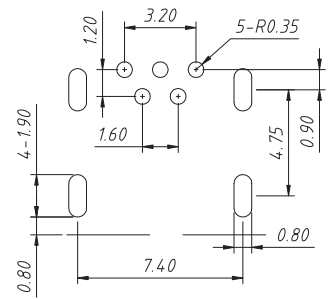
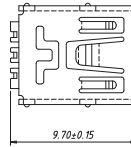
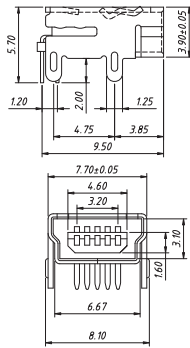
KLS1-184



CONN MINI USB RCPT,TYPE B R/A

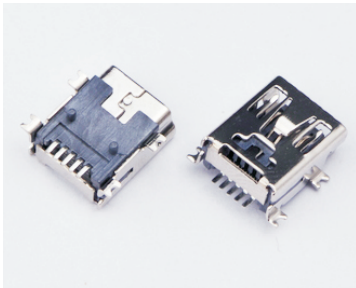


KLS1-229-5FA

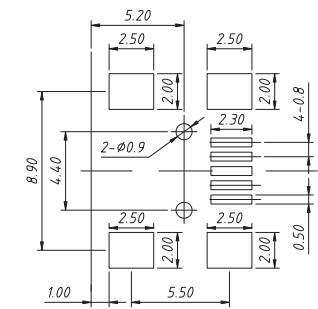
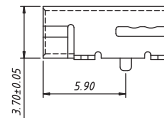
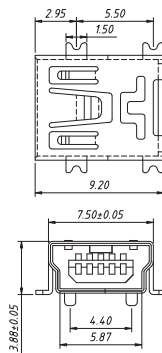


RECOMMENDED PCB LAYOUT

CONN MINI USB RCPT,TYPE B SMD

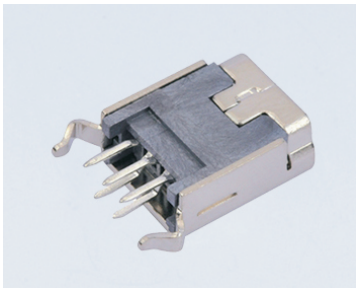


KLS1-229-5FB

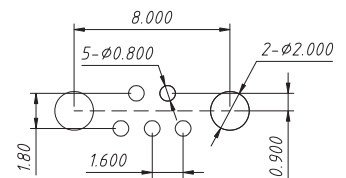
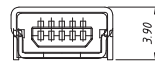
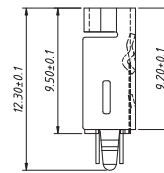
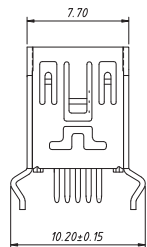


RECOMMENDED PCB LAYOUT

CONN MINI USB RCPT,TYPE B R/A

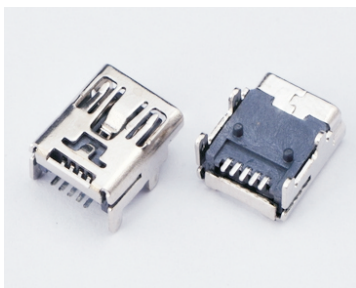


KLS1-229-5FC

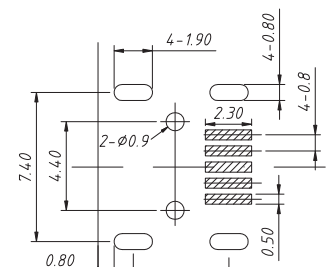
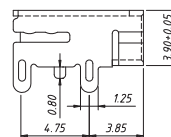
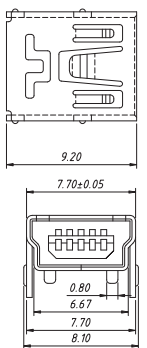


RECOMMENDED PCB LAYOUT

CONN MINI USB RCPT,TYPE B SMD

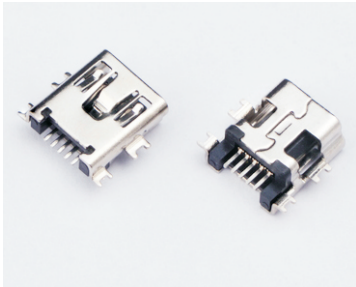


KLS1-229-5FD

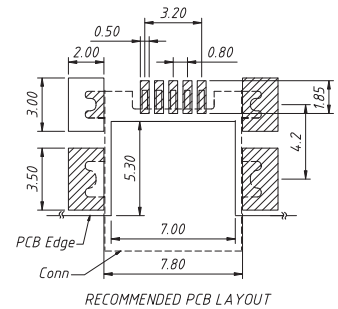
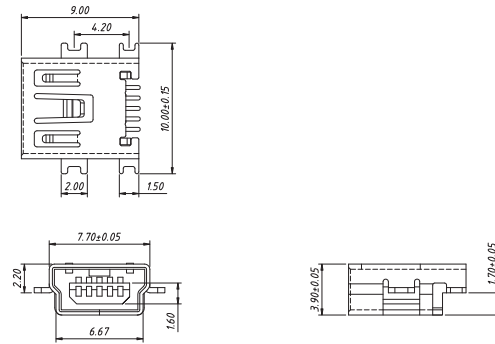


RECOMMENDED PCB LAYOUT

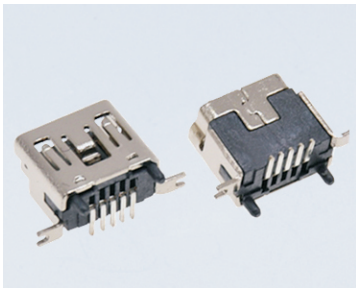
CONN MINI USB RCPT,TYPE B R/A



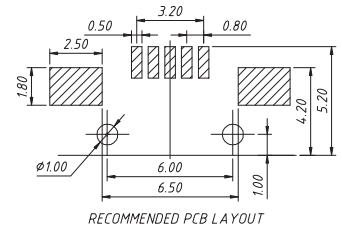
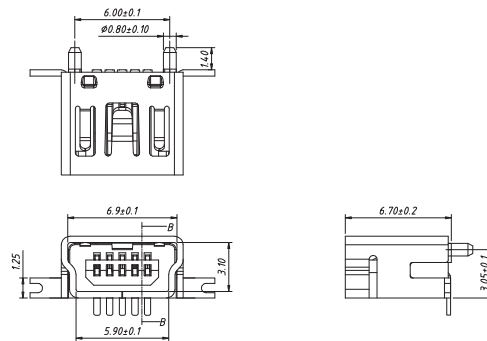
KLS1-229-5FE



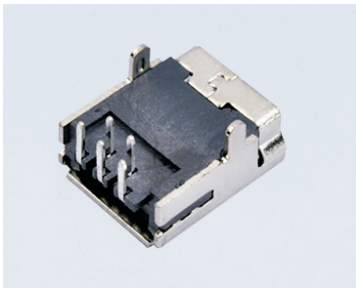
CONN MINI USB RCPT,TYPE B, Vertical SMD



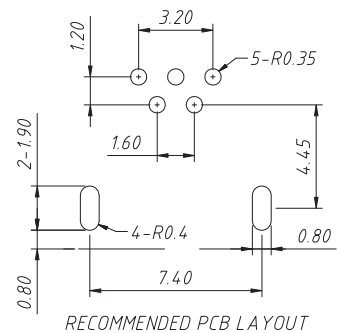
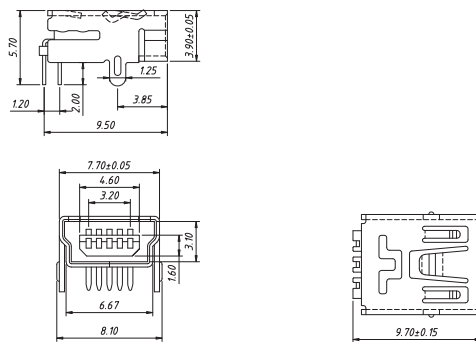
KLS1-229-5FJ



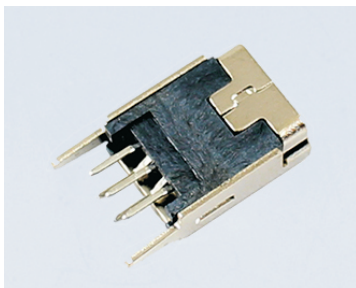
CONN MINI USB RCPT,TYPE B R/A



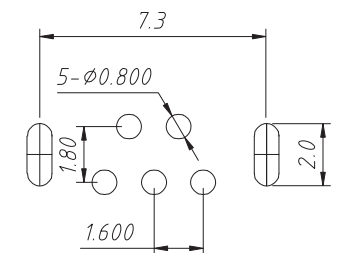
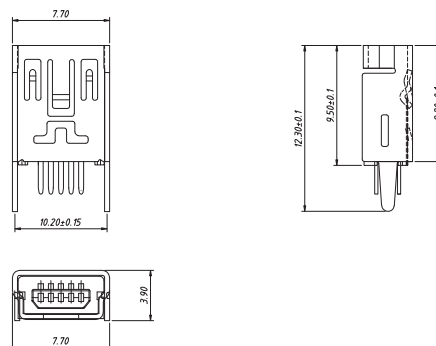
KLS1-229-5FQ



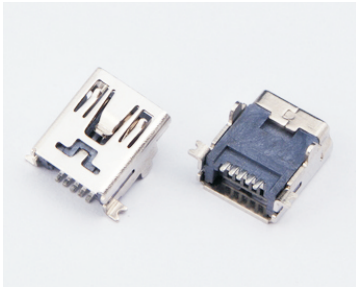
CONN MINI USB RCPT,TYPE B R/A



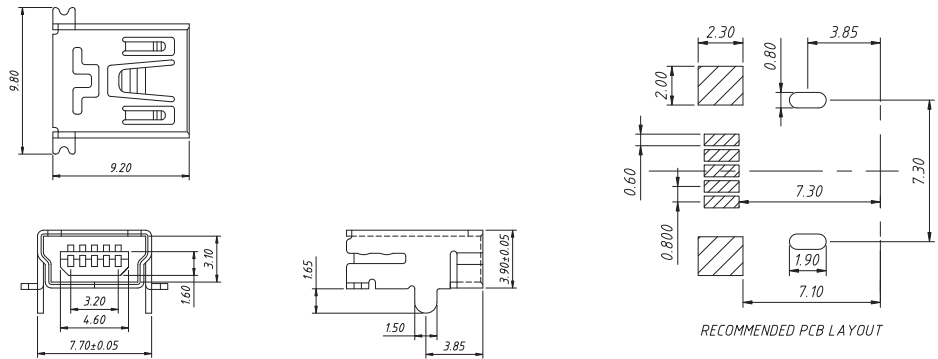
KLS1-229-5FK



CONN MINI USB RCPT,TYPE B SMD



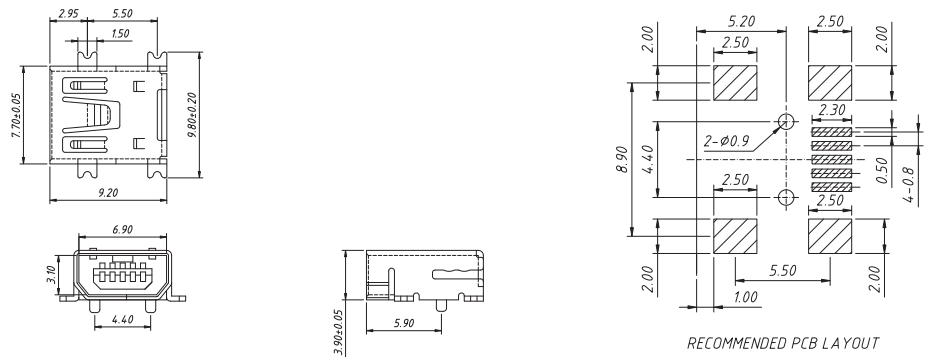
KLS1-229-5FN



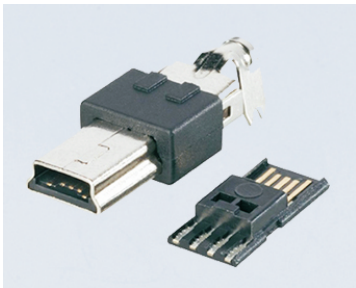
CONN MINI USB RCPT,TYPE AB SMD



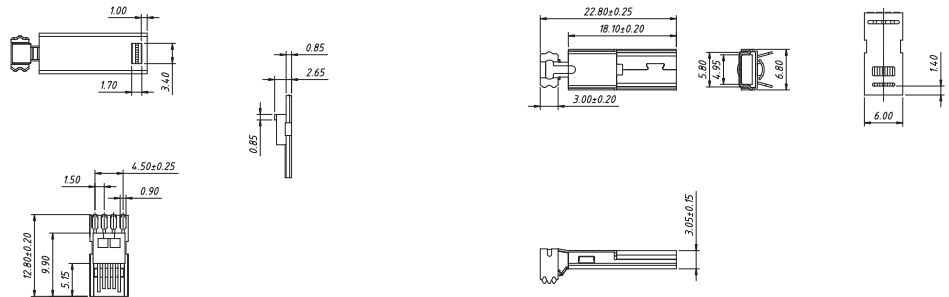
KLS1-229-6FB



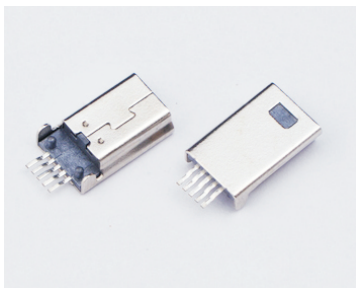
MINI USB TYPE B PLUG CABLE KITS



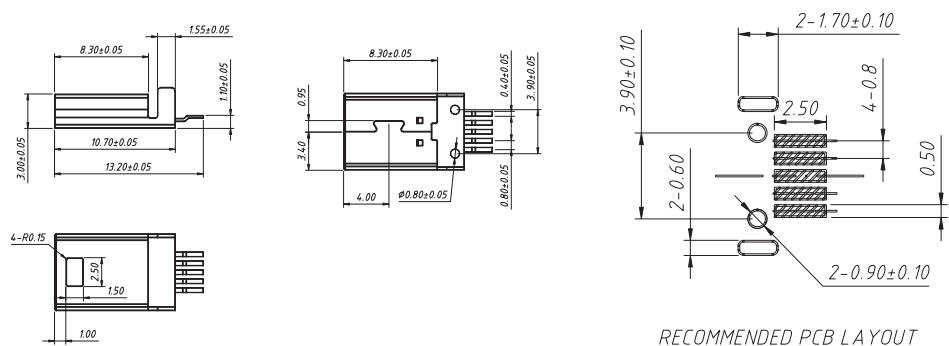
KLS1-232



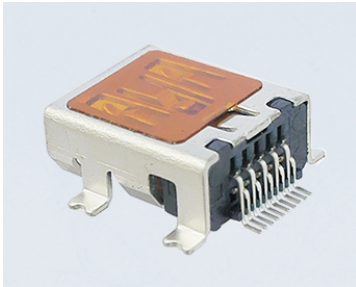
MINI USB TYPE B PLUG Male,SMD,MID MOUNT



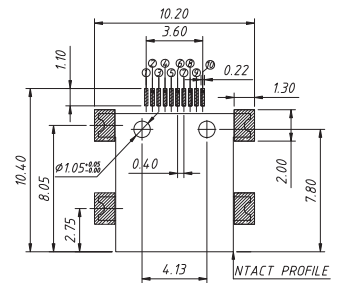
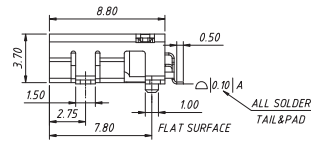
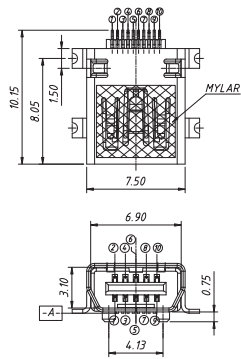
KLS1-229-5MA



CONN MINI USB 10P,TYPE A SMD

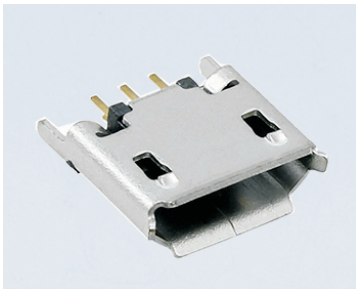


KLS1-229-10FA

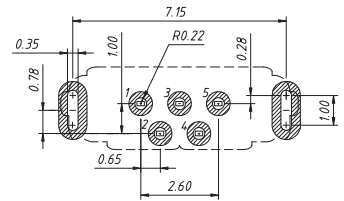
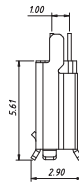
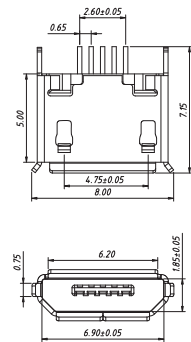


RECOMMENDED PCB LAYOUT
GENERAL TOLERANCES: ±0.05

CONN RCPT 5POS MICRO USB Straight



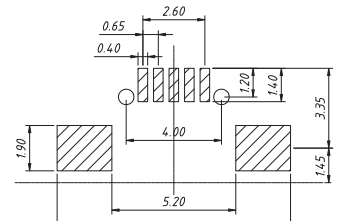
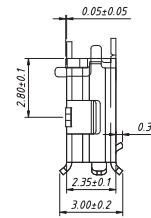
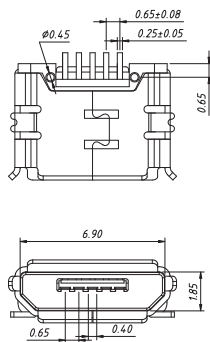
KLS1-2233B



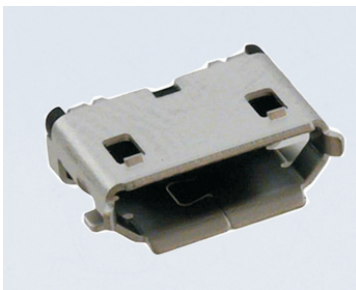
CONN RCPT 5POS MICRO USB SMD



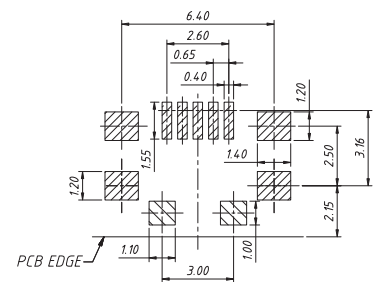
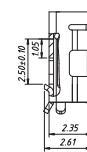
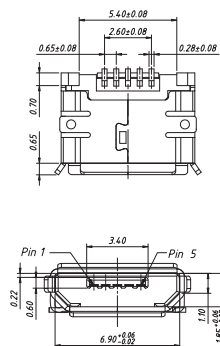
KLS1-233



CONN RCPT 5POS MICRO USB SMD



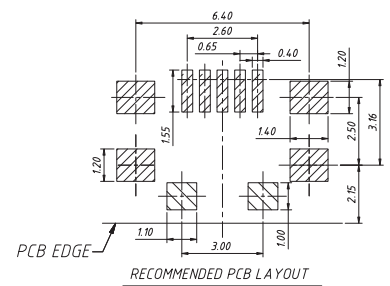
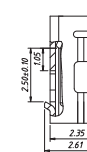
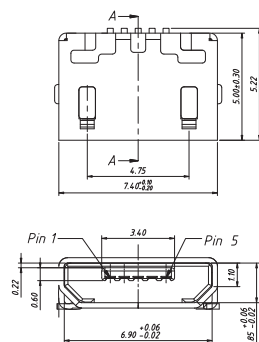
KLS1-236



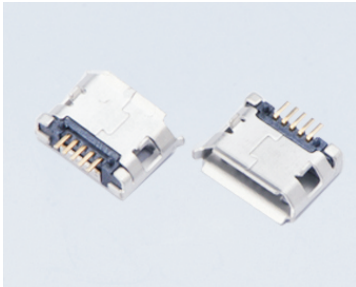
CONN RCPT 5POS MICRO USB SMD



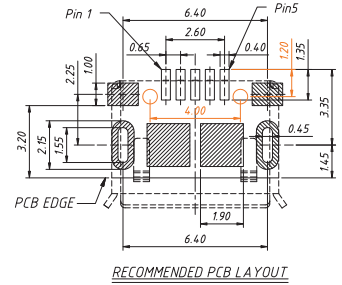
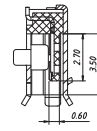
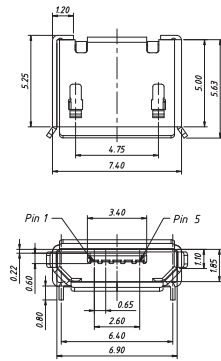
KLS1-4241



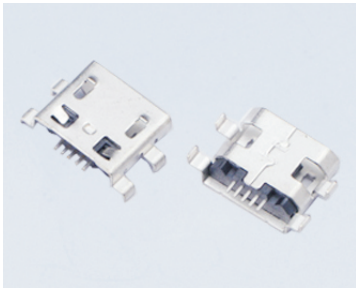
CONN RCPT 5POS MICRO USB SMD



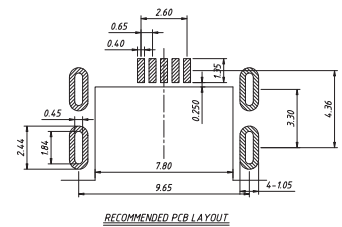
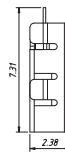
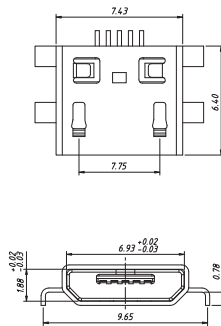
KLS1-237



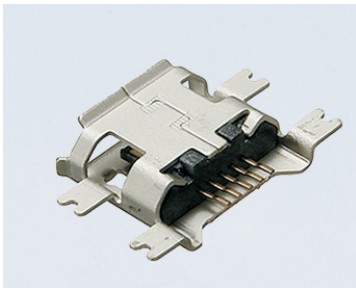
CONN RCPT 5POS MICRO USB DIP, MID MOUNT



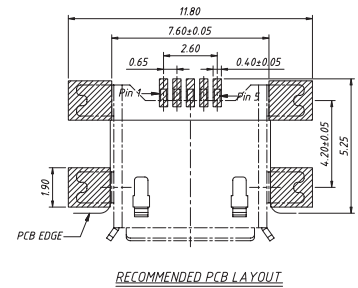
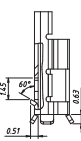
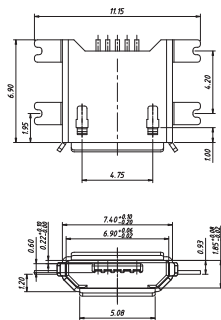
KLS1-4238



CONN RCPT 5POS MICRO USB SMD, MID MOUNT



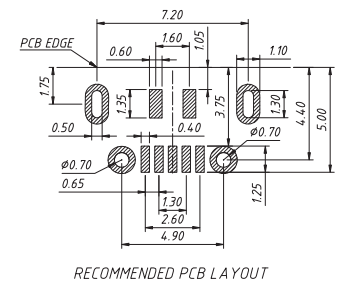
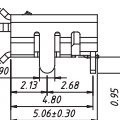
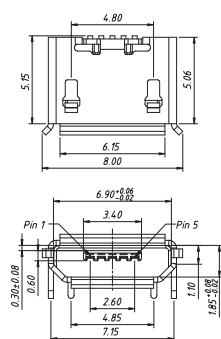
KLS1-4240



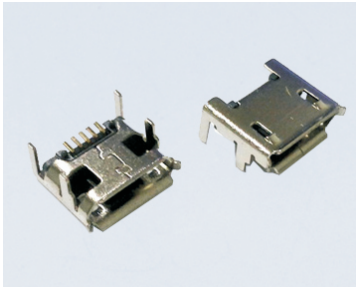
CONN RCPT 5POS MICRO USB SMD



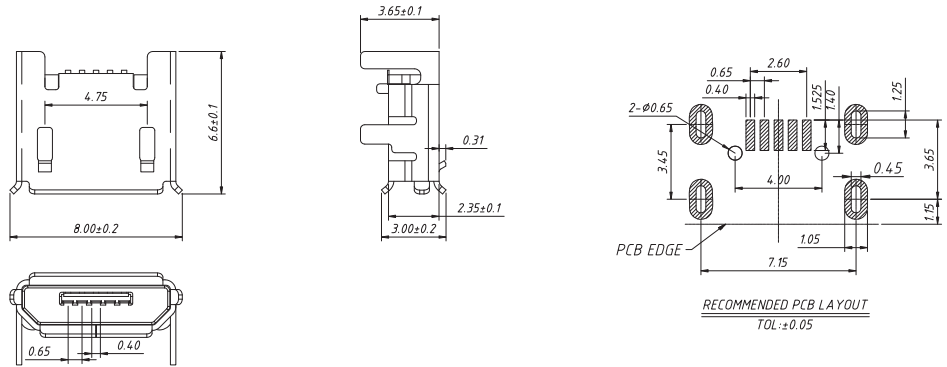
KLS1-238



CONN RCPT 5POS MICRO USB SMD



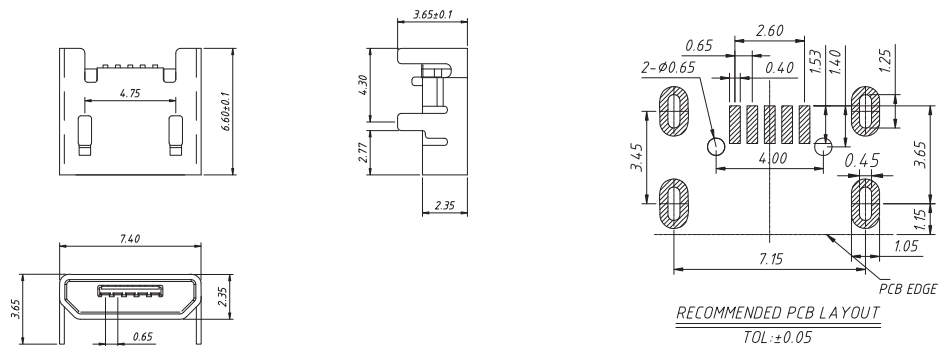
KLS1-4242



CONN RCPT 5POS MICRO USB SMD



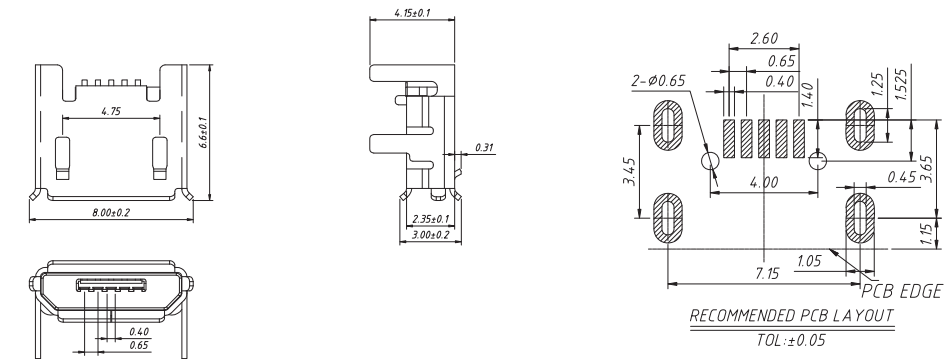
KLS1-4243



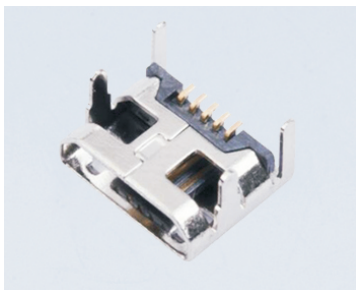
CONN RCPT 5POS MICRO USB SMD



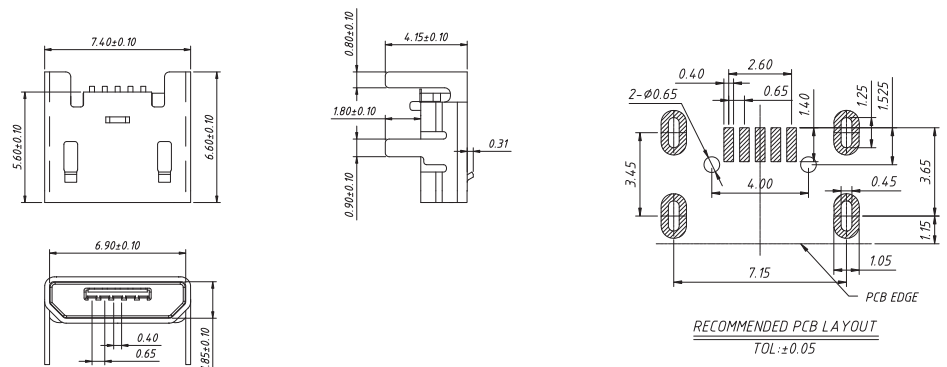
KLS1-4246



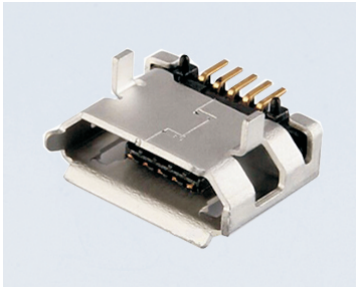
CONN RCPT 5POS MICRO USB SMD



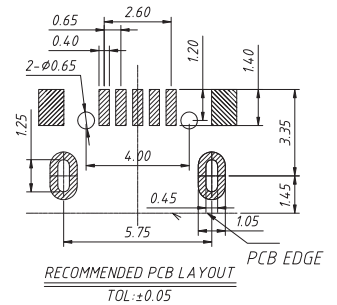
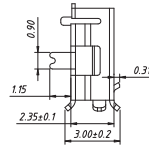
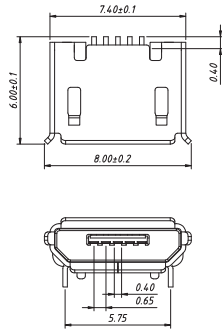
KLS1-4244



CONN RCPT 5POS MICRO USB DIP 5.9mm



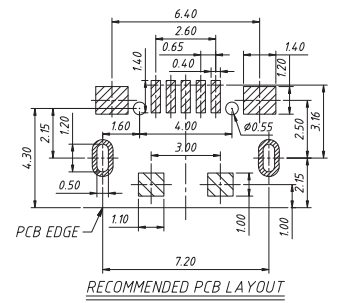
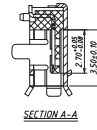
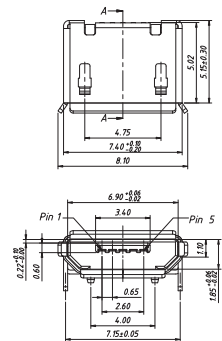
KLS1-4245



CONN RCPT 5POS MICRO USB DIP 7.2mm



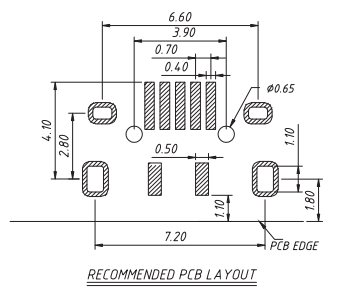
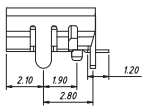
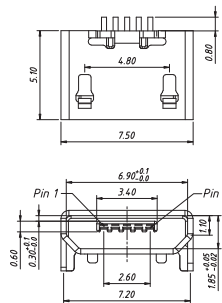
KLS1-4247



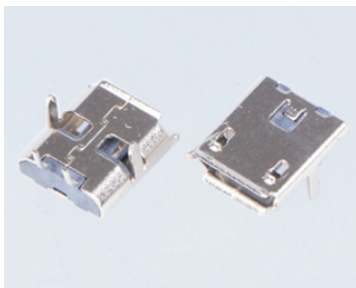
CONN RCPT 5POS MICRO USB DIP 7.2mm



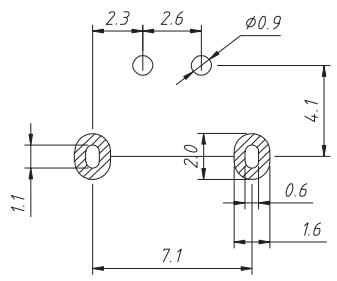
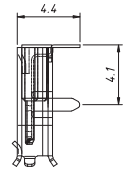
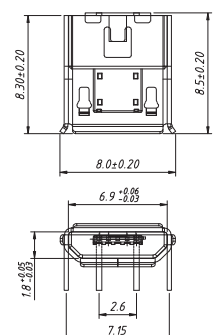
KLS1-4248



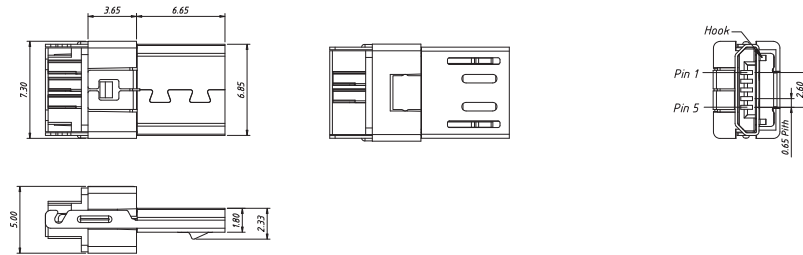
CONN MICRO USB 2P R/A DIP



KLS1-4250

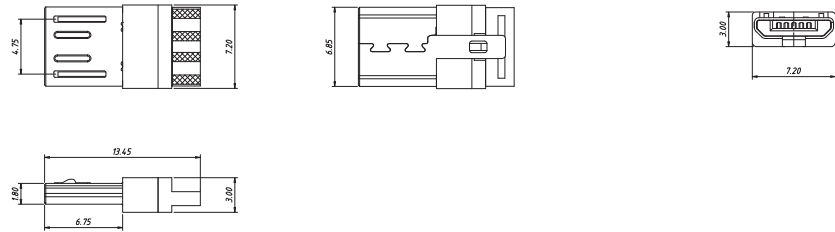
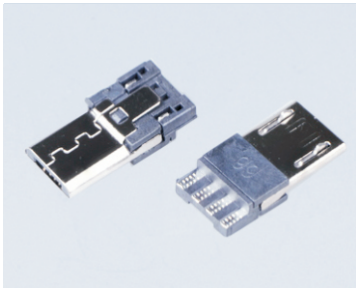


CONN PLUG MICRO USB TYPE B solder T5.0



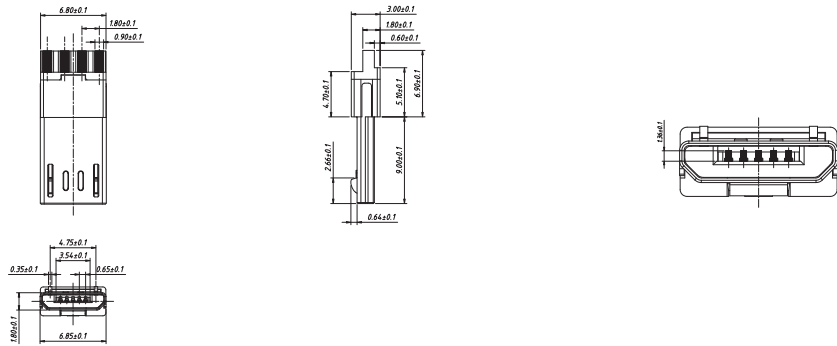
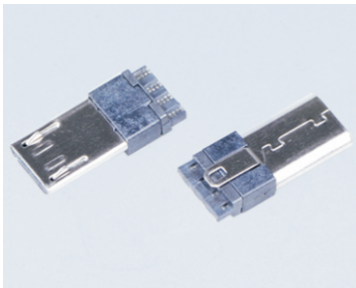
KLS1-235-0

CONN PLUG MICRO USB TYPE B Solder T3.0, L6.8mm



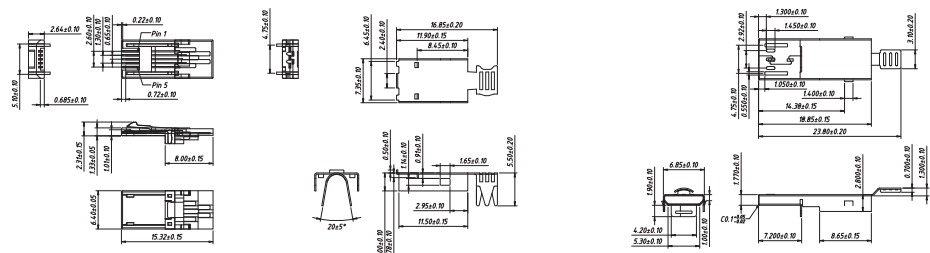
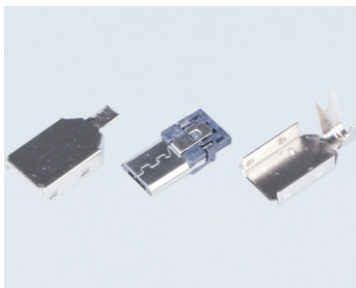
KLS1-235-1

CONN PLUG MICRO USB TYPE B Solder T3.0, L8.8mm



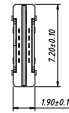
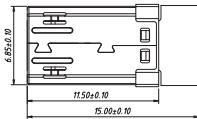
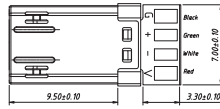
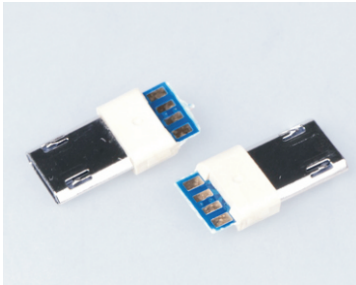
KLS1-235-2

CONN PLUG MICRO USB TYPE B Solder



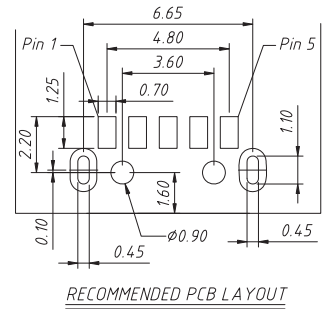
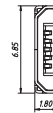
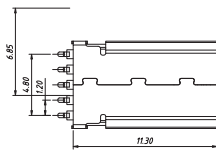
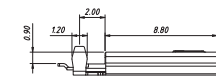
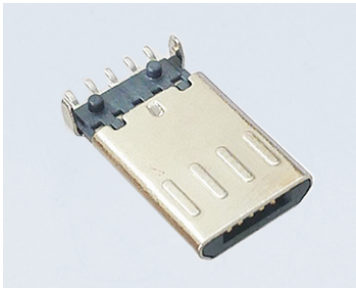
KLS1-235-3

CONN PLUG MICRO USB Solder



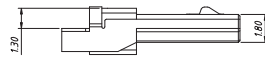
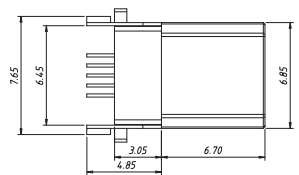
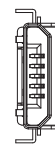
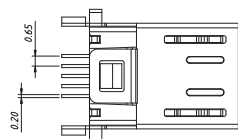
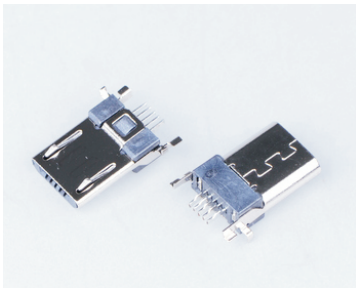
KLS1-235-5

CONN PLUG MICRO USB TYPE B PCB MID MOUNT



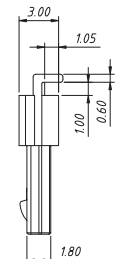
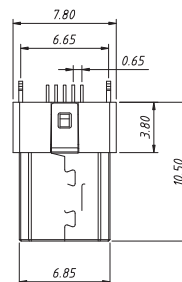
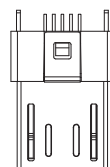
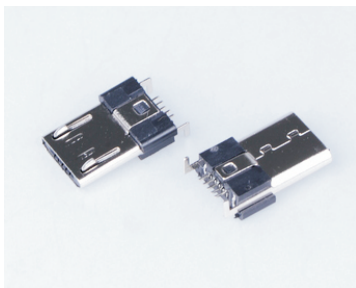
KLS1-236-5M1

CONN PLUG MICRO USB TYPE B SMD



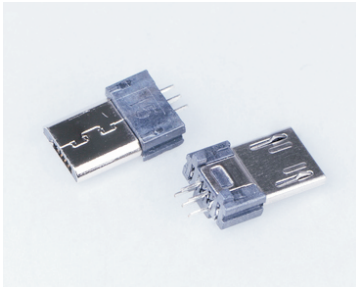
KLS1-236-5M2

CONN PLUG MICRO USB TYPE B SMD

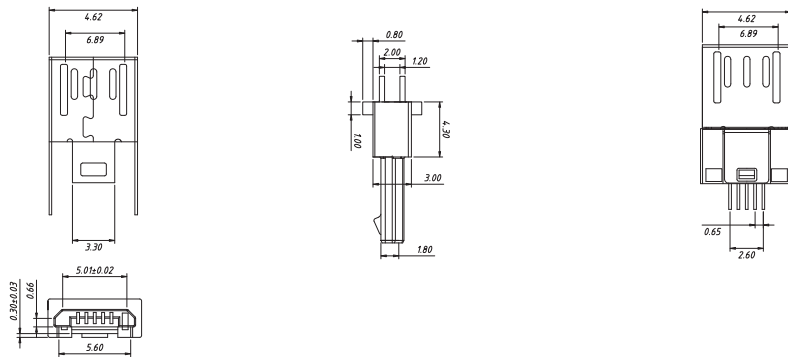


KLS1-236-5M3

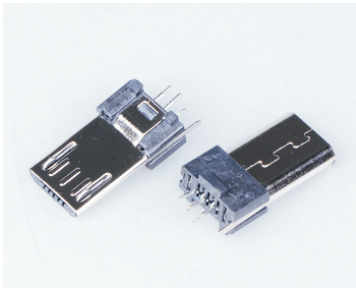
CONN PLUG MICRO USB TYPE B CLIP L6.8



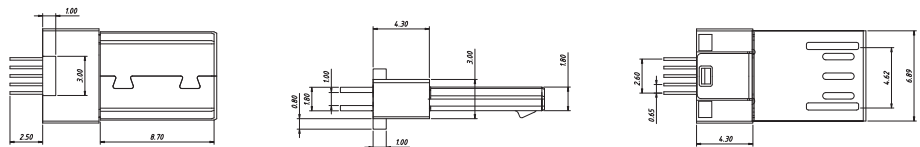
KLS1-236-5M6



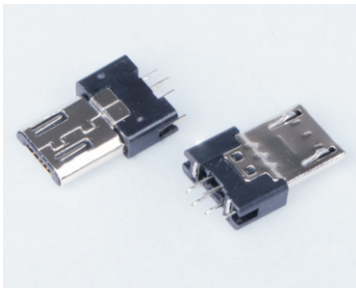
CONN PLUG MICRO USB TYPE B CLIP L8.8



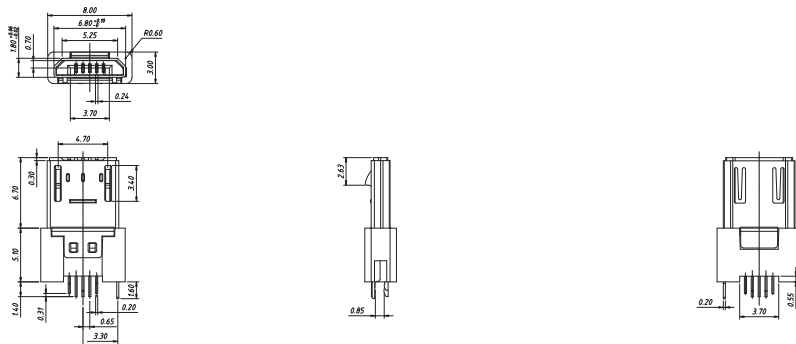
KLS1-236-5M7



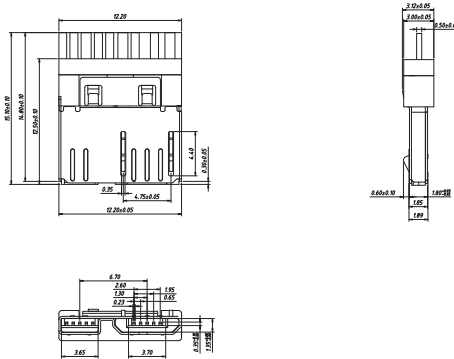
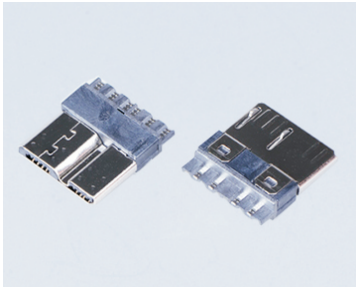
CONN PLUG MICRO USB TYPE B CLIP



KLS1-236-5M8

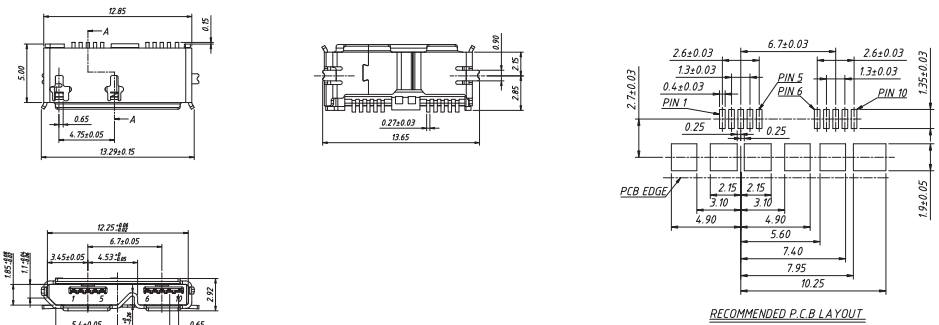
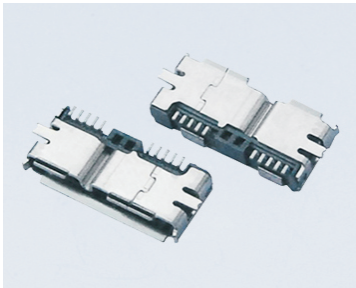


MICRO USB 3.0 PLUG, 10P Solder



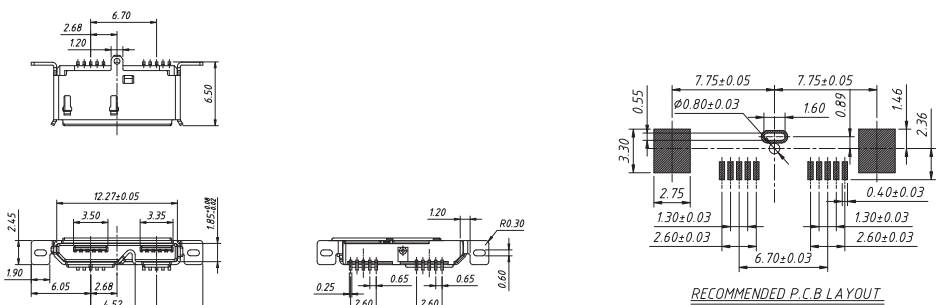
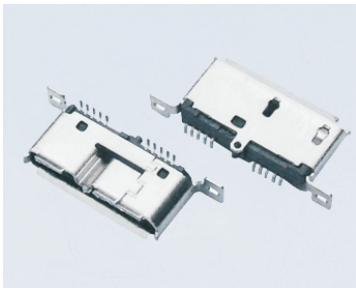
KLS1-234-10M1

MICRO USB 3.0 Female, 10P SMD



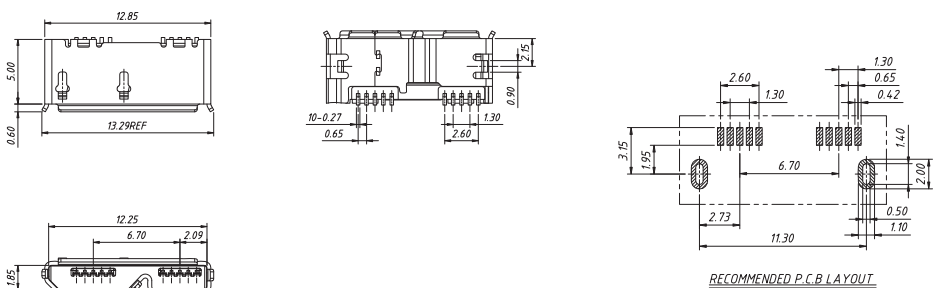
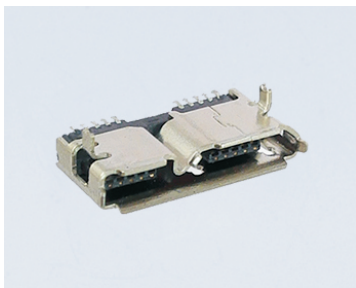
KLS1-234-10F1

MICRO USB 3.0 Female, 10P Vertical SMD



KLS1-234-10F2

MICRO USB 3.0 Female, 10P SMD



KLS1-234-10F3



Your Best Components Sourcing

KLS 1998
Aluminum Electronic Capacitors
KLS ELECTRONIC CO., LTD.

www.kncls.com
 Email: sales@cnkls.com
 Tel: 0086-574-86828566

KLS 1998
ANTENNA 55MHz-5.8GHz
NINGBO KLS ELECTRONIC CO., LTD.

www.klsele.com
 Email: sales@klsele.com
 Tel: 0086-574-86828566

KLS 1998
Acoustic Components
KLS ELECTRONIC CO., LTD.

www.kncls.com
 Email: sales@cnkls.com
 Tel: 0086-574-86828566

KLS 1998
Crystals Oscillators Resonators
NINGBO KLS ELECTRONIC CO.,LTD.

ELECTRONICS
 Your Best Components Sourcing

Science And Technology

www.kncls.com
 Email: sales@cnkls.com
 Tel: 0086-574-86828566

KLS 1998
Fans, Motors, Thermal Management
NINGBO KLS ELECTRONIC CO.,LTD.

FAN
 Technology in Motion

TRANSFORMING THE FUTURE THROUGH CHANGE
FAN MANUFACTURING

www.kncls.com
 Email: sales@cnkls.com
 Tel: 0086-574-86828566

KLS 1998
WATERPROOF CONNECTOR CABLE ASSEMBLY
NINGBO KLS ELECTRONIC CO.,LTD.

www.klsele.com
 Email: sales@klsele.com
 Tel: 0086-574-86828566

KLS 1998
Magnetics - Transformer, Coil, Choke Inductor Components
KLS ELECTRONIC CO., LTD.

The Best Electronic Sourcing

www.kncls.com
 Email: sales@cnkls.com
 Tel: 0086-574-86828566

KLS 1998
FPC Connectors
NINGBO KLS ELECTRONIC CO.,LTD.

FPC
 FPC / FFC

www.kncls.com
 Email: sales@cnkls.com
 Tel: 0086-574-86828566

KLS ELECTRONIC CO., LTD.

www.kncls.com
 Email: sales@cnkls.com
 Tel: 0086-574-86828566

KLS 1998
Ethernet Connector Catalogue
KLS ELECTRONIC CO., LTD.

www.klsele.com
 Email: sales@klsele.com
 Tel: 0086-574-86828566

KLS 1998
Tantalum Capacitors Aluminum Electronic Capacitors Film Capacitor Ceramic Capacitor
KLS ELECTRONIC CO., LTD.

www.kncls.com
 Email: sales@cnkls.com
 Tel: 0086-574-86828566

KLS 1998
Terminal Blocks
NINGBO KLS ELECTRONIC CO.,LTD.

www.kncls.com
 Email: sales@cnkls.com
 Tel: 0086-574-86828566

KLS 1998
Aluminum Electronic Capacitors
KLS ELECTRONIC CO., LTD.

www.kncls.com
 Email: sales@cnkls.com
 Tel: 0086-574-86828566

KLS 1998
Led Connectors And Accessories
 www.klsele.com

KLS ELECTRONIC CO.,LTD.



■ WWW.CNKLS.COM ■ WWW.KLSELE.COM

KLS ELECTRONIC CO.,LTD.
Tel: 0574-86828566

Email: sales@cnkls.com
Fax: 0086 574 86824882