



NINGBO KLS ELECTRONIC CO.,LTD.

Card connectors



Card Connector Applications



WWW.KLSELE.COM
Email:sales@cnkls.com
Email:sales@klsele.com
Tel:0086-574-86828566

COMPANY PROFILE

KLS ELECTRONIC CO; LTD

Your Best Electronic Components Sourcing!

KLS Electronic Co., Ltd. was founded in 2002.

KLS is a comprehensive trade enterprise with import and export of electronic products in China. The main business line of the company include importing and exporting of electronic, elements and products, processing with supplied materials, samples and blueprints, sales & purchase agents, Searching for customer non-standard goods amongst vast products data sheet.

KLS has been adhering to the principle of serving the customers with high-quality electronics products, which 80% of products have UL, CSA, VDE, CE and ROHS certificate. By strengthening the operation and management and placing equal emphasis on marketing process, our assistant of good service, KLS has gained customers from USA, RUSSIA, UK, BRAZIL, SWEDEN ETC.....

KLS memo is "Meet customers need with best price and best quality!"

Each year we attended four to five Electronic exhibitions all over the world for introduce. You are searching for creditable and professional supplier to work with; we are also looking for sincerely and long-term customers.

Once we find each other, we could make rapid progress together!

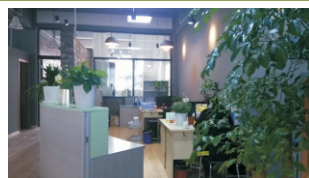
Since from 2015 KLS invested the production line of Ethernet connectors and LED connectors . In 2017 , KLS invested SMT assembly production line and started to provide EMS service



G/M-
LiPing Xiong

HISTORY OF KLS

- 2002: KLS was established
- 2003: KLS enter Russia market first time
- 2004: KLS attend Muhich exhibition, enter Europe market
- 2005: KLS built purchase department
- 2006: Wireless products OEM project
- 2007: Power meter project OEM
- 2008: Built logistic department
- 2009: Start cable assembly department
- 2010: ISO9001:2008
- 2011: KLS new website
- 2012: Ten years of celebration
- 2013: Move to new office with warehouse
- 2014: ERP management system
- 2015: Production line Ethernet Connector
- 2015: Auto-Production line of LED Lighting Connector
- 2017: SMT assembly production line / EMS



KLS ELECTRONIC CO.,LTD.



www.cnkls.com
www.klsele.com

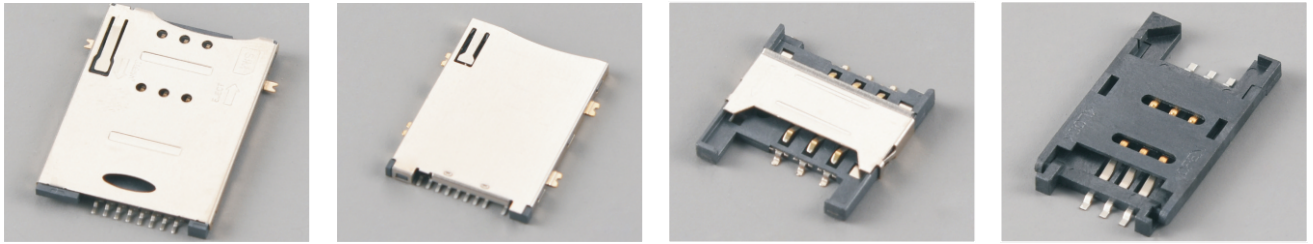
Tel: +86-0574-86828566
Fax: +86-0574-86824882



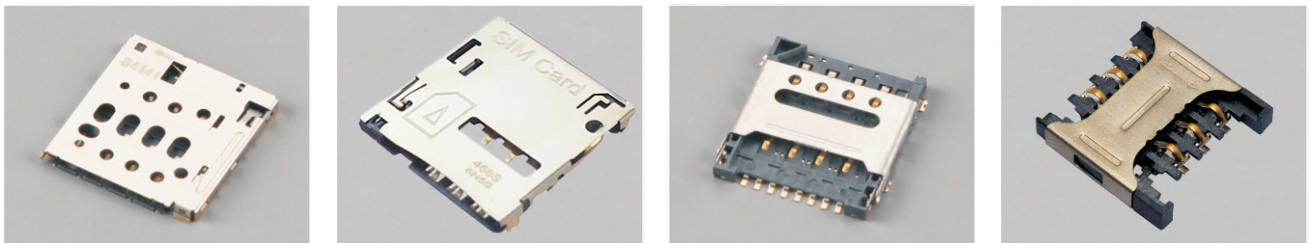
Add: NO.8-1 Rongxia Rd, Xiapu Shanqian Industrial Area Beilun Ningbo Zhejiang, China
Postal: 315807 315800

PRODUCT CONTENTS

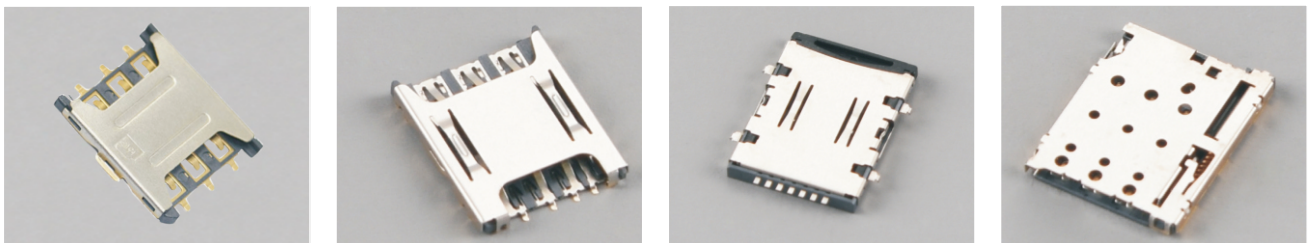
■ SIM CARD CONNECTOR /001-007



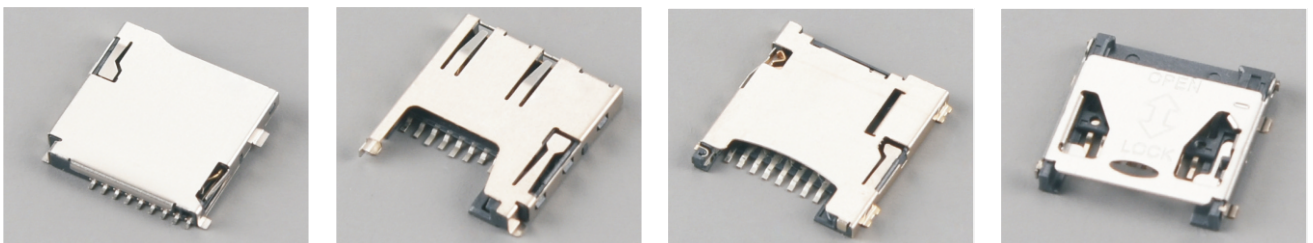
■ MICRO SIM CONNECTOR /008-012



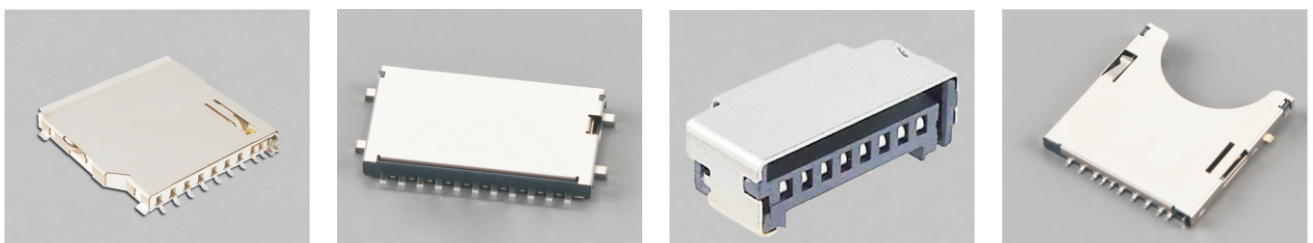
■ NANO SIM CONNECTOR /013-015



■ MICRO SD CARD CONNECTOR /016-020

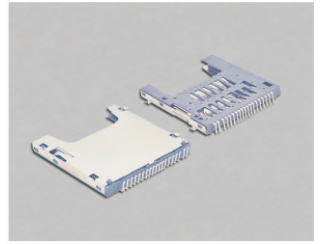
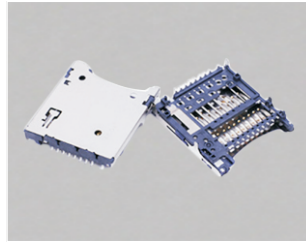
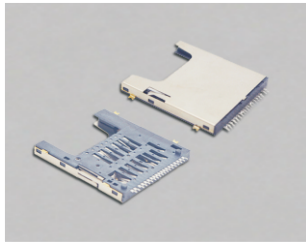
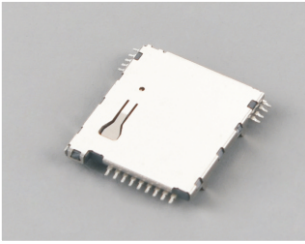


■ SD CARD CONNECTOR /021-022

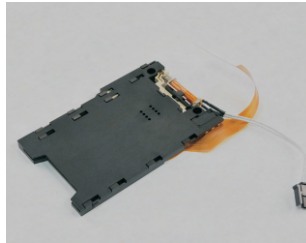
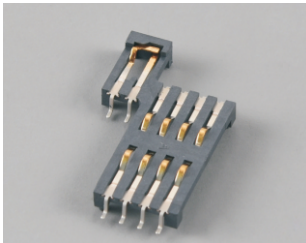
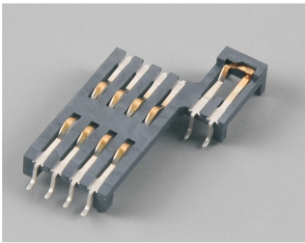


PRODUCT CONTENTS

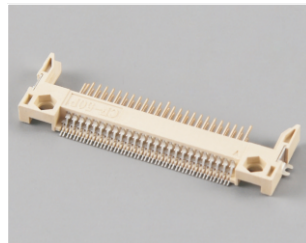
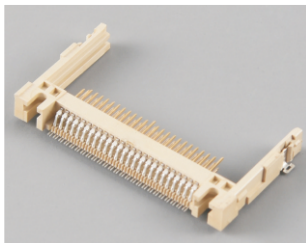
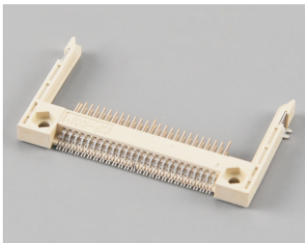
■ SD 4.0 CARD CONNECTOR / 023-024



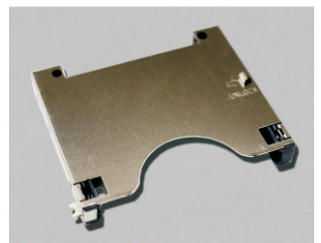
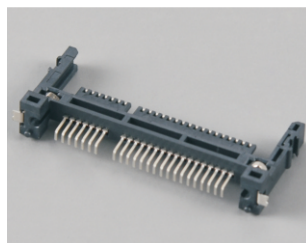
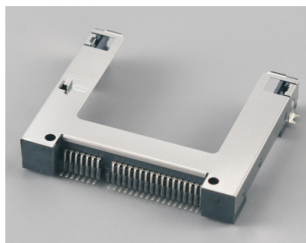
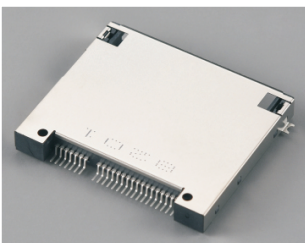
■ SMART CARD CONNECTOR / 025



■ CF CARD CONNECTOR / 026

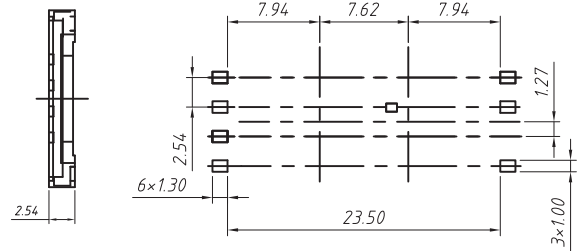
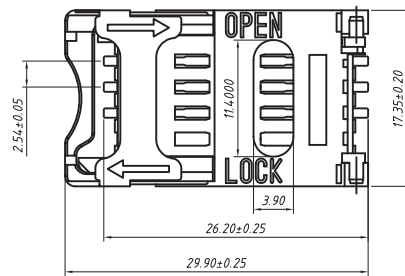
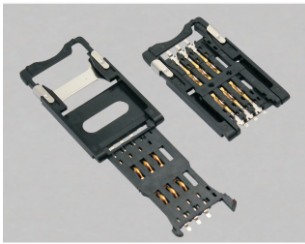


■ CFAST HOST CONNECTOR / 027-028



SIM Card Connector

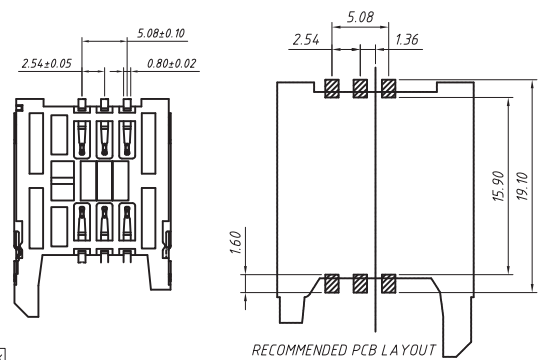
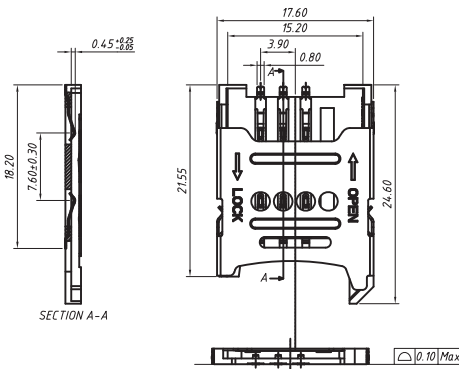
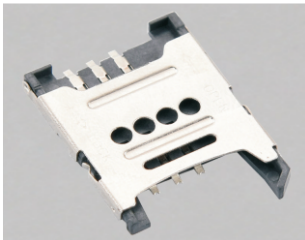
SIM CARD CONN,Hinged type, 6P & 8P,H2.54mm,SMD



RECOMMENDED PCB LAYOUT

KLS1-SIM-012

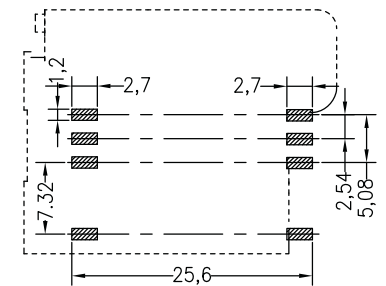
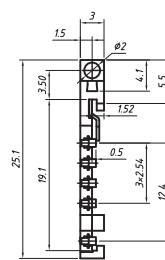
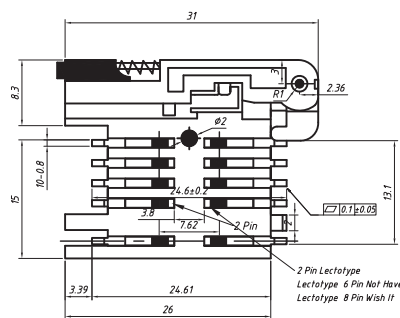
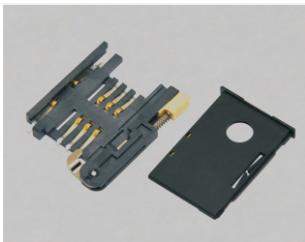
SIM CARD CONN,Hinged type, 6P,H1.8mm



RECOMMENDED PCB LAYOUT

KLS1-SIM-018A

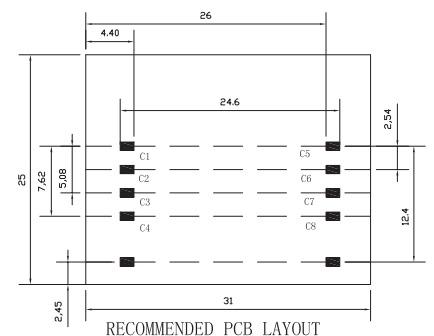
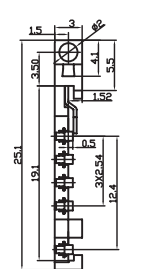
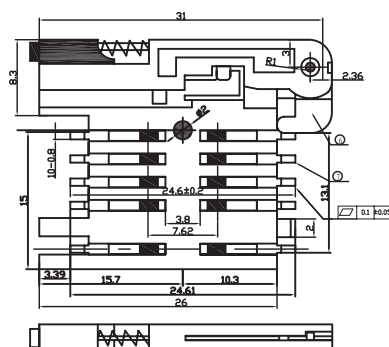
SIM CARD CONN;PUSH PUSH R/A,6+2P ,SMD with CD Pin



Recommended P.C.B Layout(Top Side)
(PCB BOARD TOLERANCE±0.05)

KLS1-SIM-014-6P-R

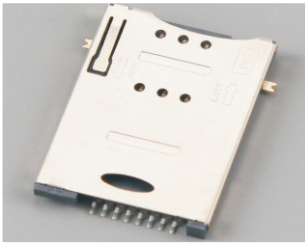
SIM CARD CONN;PUSH PUSH R/A,8P ,SMD with CD Pin



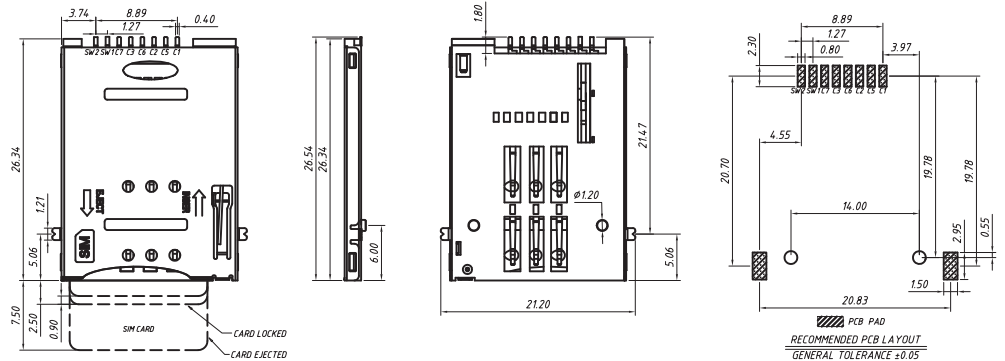
RECOMMENDED PCB LAYOUT

KLS1-SIM-014-8P

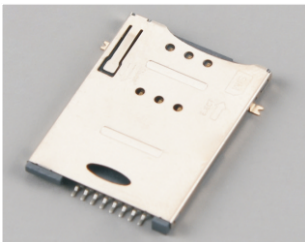
SIM CARD CONN; PUSH PUSH, 6+2P, H1.85mm, SMD with CD Pin, with Post



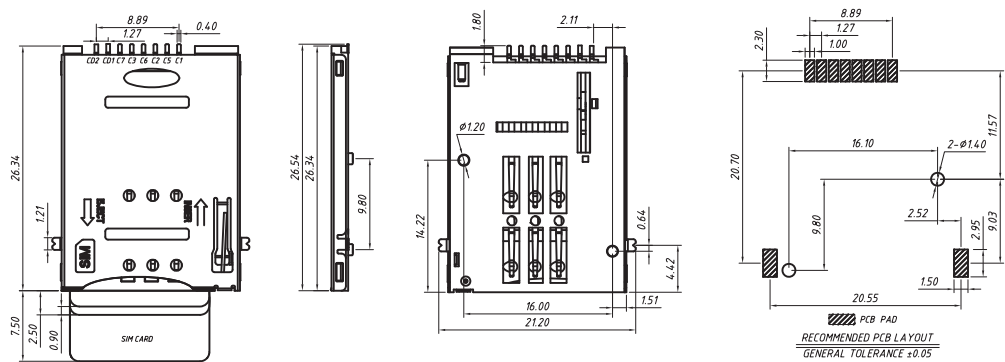
KLS1-SIM-030F



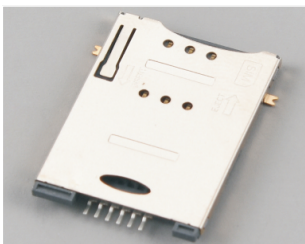
SIM CARD CONN; PUSH PUSH, 6+2P, H1.85mm, SMD with CD Pin, with Post



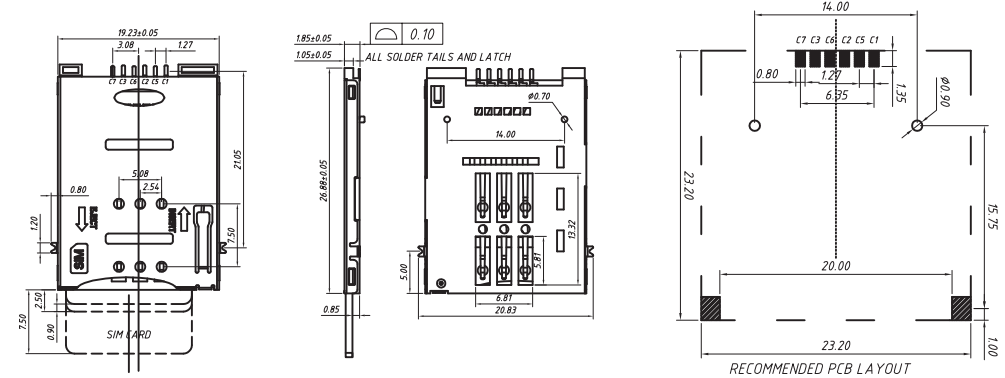
KLS1-SIM-030D



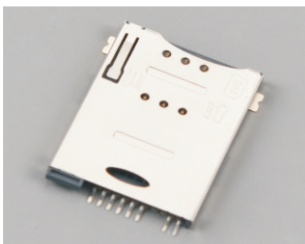
SIM CARD CONN; PUSH PUSH, 6P, H1.85mm, SMD



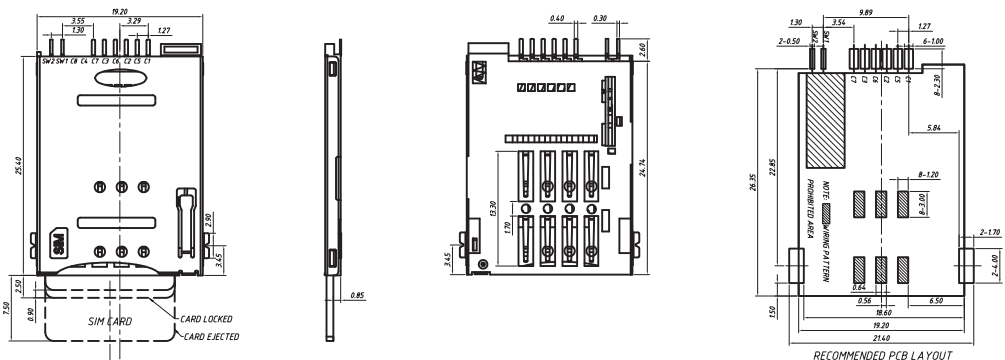
L-KLS1-SIM-073A



SIM CARD CONN; PUSH PUSH, 6+2P, H1.85mm, SMD with CD Pin

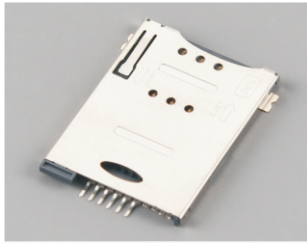


KLS1-SIM-064

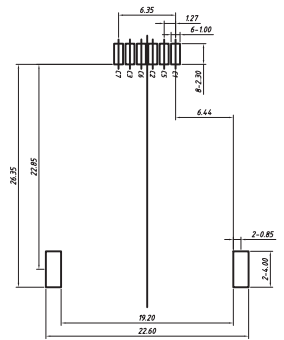
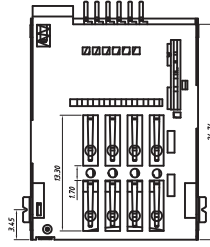
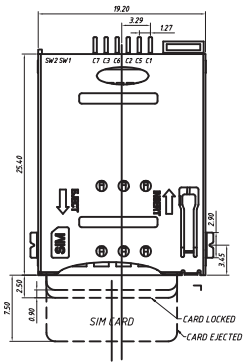


SIM Card Connector

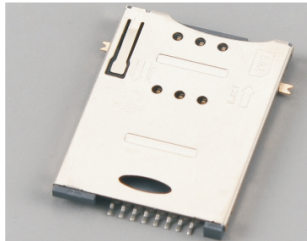
SIM CARD CONN; PUSH PUSH, 6P, H1.85mm, SMD



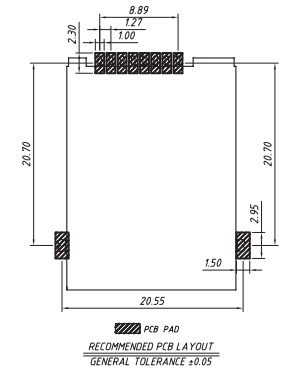
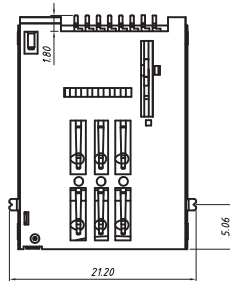
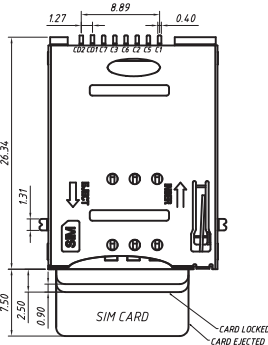
KLS1-SIM-087



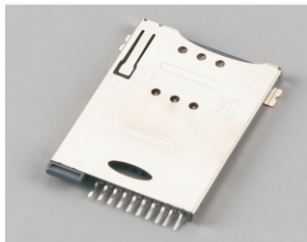
SIM CARD CONN; PUSH PUSH, 6+2P, H1.85mm, SMD with CD Pin



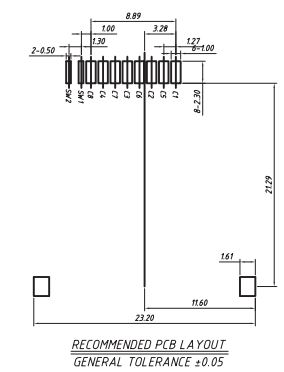
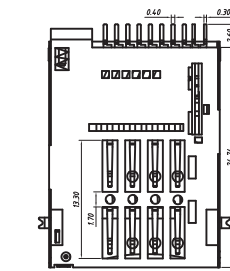
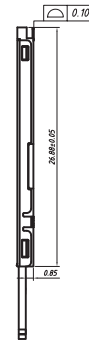
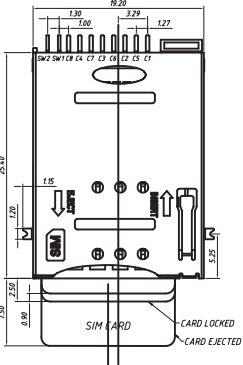
KLS1-SIM-030



SIM CARD CONN; PUSH PUSH, 8+2P, H1.85mm, SMD with CD Pin



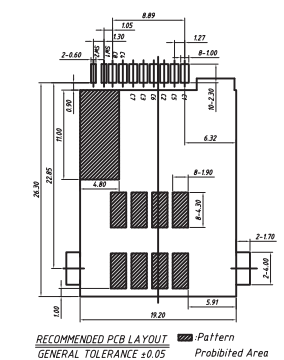
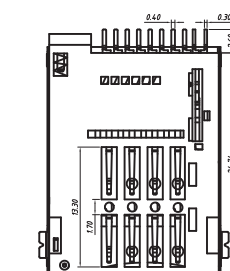
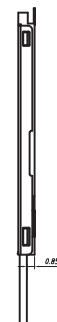
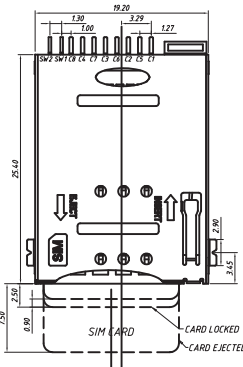
KLS1-SIM-085



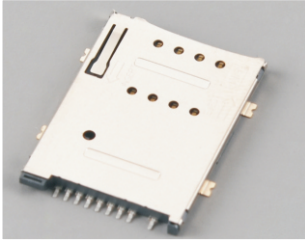
SIM CARD CONN; PUSH PUSH, 8P, H1.85mm, SMD with CD Pin



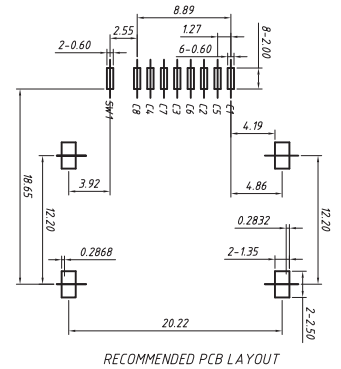
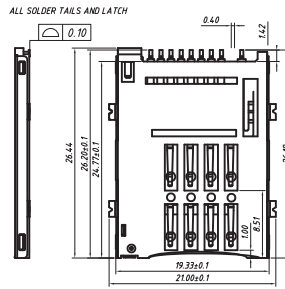
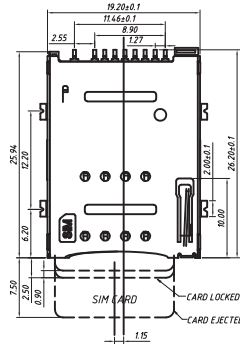
KLS1-SIM-085A



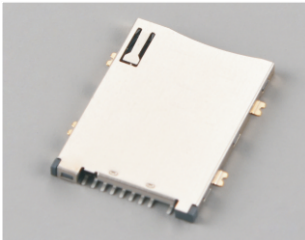
SIM CARD CONN; PUSH PUSH, 8+1P, H1.85mm, SMD with CD Pin



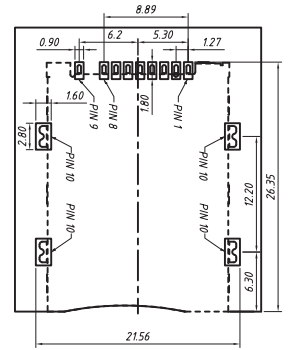
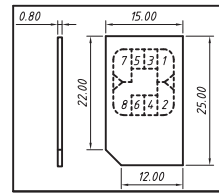
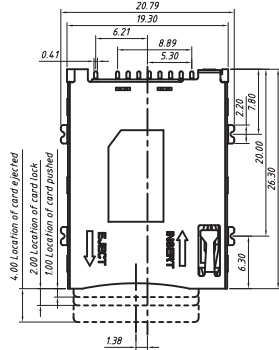
KLS1-SIM-074A



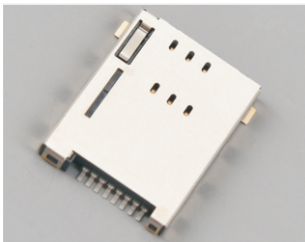
SIM CARD CONN; PUSH PUSH, 8+1P, H1.9mm, SMD with CD Pin



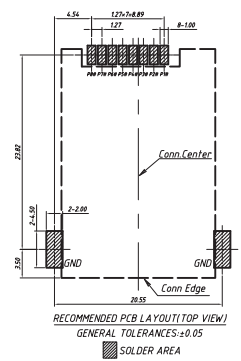
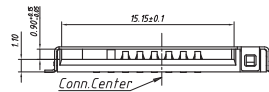
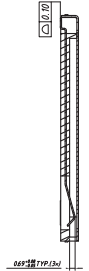
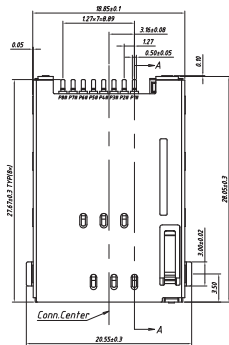
KLS1-SIM-074B



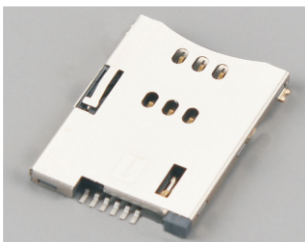
SIM CARD CONN; PUSH PUSH, 6+2P, H2.2mm, SMD with CD Pin



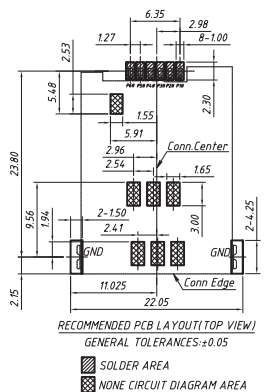
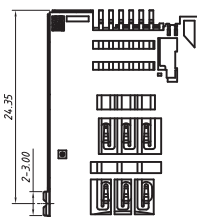
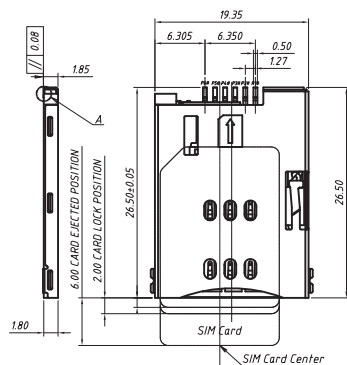
KLS1-SIM-030A



SIM CARD CONN; PUSH PUSH, 6P, H1.85mm, SMD

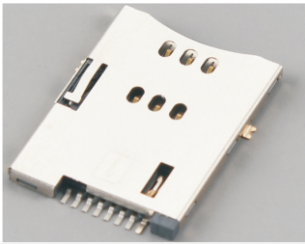


KLS1-SIM-030E

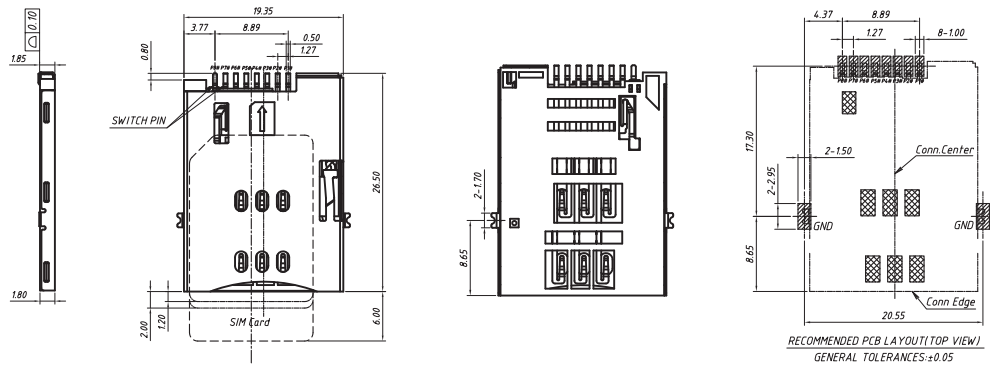


SIM Card Connector

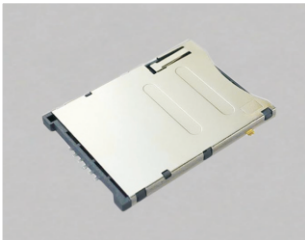
SIM CARD CONN; PUSH PUSH, 6+2P, H1.85mm, SMD with CD Pin



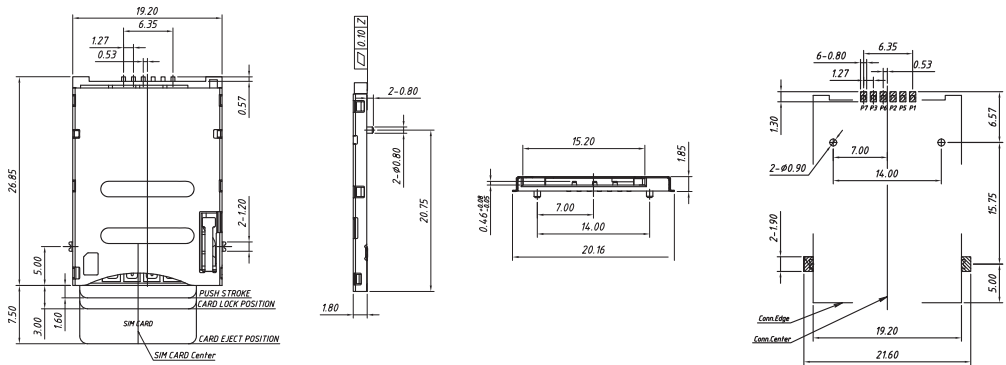
KLS1-SIM-084



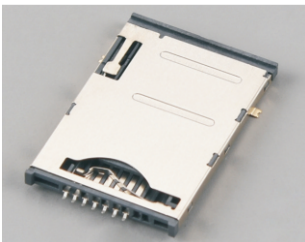
SIM CARD CONN; PUSH PUSH, 6P, H1.85mm, SMD



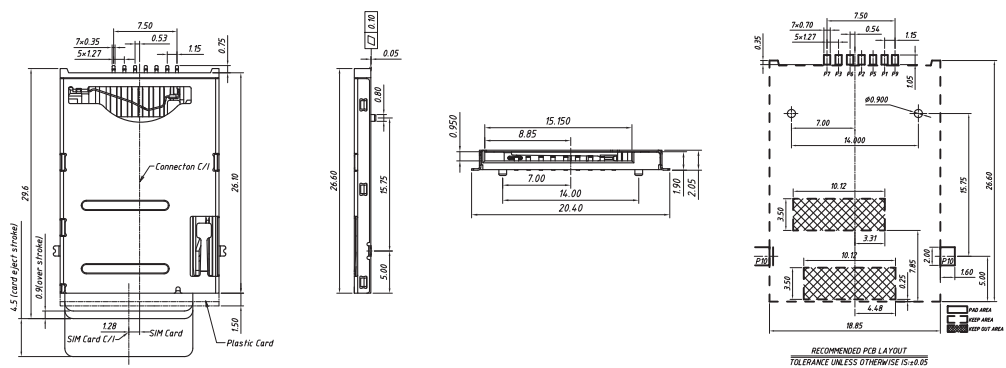
KLS1-SIM-106



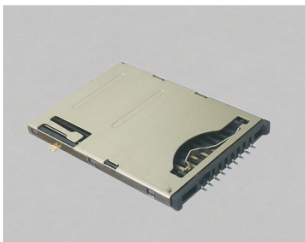
SIM CARD CONN; PUSH PUSH, 6+1P, H1.9mm, SMD with CD Pin



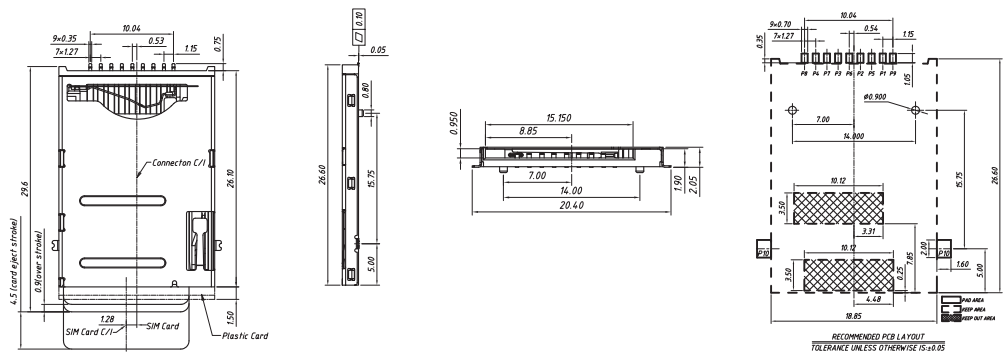
KLS1-SIM-107



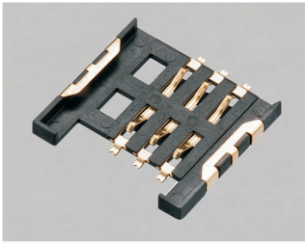
SIM CARD CONN; PUSH PUSH, 8+1P, H1.9mm, SMD with CD Pin



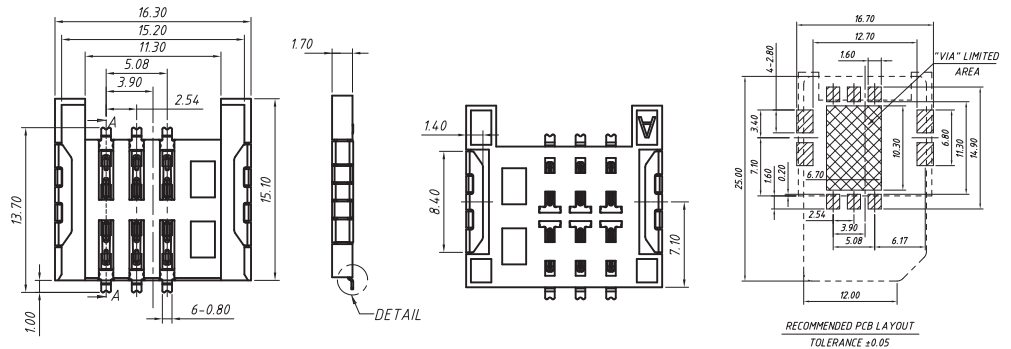
KLS1-SIM-108



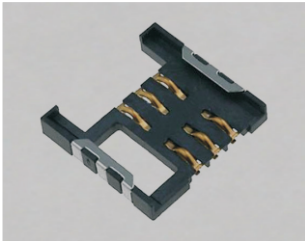
SIM CARD CONN, PUSH PULL 6P, H1.7mm, SMD



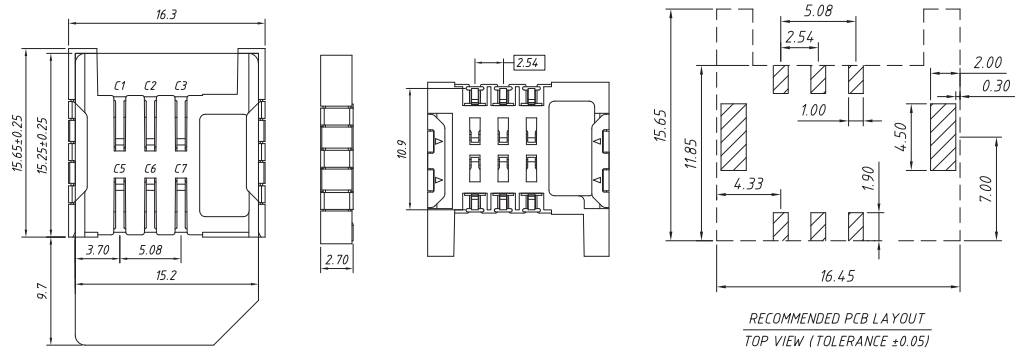
KLS1-SIM-015B



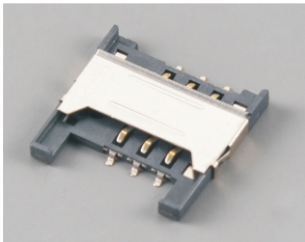
SIM CARD CONN, PUSH PULL 6P, H2.7mm, SMD



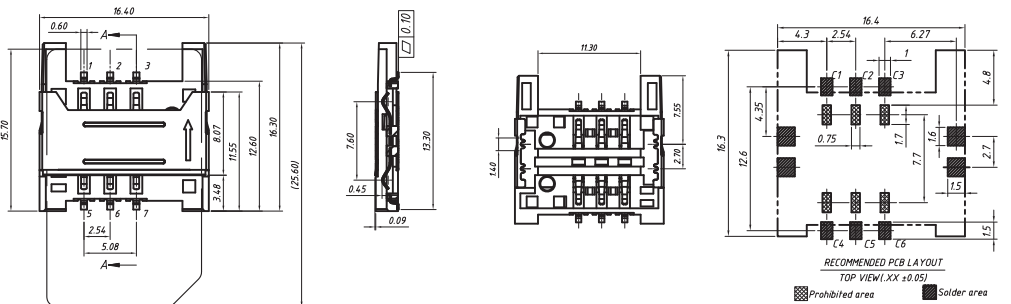
KLS1-SIM-015



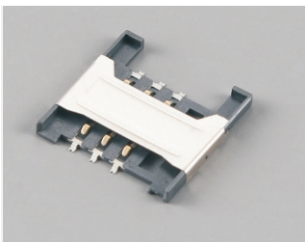
SIM CARD CONN, PUSH PULL 6P, H2.2mm, SMD



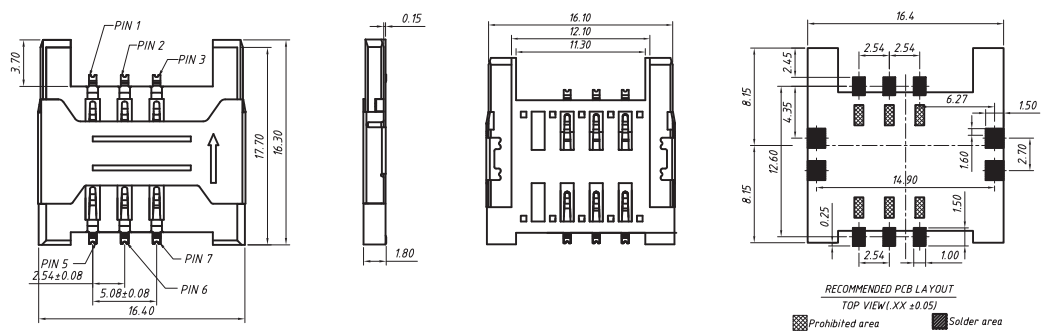
KLS1-SIM-044A



SIM CARD CONN, PUSH PULL 6P, H1.8mm, SMD

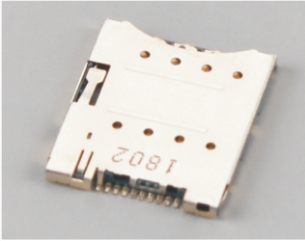


KLS1-SIM-044C

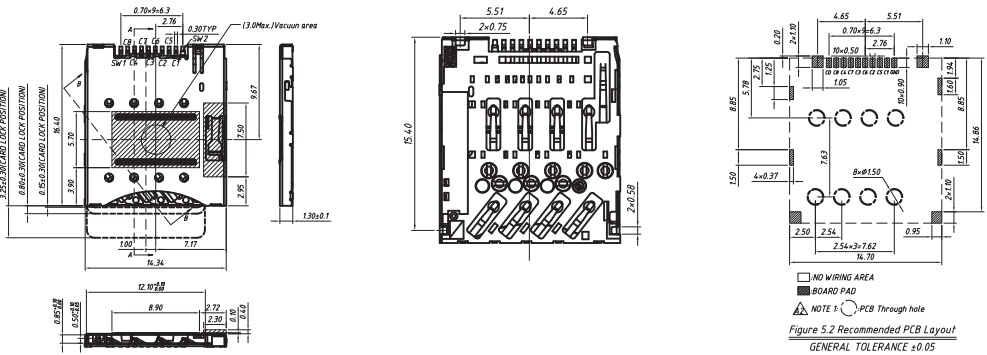


Micro SIM Connector

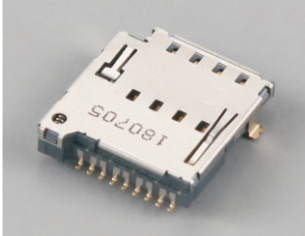
Micro SIM CONN;PUSH/PUSH,8+2Pin,H1.28mm,with CD Pin



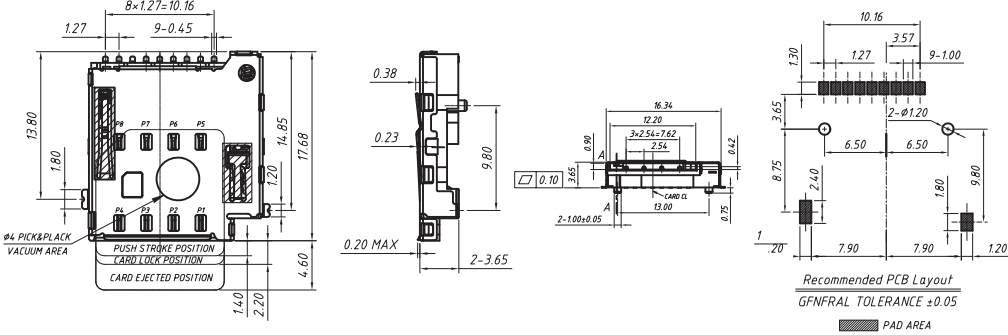
KLS1-SIM-095



Micro SIM CONN;PUSH/PUSH,8+1Pin,H3.65mm,with CD Pin



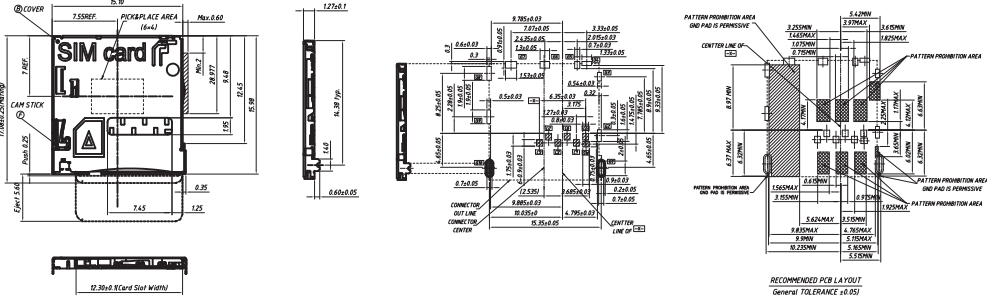
KLS1-SIM-096



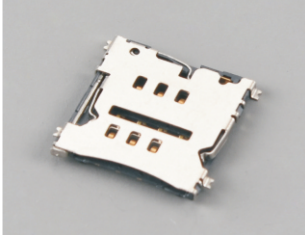
Micro SIM CONN;PUSH/PUSH,6Pin,H1.27mm,with CD Pin



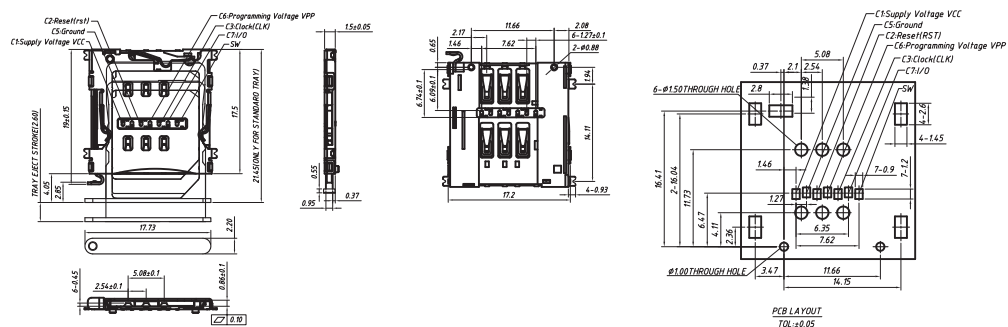
KLS1-SIM-098



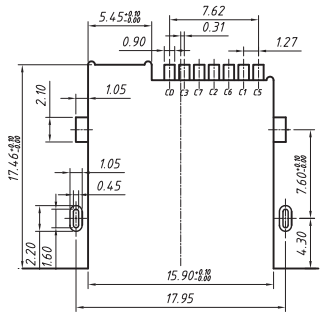
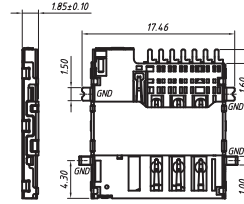
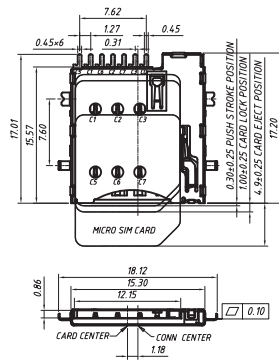
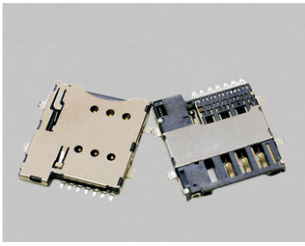
Micro SIM CONN;Tray type;H1.5mm



KLS1-SIM-075



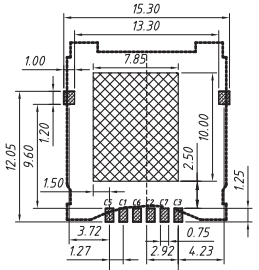
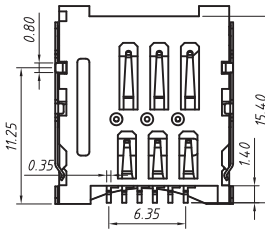
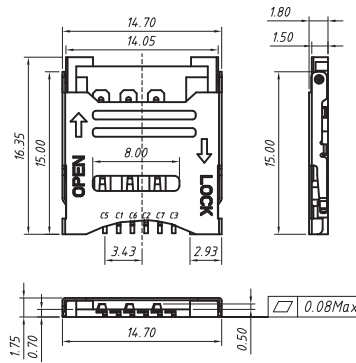
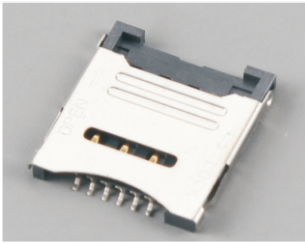
Micro SIM CONN; Reverse MID MOUNT 1.1mm, 6+1 Pin, with CD Pin



RECOMMENDED PCB LAYOUT
GENERAL TOLERANCE ±0.05

KLS1-SIM-097

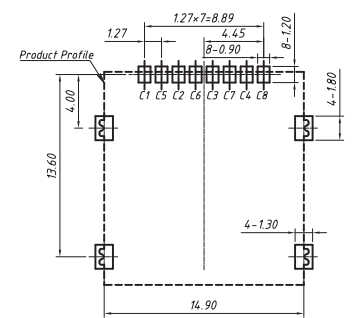
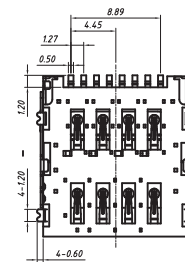
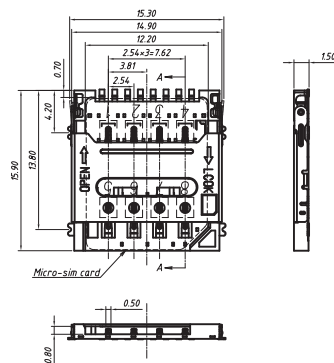
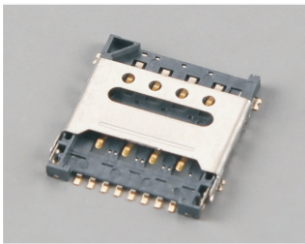
Micro SIM CONN; HINGED TYPE; 6 Pin H1.8mm



SMT SOLDER AREA
AND WIRING AREA
RECOMMENDED PCB LAYOUT
GENERAL TOLERANCE ±0.05

KLS1-SIM-072

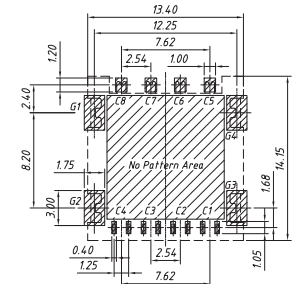
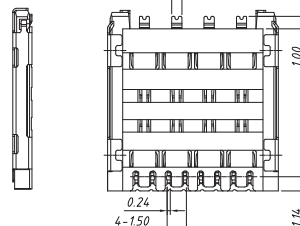
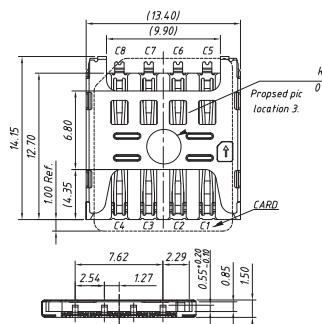
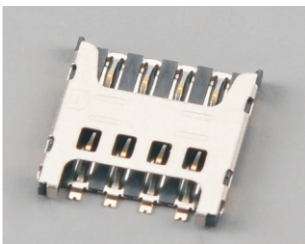
Micro SIM CONN; HINGED TYPE; 8 Pin H1.5mm



RECOMMENDED PCB LAYOUT
COMPONENT SIDE (TOLERANCE ±0.05)

KLS1-SIM-089

Micro SIM CONN; PUSH/PULL, 8 Pin, H1.5mm

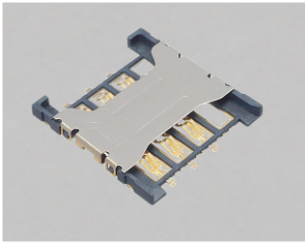


RECOMMENDED PCB LAYOUT (TOLERANCE ±0.05)
RECOMMENDED METAL MASK T=0.12MM

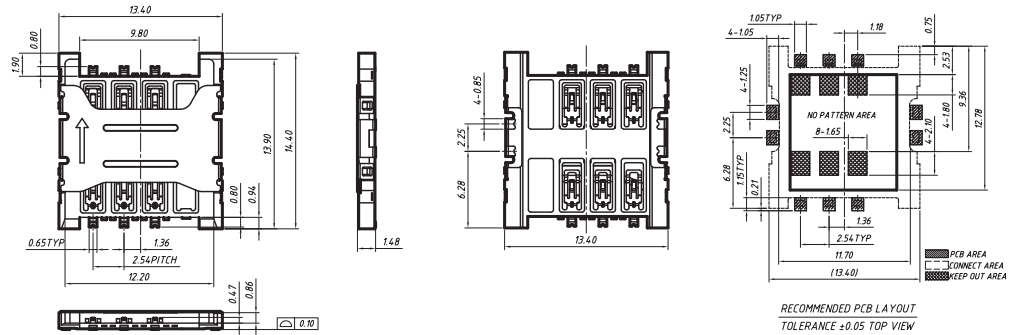
KLS1-SIM-091

Micro SIM Connector

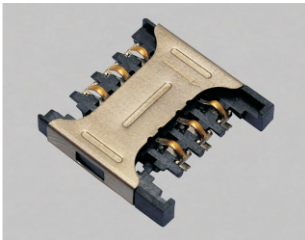
Micro SIM CONN;PUSH/PULL,6Pin,H1.5mm



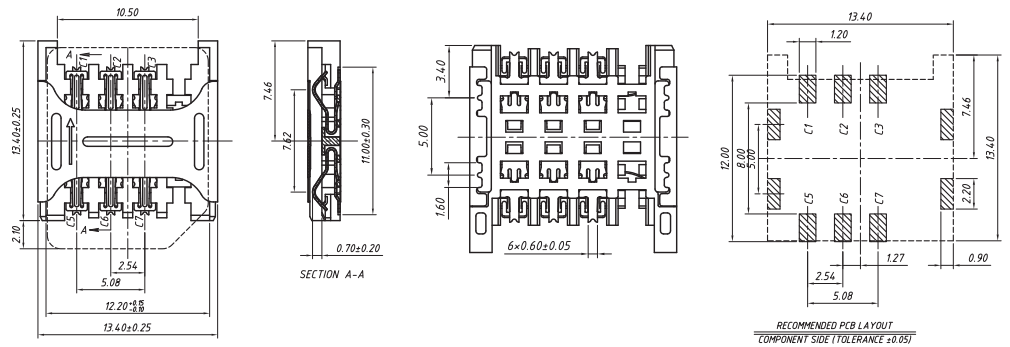
KLS1-SIM-099



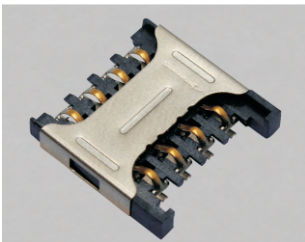
Micro SIM Card CONN,6P,H2.4mm,SMD



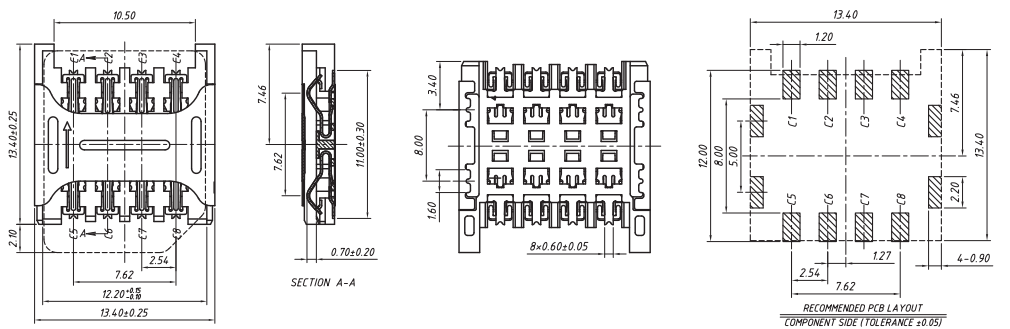
KLS1-SIM-044-6P



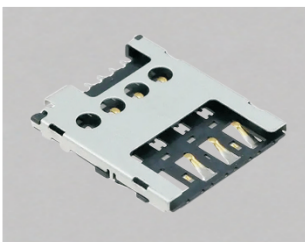
Micro SIM Card CONN,8P,H2.4mm,SMD



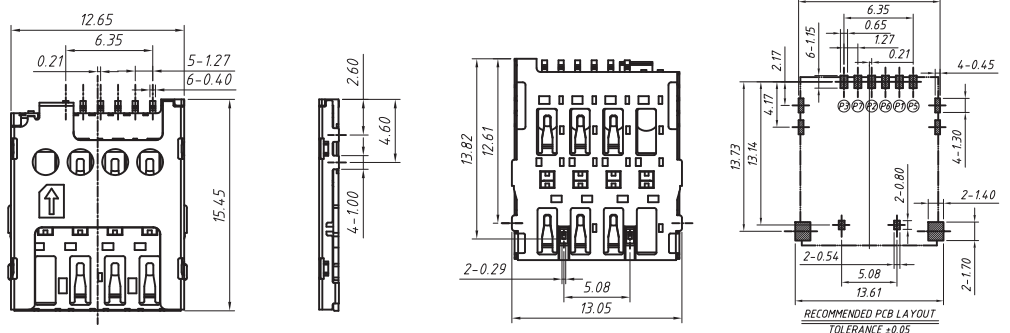
KLS1-SIM-044-8P



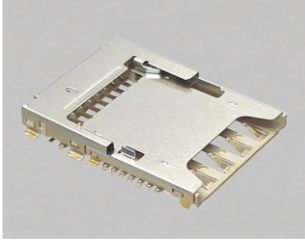
Micro SIM Card CONN,6P,H1.45mm,SMD



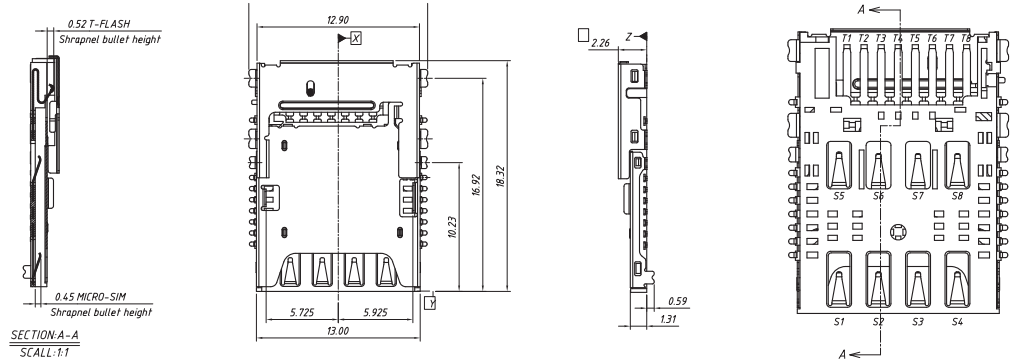
KLS1-SIM-046



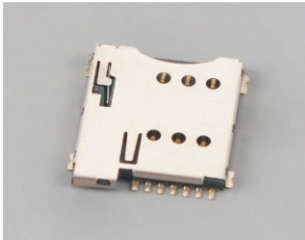
2 In 1 Micro SIM & SD Card CONN, 8P,H2.26mm,SMD



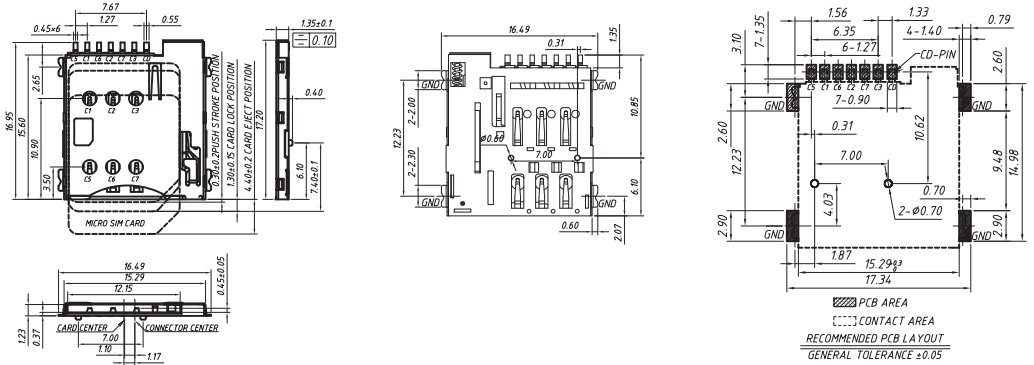
KLS1-SIM-109



Micro SIM CONN; PUSH/PUSH, 6+1Pin, H1.35mm, with CD Pin, with Post

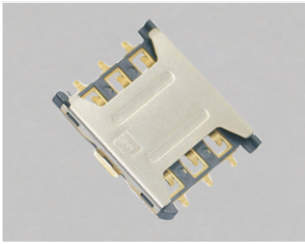


KLS1-SIM-069B

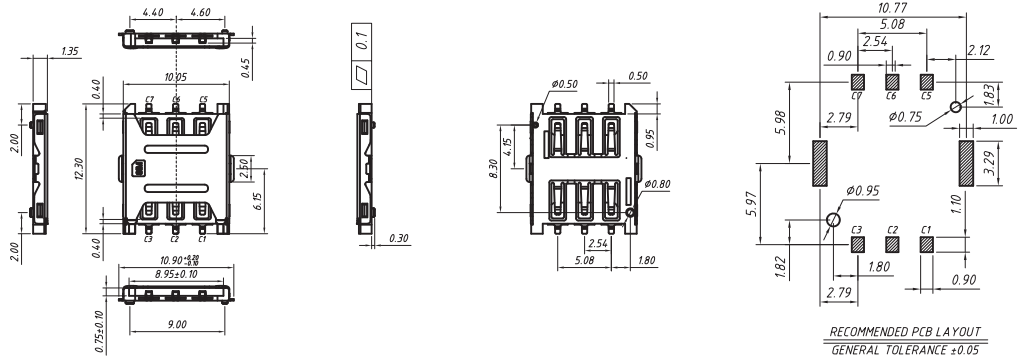


Nano SIM Connector

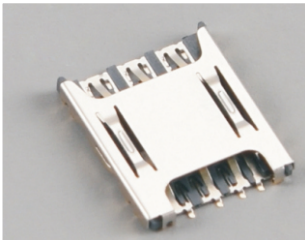
Nano SIM CONN; PUSH PULL, 6Pin, H1.35mm, with Post



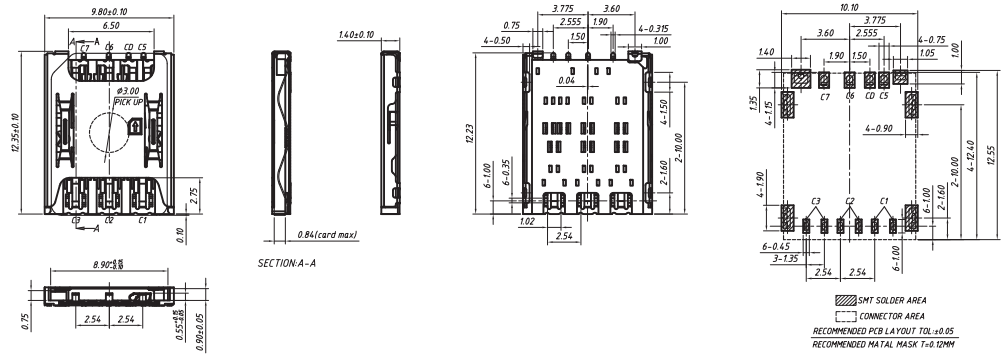
KLS1-SIM-076



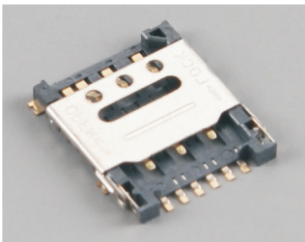
Nano SIM CONN; PUSH PULL, 6Pin, H1.4mm, with CD Pin



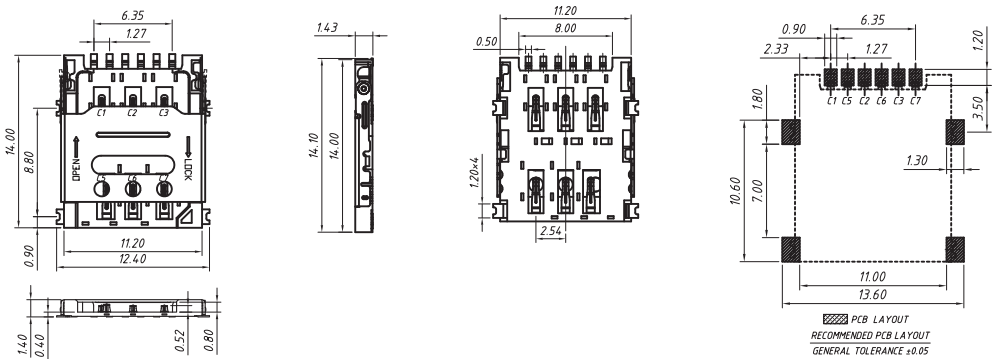
KLS1-SIM-092



Nano SIM CONN; HINGED TYPE, 6Pin, H1.4mm



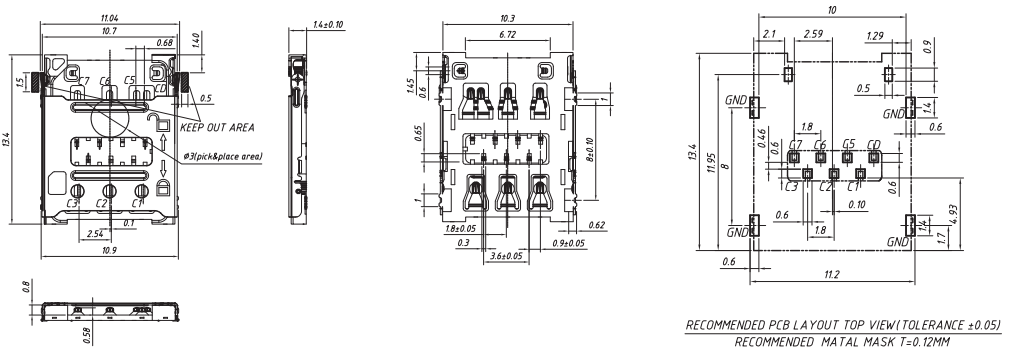
KLS1-SIM-077



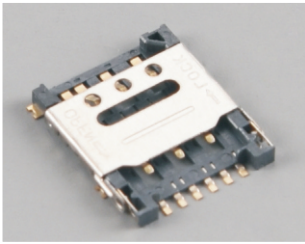
Nano SIM CONN; HINGED TYPE, 6+1Pin, H1.4mm, with CD Pin



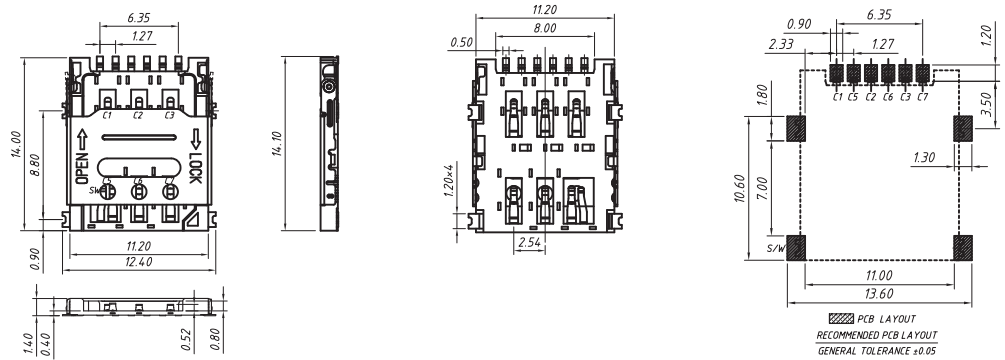
KLS1-SIM-101



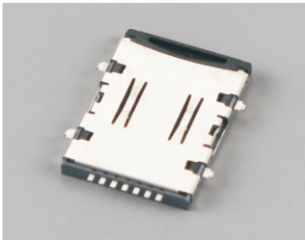
Nano SIM CONN;HINGED TYPE,6Pin,H1.4mm



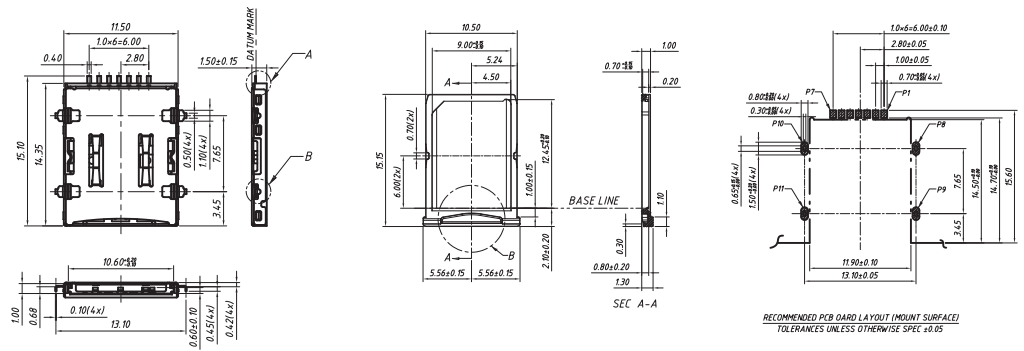
KLS1-SIM-077A



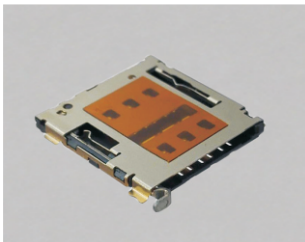
Nano SIM CONN;MID MOUNT & Tray type,6+1Pin,H1.5mm,with CD Pin



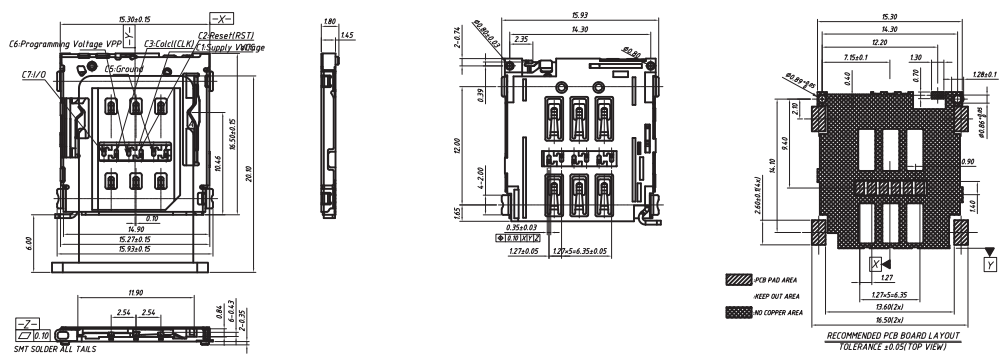
KLS1-SIM-100



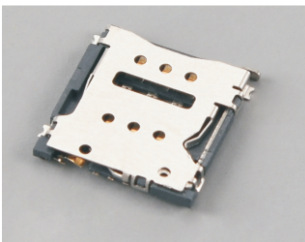
Nano SIM CONN;Tray type,6Pin,H1.5mm,with CD Pin



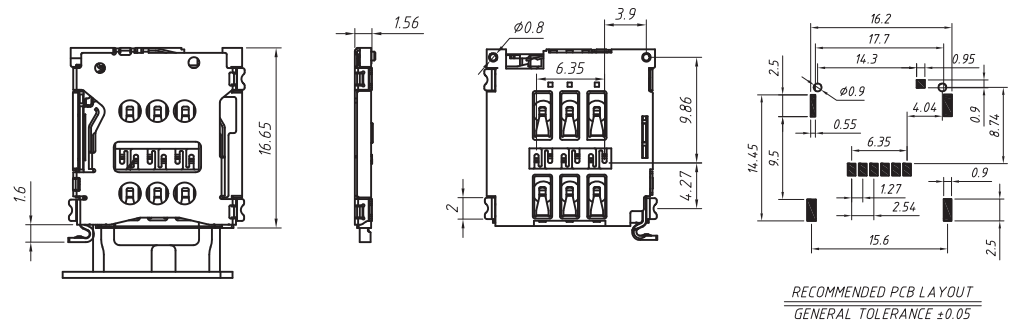
KLS1-SIM-102



Nano SIM CONN;Tray type,6Pin,H1.55mm,with CD Pin

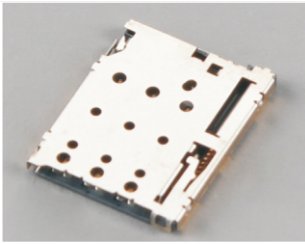


KLS1-SIM-104

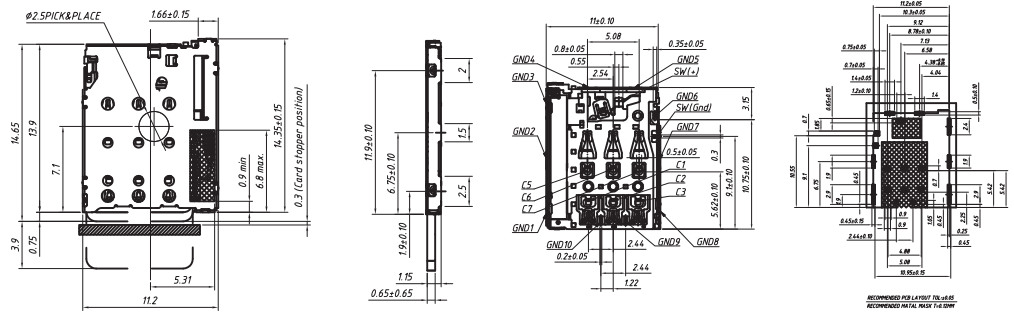


Nano SIM Connector

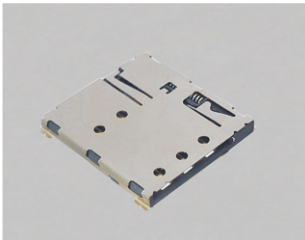
Nano SIM CONN; PUSH/PUSH, 6Pin, H1.25mm, with CD Pin



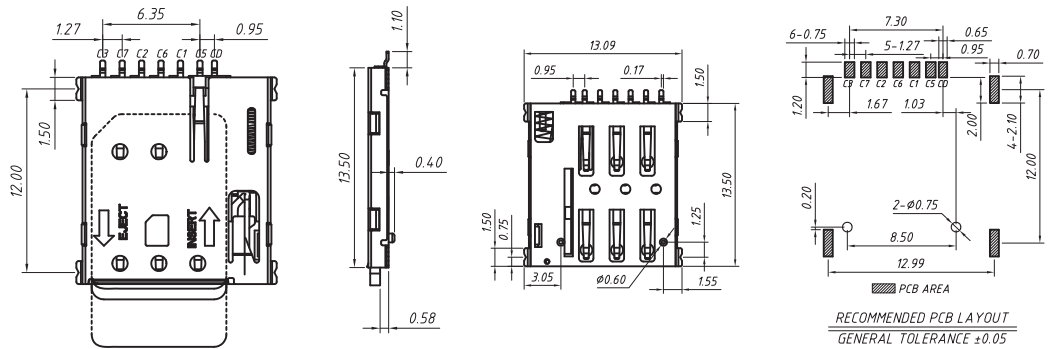
KLS1-SIM-103



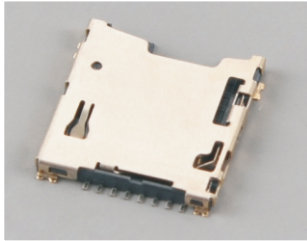
Nano SIM CONN; PUSH/PUSH, 6+1Pin, H1.37mm, with CD Pin



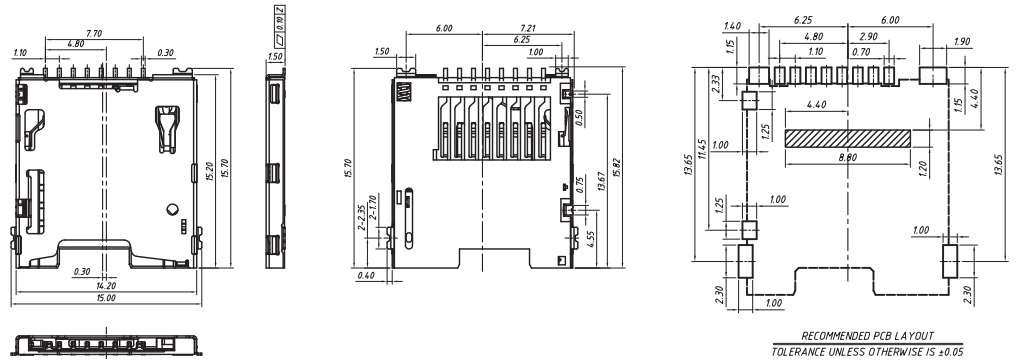
KLS1-SIM-066



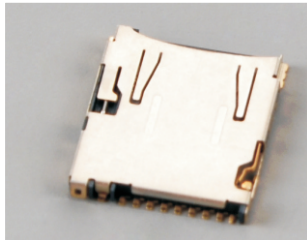
Micro SD Card CONN; PUSH/PULL, H1.5mm, SMD with CD Pin



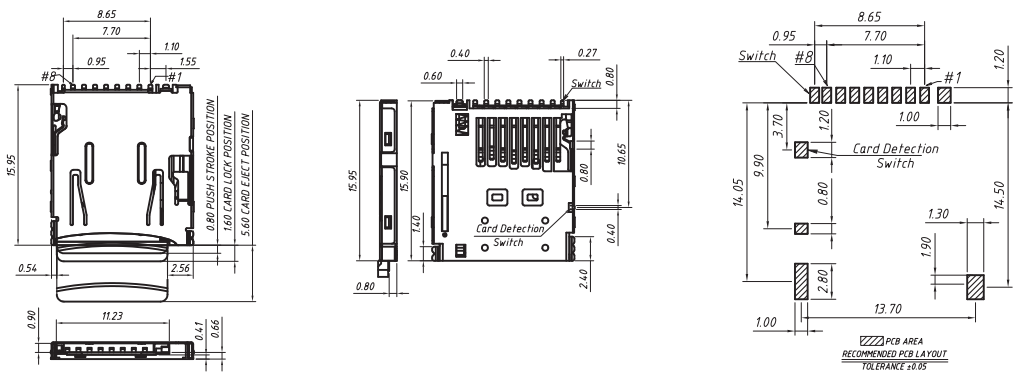
KLS1-SD104



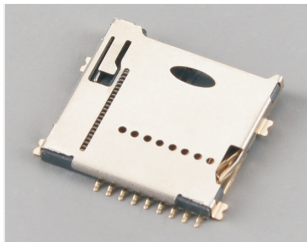
Micro SD Card CONN; PUSH/PUSH, H1.68mm, SMD with CD Pin



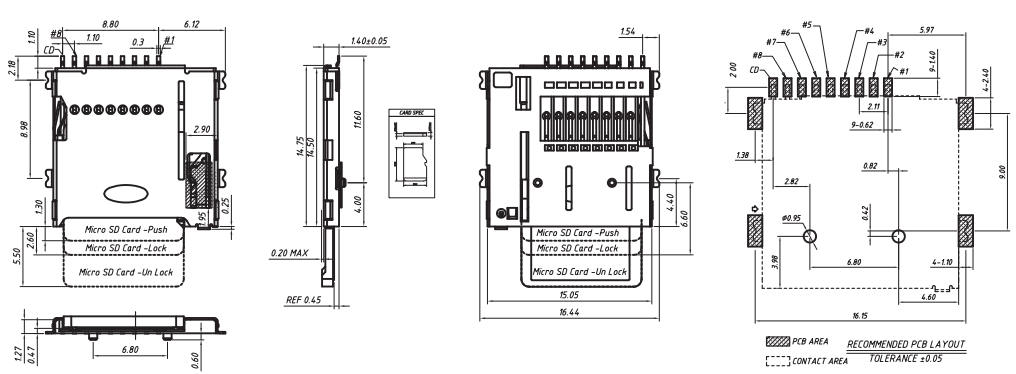
KLS1-SD114



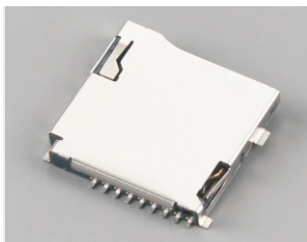
Micro SD Card CONN; PUSH/PUSH, H1.4mm, SMD with CD Pin



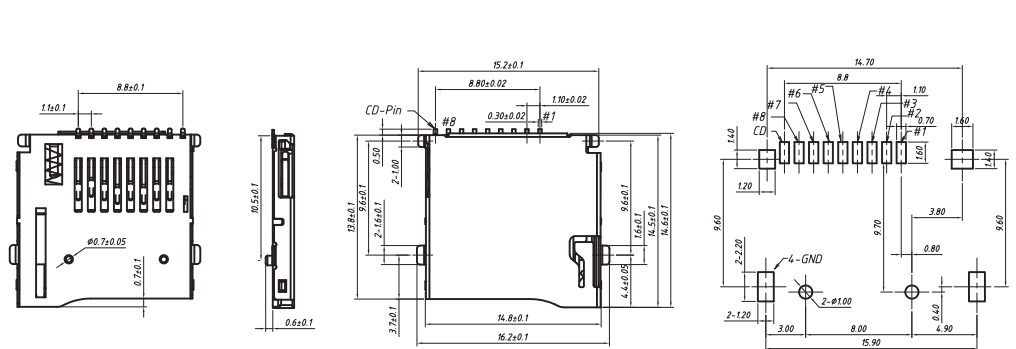
KLS1-TF-012



Micro SD Card CONN; PUSH/PUSH, H1.85mm, SMD with CD Pin

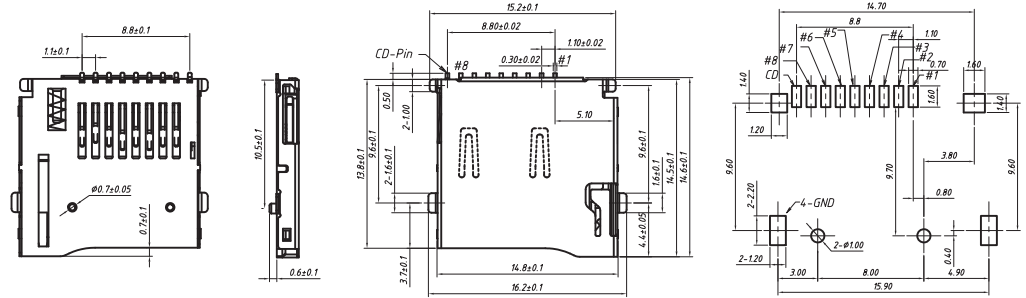
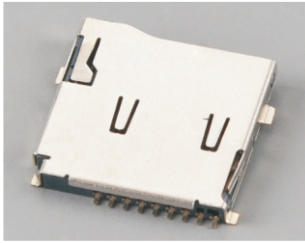


KLS1-TF-003



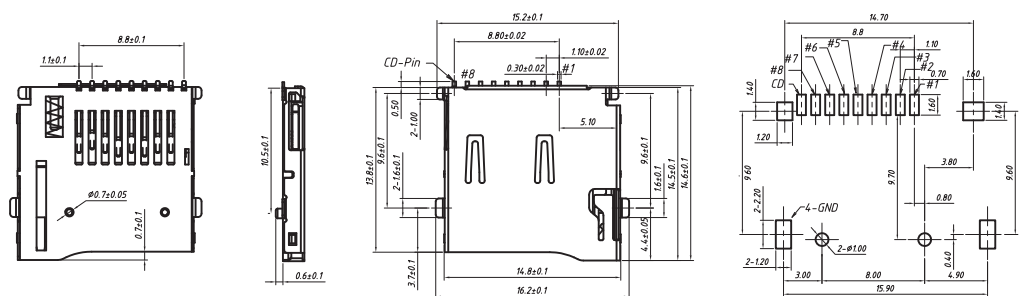
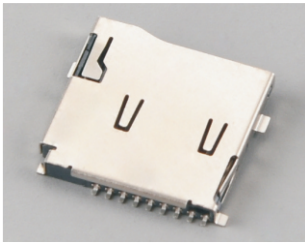
Micro SD Card Connector

Micro SD Card CONN;PUSH/PUSH,H1.85mm,SMD with CD Pin,GOLD



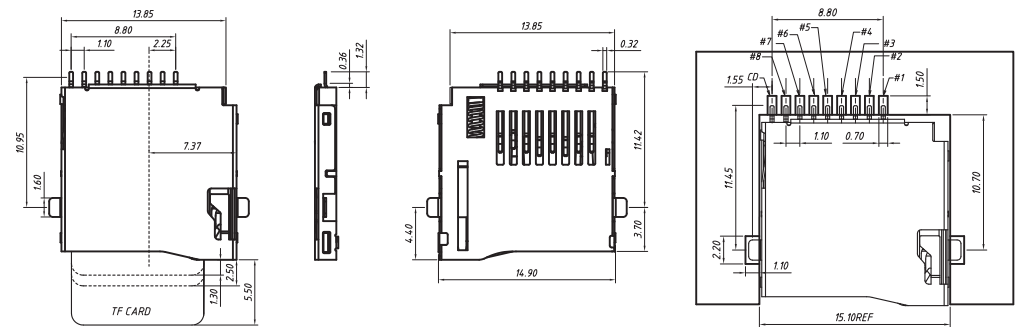
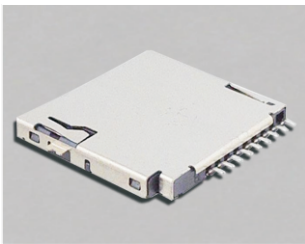
KLS1-TF-003C

Micro SD Card CONN;PUSH/PUSH,H1.85mm,SMD with CD Pin



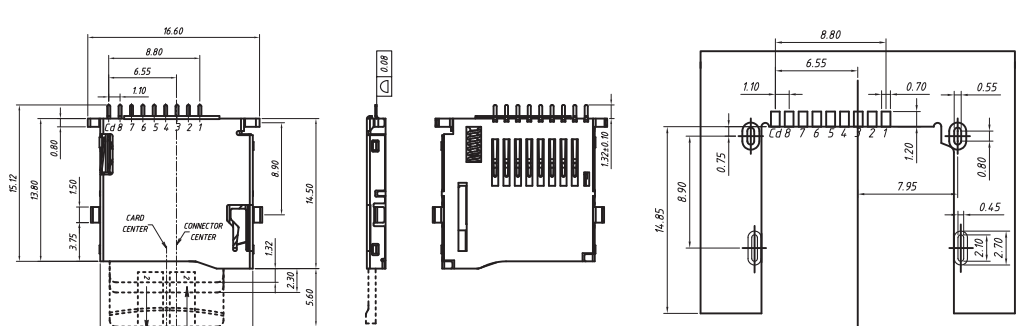
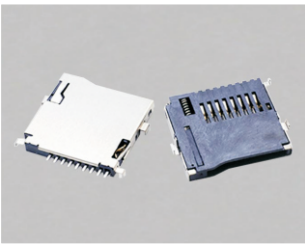
KLS1-TF-003D

Micro SD Card CONN;PUSH/PUSH,MID MOUNT 1.0mm,SMD with CD Pin



KLS1-TF-003A

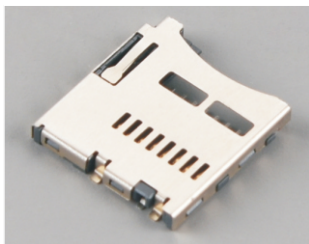
Micro SD Card CONN;PUSH/PUSH,MID MOUNT 1.0mm,DIP with CD Pin



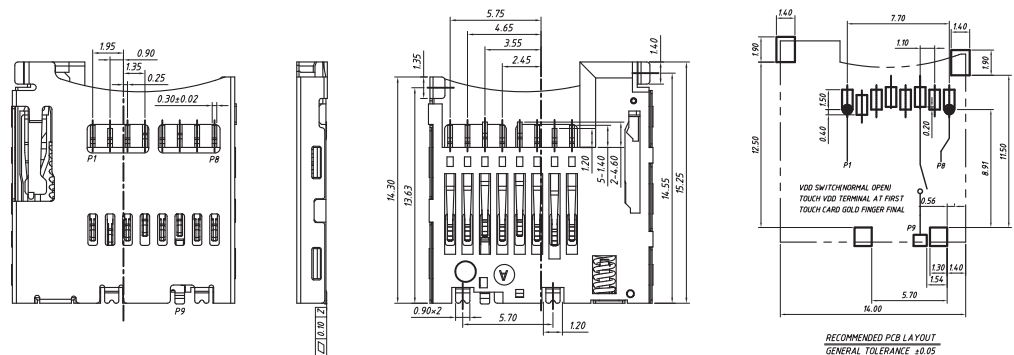
KLS1-TF-003E

RECOMMENDED PCB HOLE LAYOUT
COMPONENT SIDE VIEW (TOLERANCE:±0.05)

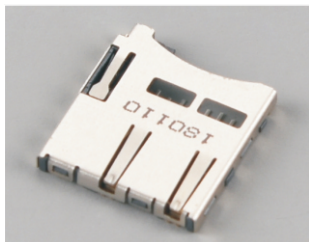
Micro SD Card CONN;PUSH/PUSH,H1.85mm,SMD Normally open



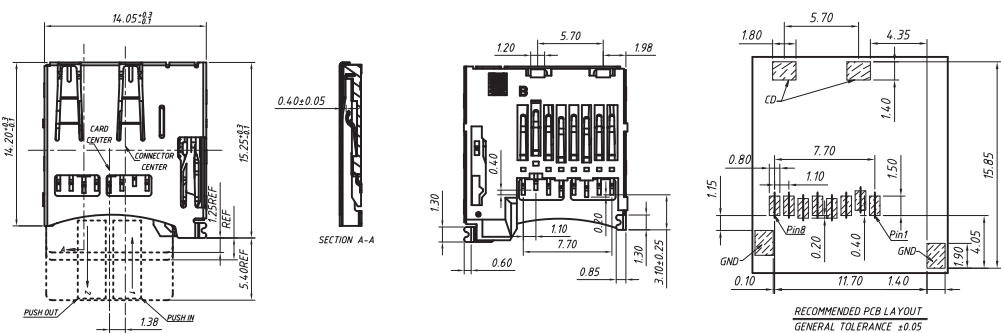
KLS1-SD107



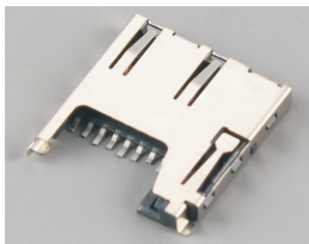
Micro SD Card CONN;PUSH/PUSH,H1.85mm,SMD Normally closed



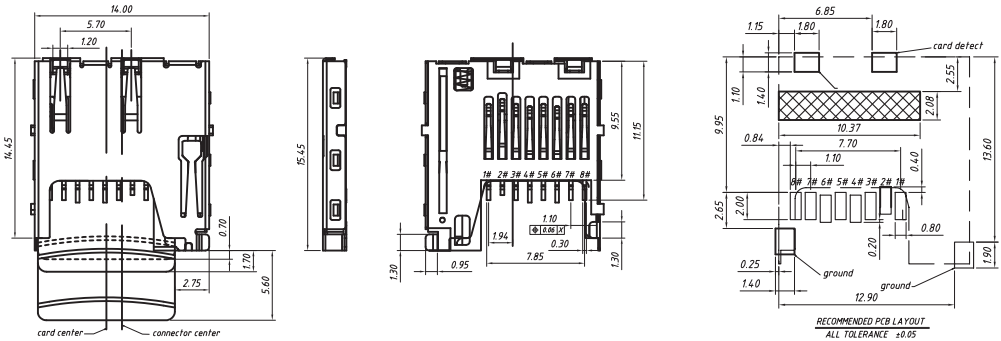
KLS1-TF-001



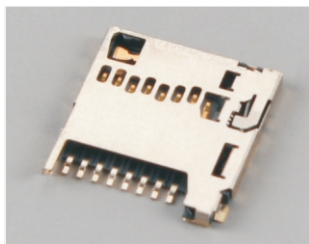
Micro SD Card CONN;PUSH/PUSH,H1.85mm,SMD Normally closed



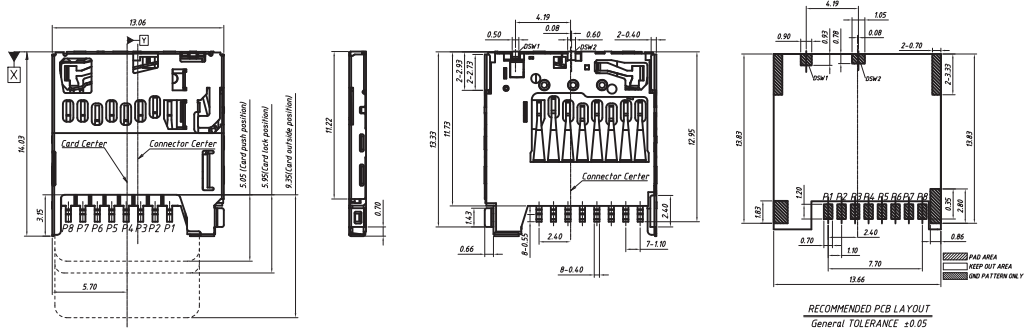
KLS1-TF-001B



Micro SD Card CONN;PUSH/PUSH,H1.28mm,SMD with CD Pin

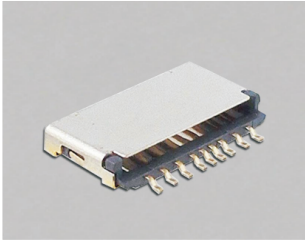


KLS1-SD113

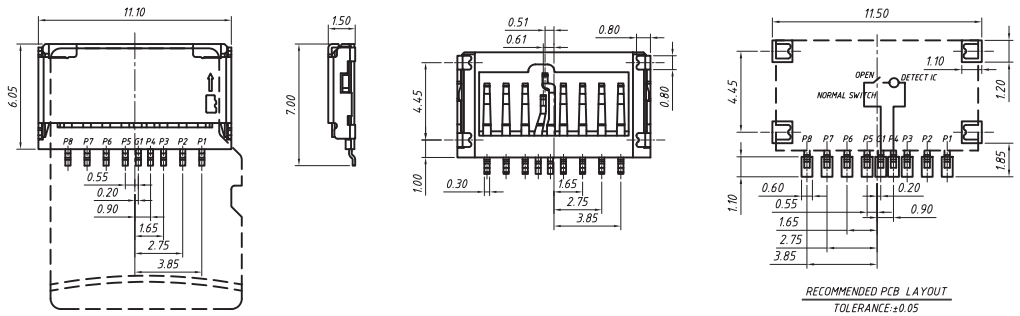


Micro SD Card Connector

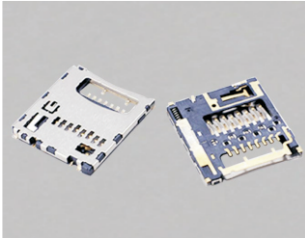
Micro SD Card CONN;PUSH/PULL,H1.5mm,SMD with CD Pin



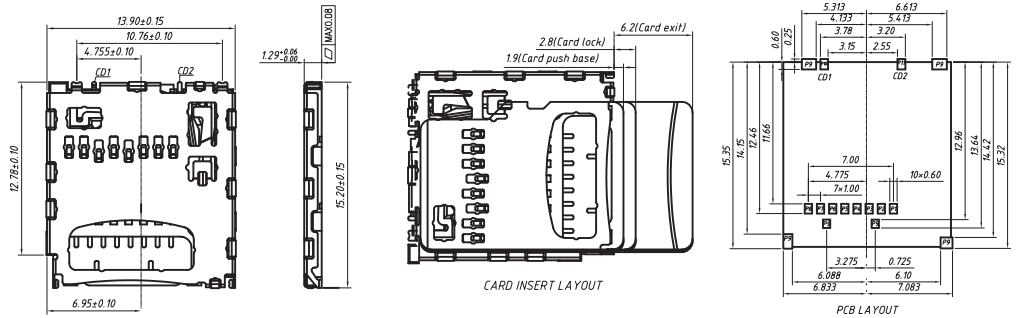
KLS1-TF-019



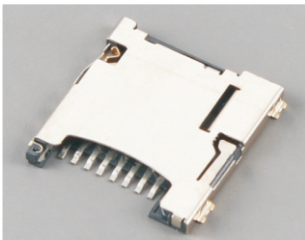
Micro SD Card CONN;PUSH/PUSH,H1.29mm,SMD with CD Pin



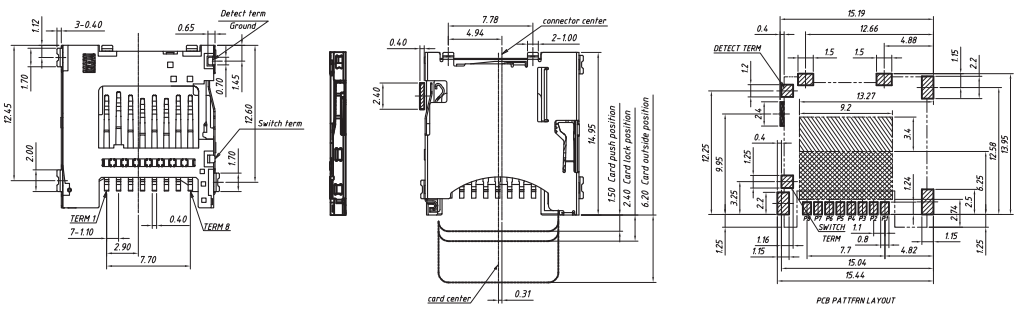
KLS1-TF-018



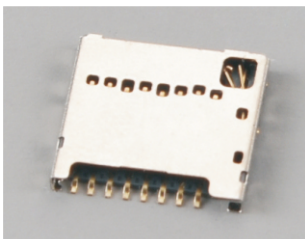
Micro SD Card CONN;PUSH/PUSH,H1.4mm,SMD with CD Pin



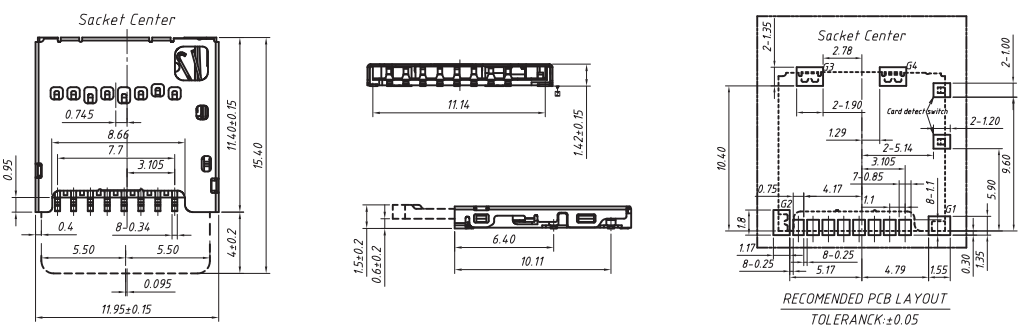
KLS1-TF-016



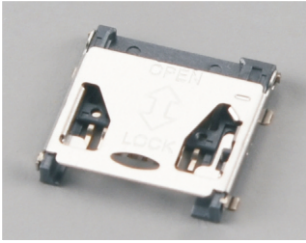
Micro SD Card CONN; PUSH/PULL,H1.42mm,SMD with CD Pin



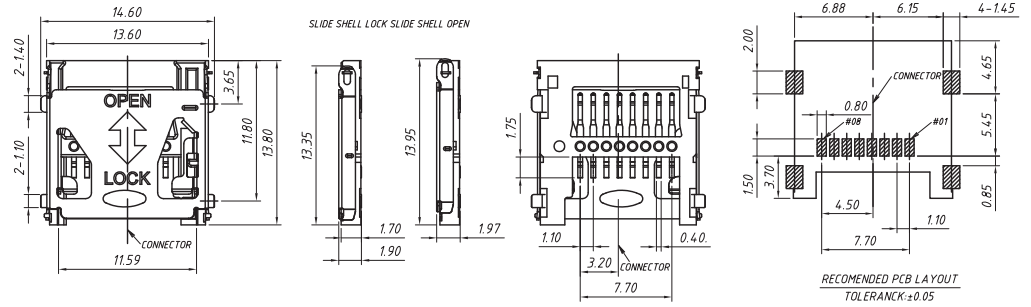
KLS1-TF-015



Micro SD Card CONN;HINGED TYPE,H1.9mm



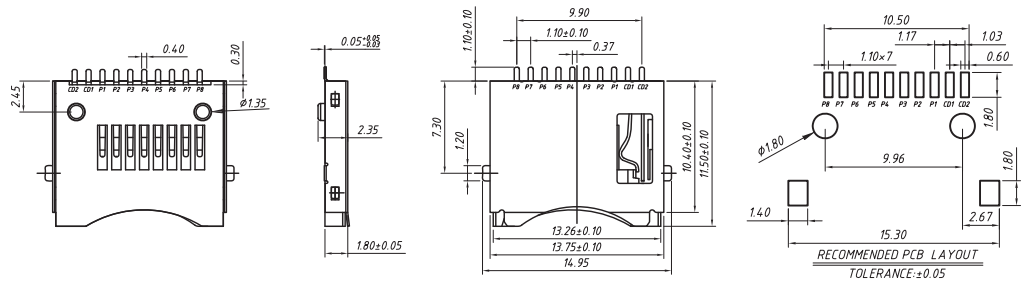
KLS1-TF-017



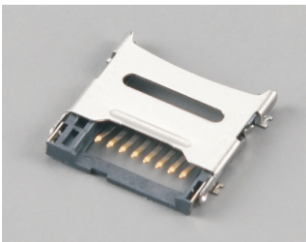
Micro SD Card CONN;PUSH/PULL,H1.8mm,SMD with CD Pin



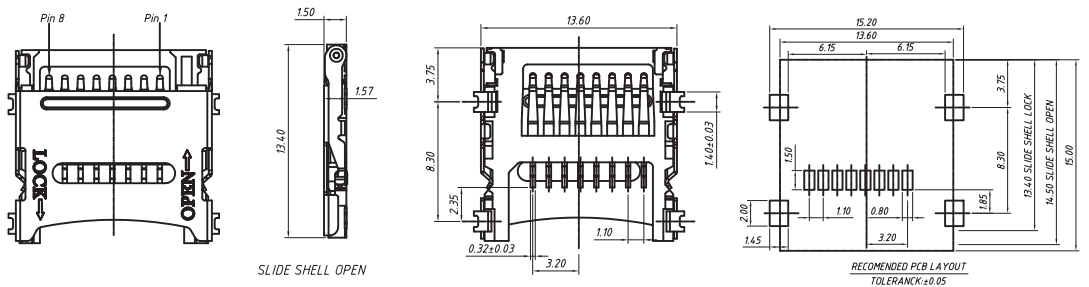
KLS1-TF-014



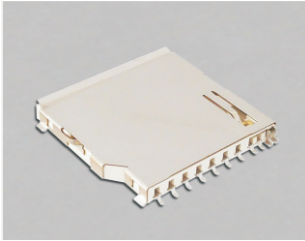
Micro SD Card CONN;HINGED TYPE,H1.8mm



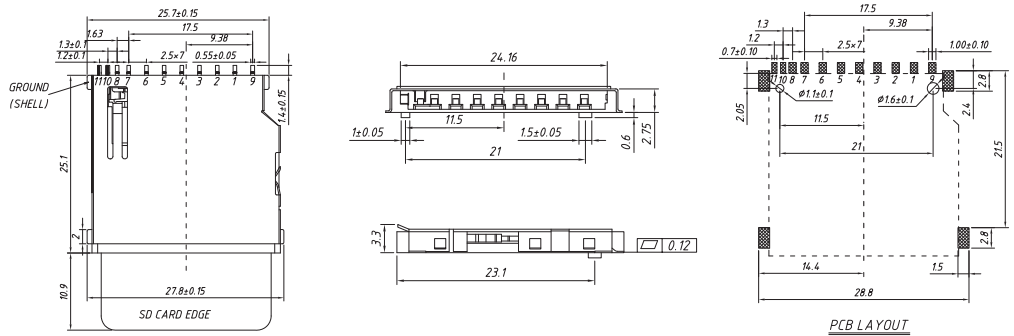
KLS1-TF-007



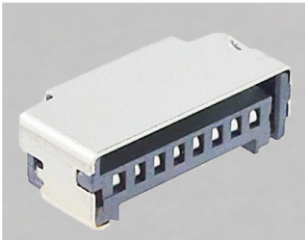
SD Card CONN; PUSH/PULL, H2.75mm, SMD with CD Pin



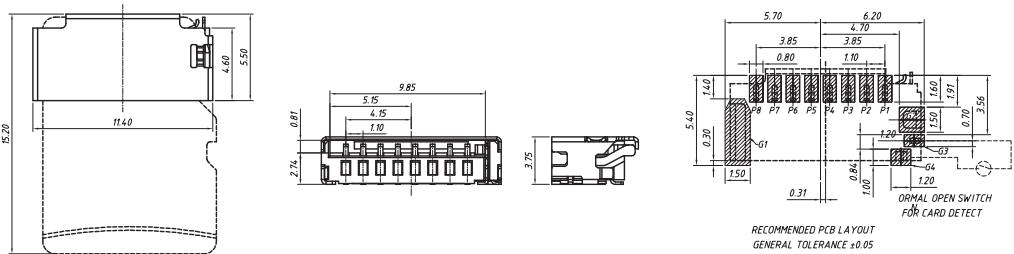
KLS1-SD112



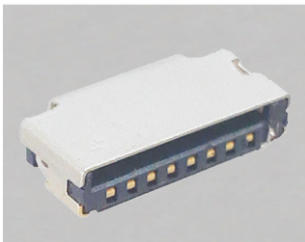
SD Card CONN, PUSH/PULL, H3.75mm, SMD



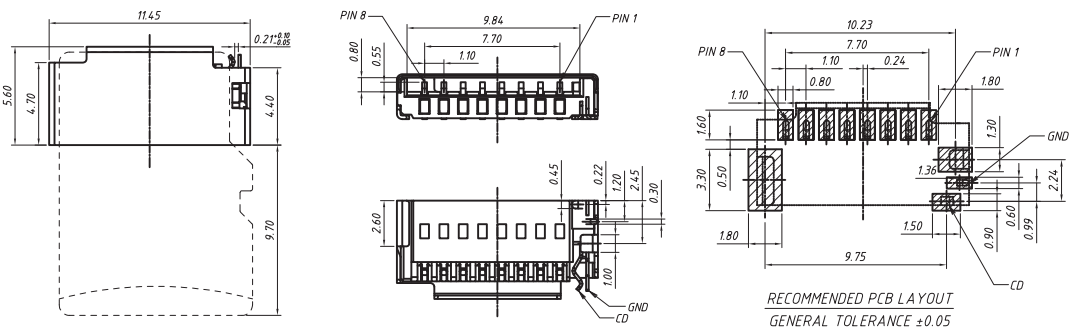
KLS1-TF-006



SD Card CONN, PUSH/PULL, H2.55mm, SMD with CD Pin

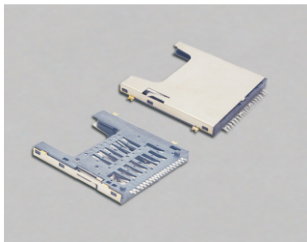


KLS1-TF-020

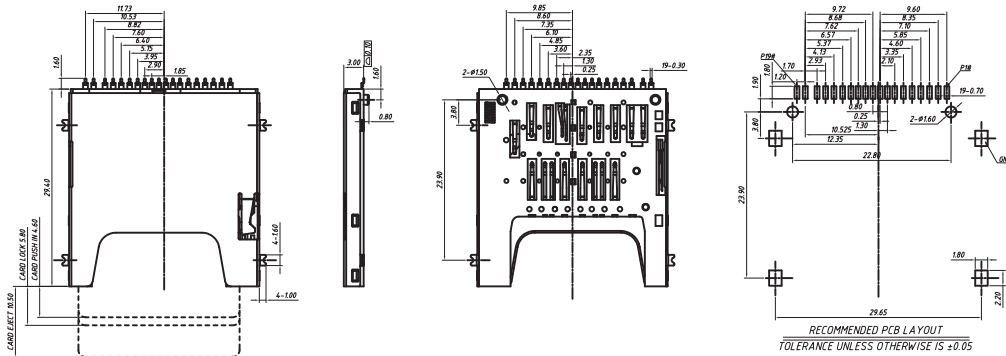


SD 4.0 Card Connector

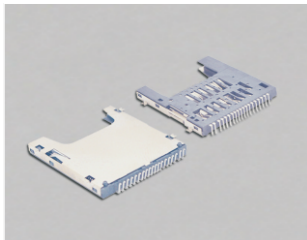
SD 4.0 PUSH/PUSH CONN,H3.0mm



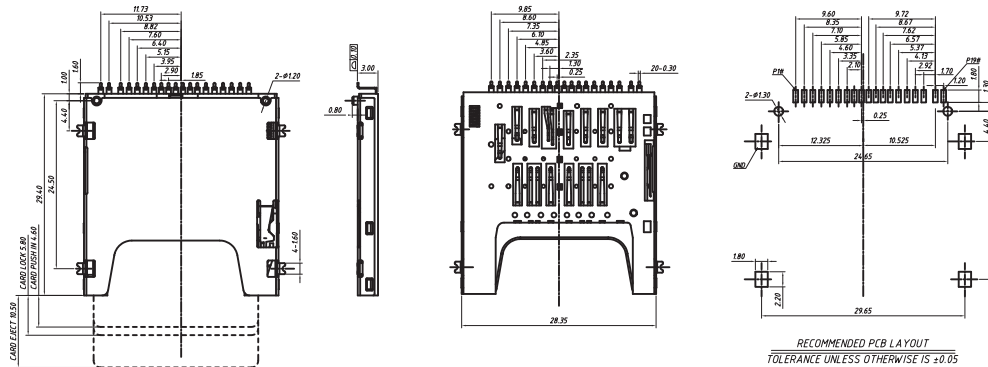
KLS1-SD4.0-001



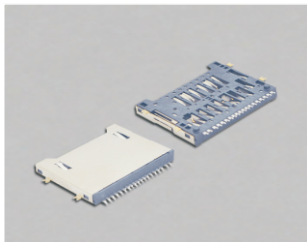
SD 4.0 PUSH/PUSH CONN,H3.0mm,Reverse



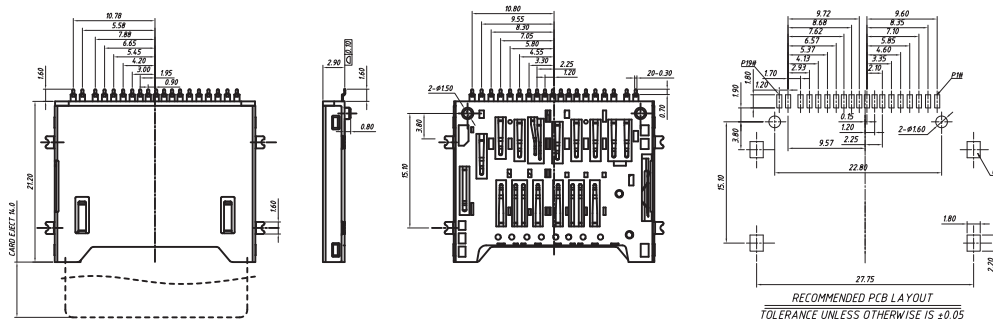
KLS1-SD4.0-001A



SD 4.0 No PUSH CONN,H3.0mm



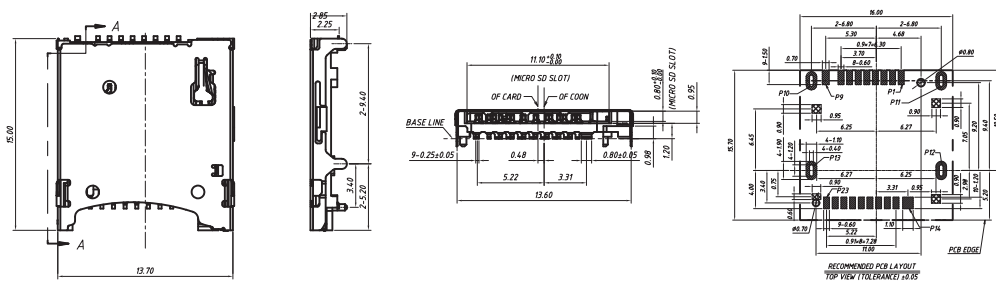
KLS1-SD4.0-002



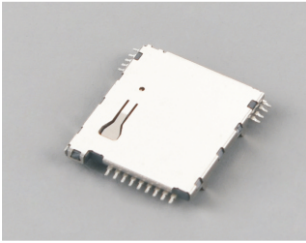
Micro SD 4.0 PUSH/PUSH CONN,T0.98mm



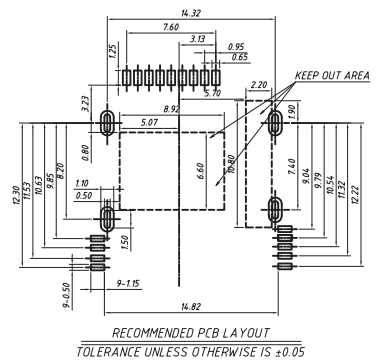
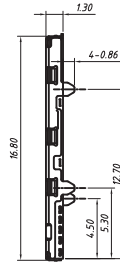
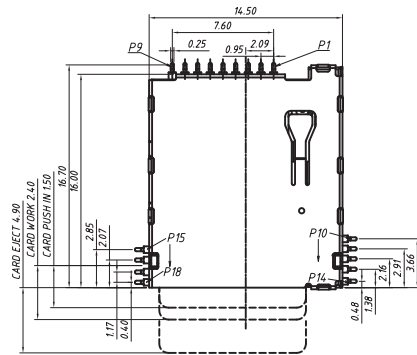
KLS1-SD4.0-004



Micro SD 4.0 PUSH/PUSH CONN,H1.3mm



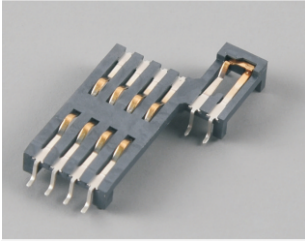
KLS1-SD4.0-003



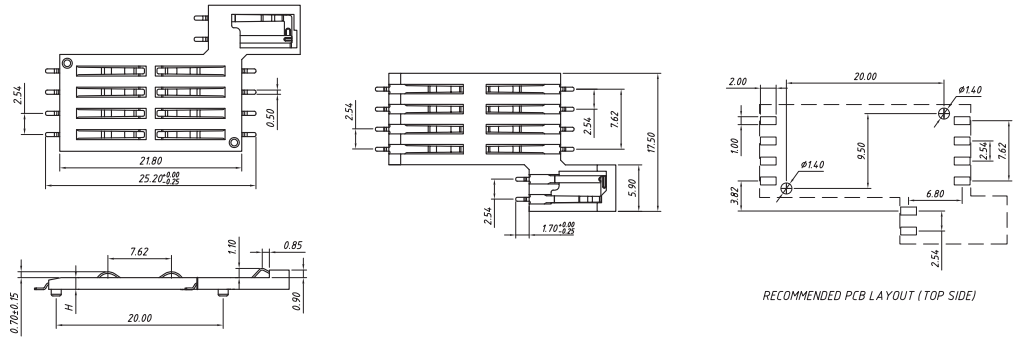
RECOMMENDED PCB LAYOUT
TOLERANCE UNLESS OTHERWISE IS ± 0.05

Smart Card Connector

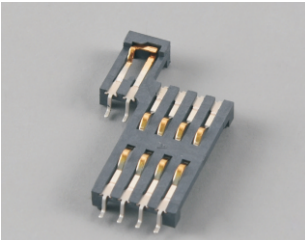
Smart Card CONN, SMD 8P, with Right CD Pin



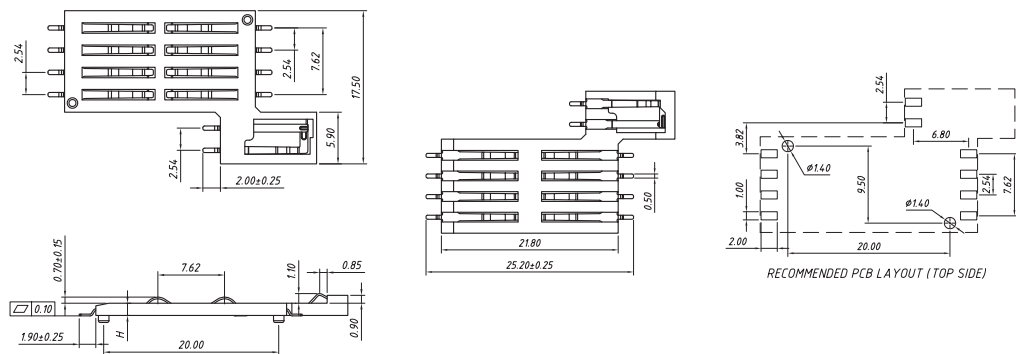
KLS1-SIM-045



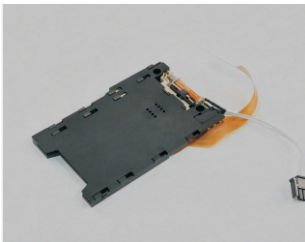
Smart Card CONN, SMD 8P, with LEFT CD Pin



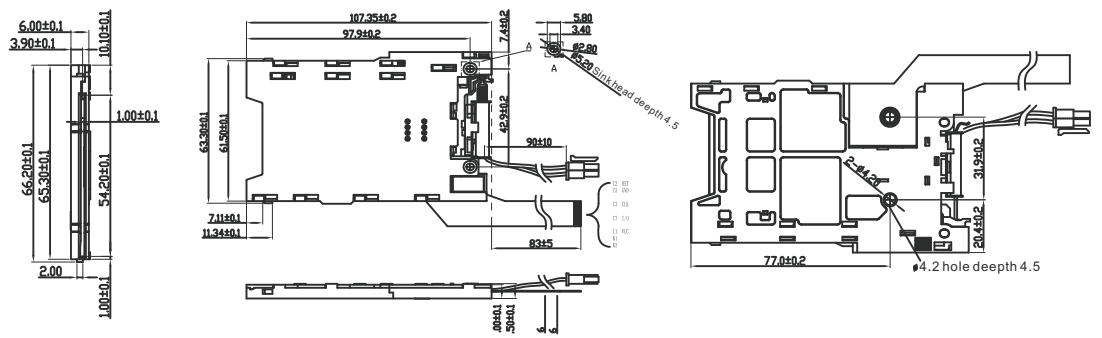
KLS1-SIM-045A



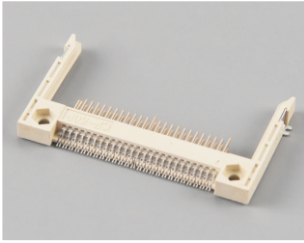
Smart Card CONN



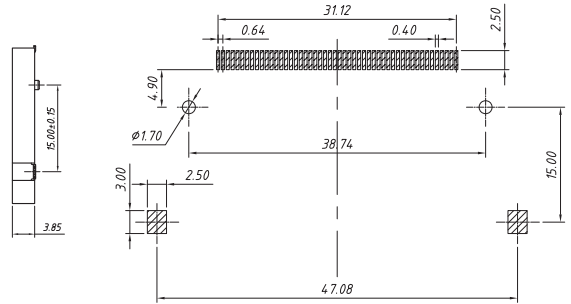
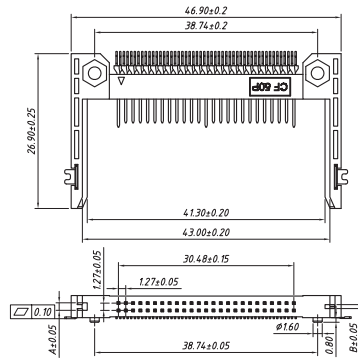
KLS1-SCC01



CF CARD CONN, L26.9mm, H3.85mm

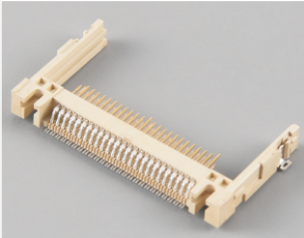


KLS1-CF-001

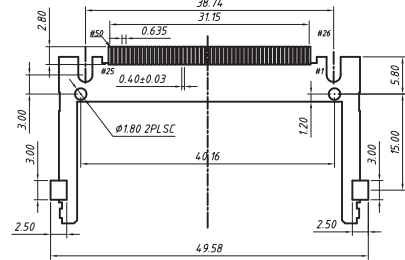
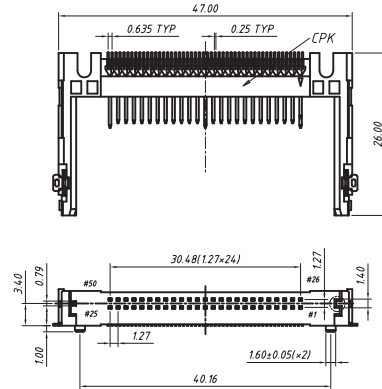


Recommended PCB Layout (Top Side)

CF CARD CONN, L26mm, H5.4mm

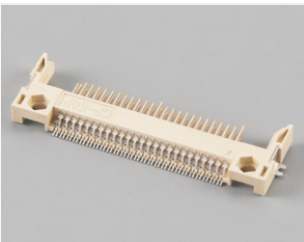


KLS1-CF-002

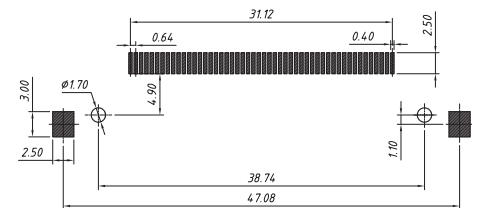
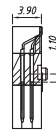
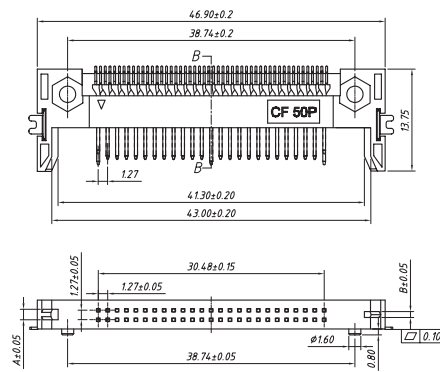


Recommended PCB Layout (Top Side)

CF CARD CONN, L13.75mm, H3.9mm



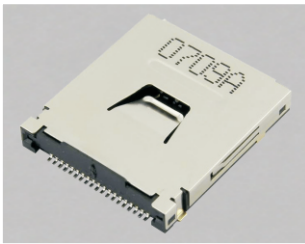
KLS1-CF-003



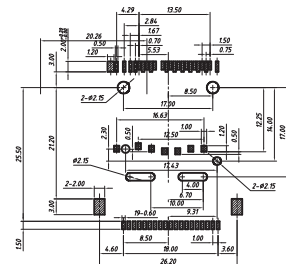
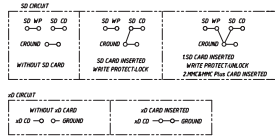
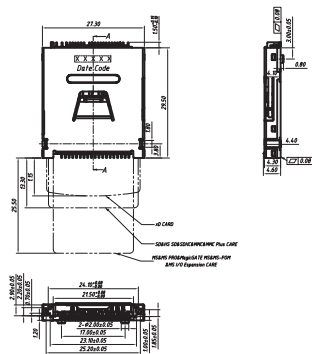
RECOMMENDED PCB LAYOUT
GENERAL TOLERANCE ±0.05

Cfast Host Connector

Cfast Host Connector 5 in 1 CoNN,H4.3mm

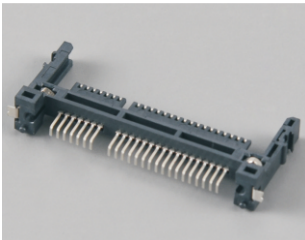


KLS1-MUT51-001

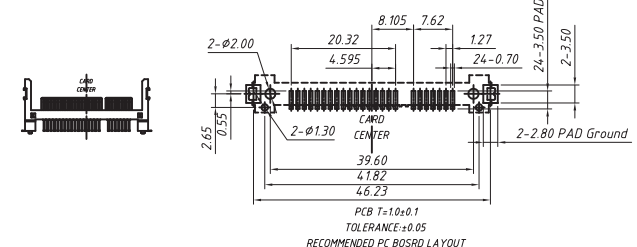
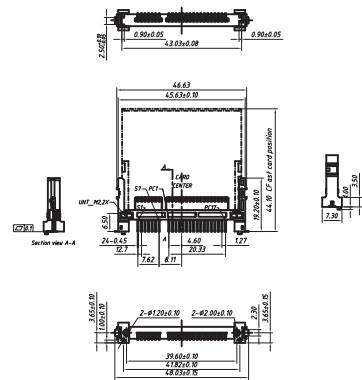


Legend:
■ Solder Area
ⓧ Pattern Prohibited Area
□ Break Open Area
RECOMMENDED PCB LAYOUT
TOLERANCE: ±0.05mm

Cfast Host Conn, Vertical SMT



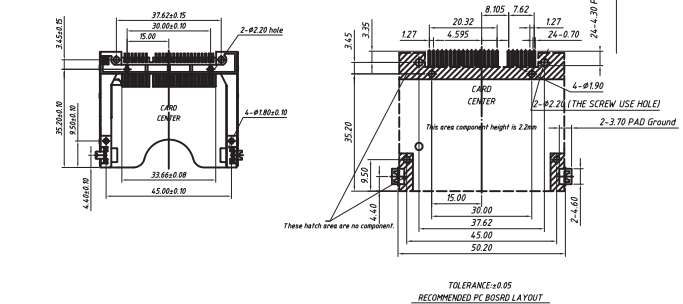
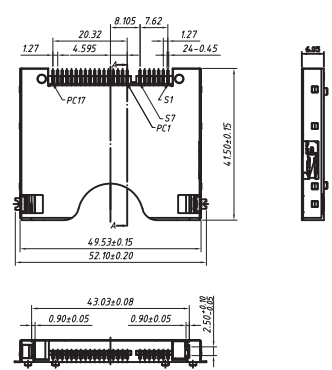
KLS1-CFA-001



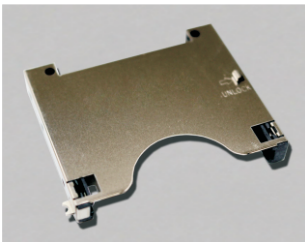
Cfast Host Conn,PUSH/PUSH H6.05



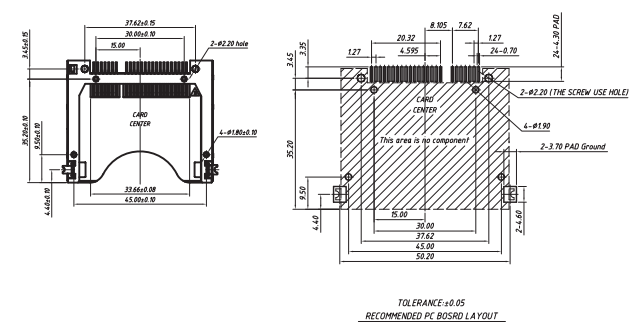
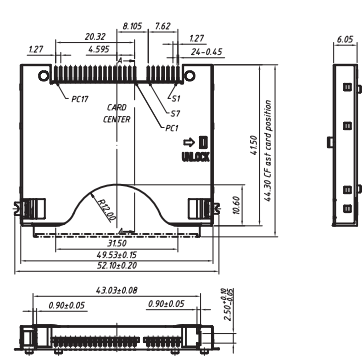
KLS1-CFA-002A



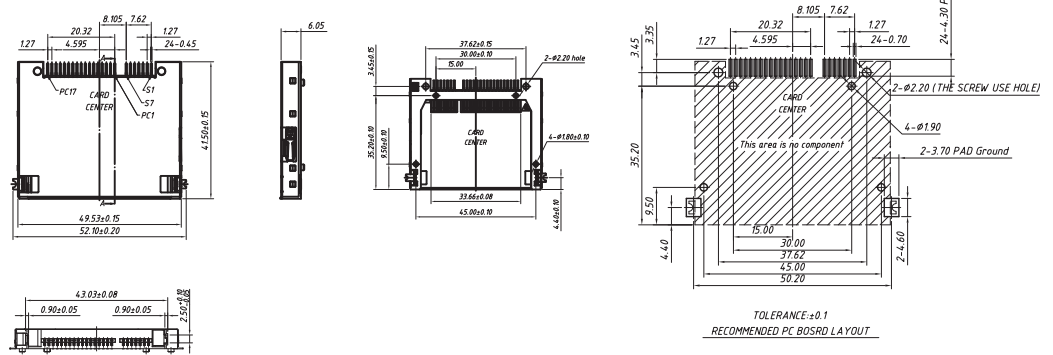
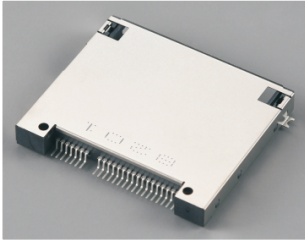
Cfast Host Conn,H6.05,LOCK type



KLS1-CFA-002B

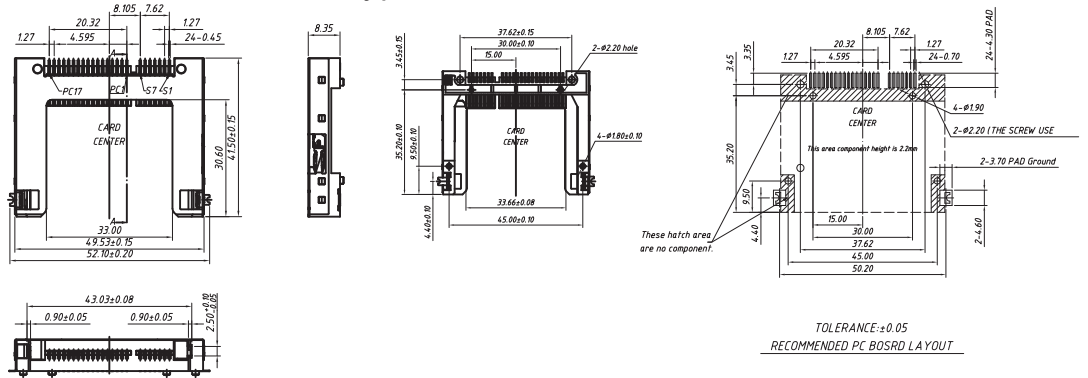
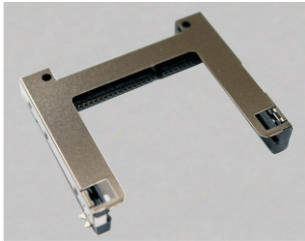


Cfast Host Conn,PUSH/PUSH H6.05



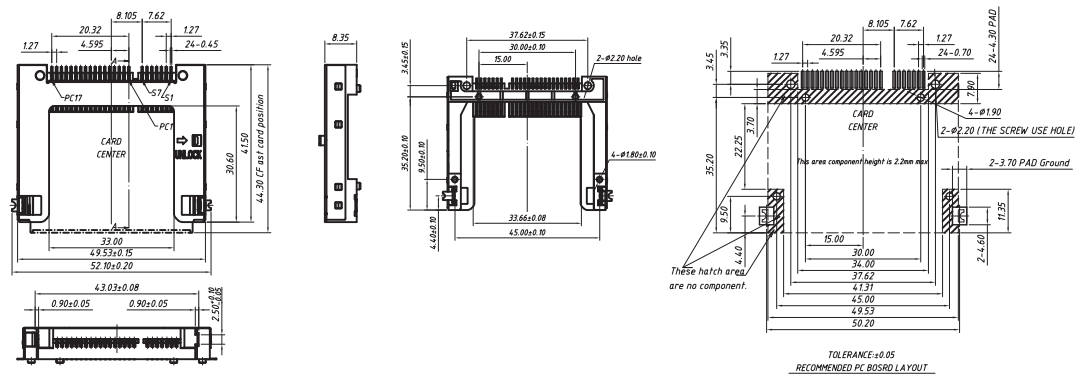
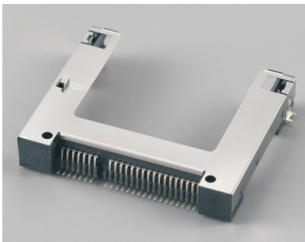
KLS1-CFA-002C

Cfast Host Conn,PUSH/PUSH H8.35,LOCK type



KLS1-CFA-003A

Cfast Host Conn,H8.35,LOCK type



KLS1-CFA-003B



Your Best Components Sourcing

KLS electronic
Aluminum Electronic Capacitors
KLS ELECTRONIC CO., LTD.

www.klsle.com
Email:sales@cnkls.com
Tel:0086-574-86828566

KLS electronic
ANTENNA 5MHz-5.5GHz
NINGBO KLS ELECTRONIC CO., LTD.

www.klsle.com
Email:sales@cnkls.com
Tel:0086-574-86828566

KLS electronic
Acoustic Components
KLS ELECTRONIC CO., LTD.

www.klsle.com
Email:sales@cnkls.com
Tel:0086-574-86828566

KLS electronic
Crystals Oscillators Resonators
NINGBO KLS ELECTRONIC CO.,LTD.

ELECTRONICS
Your Best Components Sourcing

Science And Technology

www.klsle.com
Email:sales@cnkls.com
Tel:0086-574-86828566

KLS electronic
Fans,Motors,Thermal Management
NINGBO KLS ELECTRONIC CO.,LTD.

FAN
Manufacturing

TO BECOME THE FIRST BRAND OF CHINESE
FAN MANUFACTURING

www.klsle.com
Email:sales@cnkls.com
Tel:0086-574-86828566

KLS electronic
WATERPROOF CONNECTOR
CABLE ASSEMBLY
NINGBO KLS ELECTRONIC CO.,LTD.

www.klsle.com
Email:sales@cnkls.com
Tel:0086-574-86828566

KLS electronic
Magnetics - Transformer,Coil,Choke
Inductor Components
KLS ELECTRONIC CO., LTD.

Your Best Electronics Sourcing

www.klsle.com
Email:sales@cnkls.com
Tel:0086-574-86828566

KLS electronic
FPC Connectors
NINGBO KLS ELECTRONIC CO.,LTD.

FPC
FPC / FPC

www.klsle.com
Email:sales@cnkls.com
Tel:0086-574-86828566

KLS ELECTRONIC CO., LTD.

KLS CATALOG
2014.1 WEB2014

www.klsle.com
Email:sales@cnkls.com
Tel:0086-574-86828566

KLS electronic
Ethernet Connector Catalogue
KLS ELECTRONIC CO., LTD.

www.klsle.com
Email:sales@cnkls.com
Tel:0086-574-86828566

KLS electronic
Tantalum Capacitors
Aluminum Electronic Capacitors
Film Capacitor Ceramic Capacitor
KLS ELECTRONIC CO., LTD.

www.klsle.com
Email:sales@cnkls.com
Tel:0086-574-86828566

KLS electronic
Terminal Blocks
NINGBO KLS ELECTRONIC CO.,LTD.

www.klsle.com
Email:sales@cnkls.com
Tel:0086-574-86828566

KLS electronic
Aluminum Electronic Capacitors
KLS ELECTRONIC CO., LTD.

www.klsle.com
Email:sales@cnkls.com
Tel:0086-574-86828566

KLS electronic
Lead Connectors And Accessories
www.klsle.com

KLS ELECTRONIC CO.,LTD.

WWW.CNKLS.COM WWW.KLSELE.COM

KLS ELECTRONIC CO.,LTD.
Tel: 0574-86828566

Email:sales@cnkls.com
Fax:0086 574 86824882



Your Best Components Sourcing

KLS electronic
Aluminum Electronic Capacitors
KLS ELECTRONIC CO., LTD.

www.klsle.com
Email:sales@cnkls.com
Tel:0086-574-86828566

KLS electronic
ANTENNA 5MHz-5.8GHz
NINGBO KLS ELECTRONIC CO., LTD.

www.klsle.com
Email:sales@cnkls.com
Tel:0086-574-86828566

KLS electronic
Acoustic Components
KLS ELECTRONIC CO., LTD.

www.klsle.com
Email:sales@cnkls.com
Tel:0086-574-86828566

KLS electronic
Crystals Oscillators Resonators
NINGBO KLS ELECTRONIC CO.,LTD.

ELECTRONICS
Your Best Components Sourcing

Science And Technology

www.klsle.com
Email:sales@cnkls.com
Tel:0086-574-86828566

KLS electronic
Fans,Motors,Thermal Management
NINGBO KLS ELECTRONIC CO.,LTD.

FAN
Manufacturing

TO BECOME THE FIRST BRAND OF CHINESE
FAN MANUFACTURING

www.klsle.com
Email:sales@cnkls.com
Tel:0086-574-86828566

KLS electronic
WATERPROOF CONNECTOR
CABLE ASSEMBLY
NINGBO KLS ELECTRONIC CO.,LTD.

WWW.KLSELE.COM
Email:sales@cnkls.com
Tel:0086-574-86828566

KLS electronic
Magnetics - Transformer,Coil,Choke
Inductor Components
KLS ELECTRONIC CO., LTD.

Your Best Electronics Sourcing

www.klsle.com
Email:sales@cnkls.com
Tel:0086-574-86828566

KLS electronic
FPC Connectors
NINGBO KLS ELECTRONIC CO.,LTD.

FPC
FPC / FPC

www.klsle.com
Email:sales@cnkls.com
Tel:0086-574-86828566

KLS ELECTRONIC CO., LTD

KLS CATALOG
2014.1 WEB2014

KLS ELECTRONIC CO., LTD. WWW.CNKL.COM WWW.KLSELE.COM
Tel:0086-574-86828566 Fax:0086-574-86824882 Email:sales@cnkls.com

KLS electronic
Ethernet Connector Catalogue
KLS ELECTRONIC CO., LTD.

www.klsle.com
Email:sales@cnkls.com
Tel:0086-574-86828566

KLS electronic
Tantalum Capacitors
Aluminum Electronic Capacitors
Film Capacitor Ceramic Capacitor
KLS ELECTRONIC CO., LTD.

www.klsle.com
Email:sales@cnkls.com
Tel:0086-574-86828566

KLS electronic
Terminal Blocks
NINGBO KLS ELECTRONIC CO.,LTD.

www.klsle.com
Tel:0086-574-86828566
Email:sales@cnkls.com

KLS electronic
Aluminum Electronic Capacitors
KLS ELECTRONIC CO., LTD.

www.klsle.com
Email:sales@cnkls.com
Tel:0086-574-86828566

KLS electronic
Lead Connectors And Accessories
www.klsle.com

KLS ELECTRONIC CO.,LTD.

WWW.CNKL.COM WWW.KLSELE.COM

KLS ELECTRONIC CO.,LTD.
Tel: 0574-86828566

Email:sales@cnkls.com
Fax:0086 574 86824882